

## TECHNICAL DATA SHEET

**DESCRIPTION**

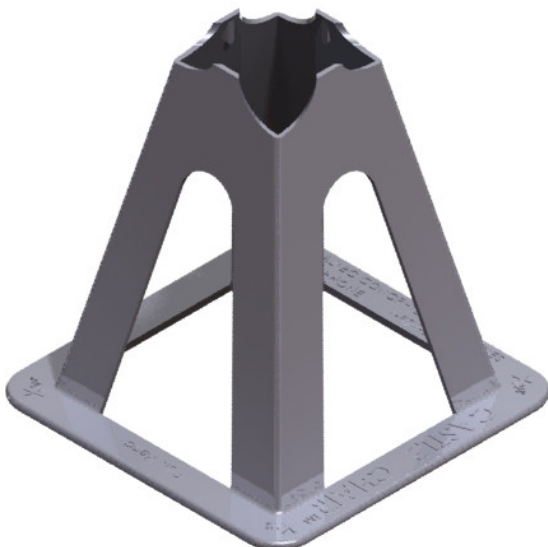
The PCC Aztec<sup>®</sup> Castle Chair is an individual, plastic, bar support used to maintain the elevation of rebar in reinforced concrete. They consist of a cone shaped body, rebar saddles, and a wide base.

**APPLICATION**

The PCC Aztec Castle Chair is used to support one layer of steel a required distance in elevation. It may be used to support steel on soft material form surface, such as carton forms or fill material.

**PRODUCT SPECIFICATION**

- Cover height 1-1/2" to 6-1/4" in 1/4" increments
- Supports on average over 600 lbs. at room temperature

**FEATURES**

- Dual Height Saddles
- Large On-Grade Foot
- Dark Recycled Plastic
- Castle Chairs ranging in sizes 1-1/2" to 4-1/4" tall have a round base.
- Castle Chairs ranging in sizes 4-1/2" to 6-1/4" tall have a square base.

**BENEFITS**

- Withstands jobsite compressive loads without deforming
- Faster fulfillment times
- May contribute to LEED credits
- Less inventory with multiple heights in one

**HOW TO SPECIFY**

Specific:

Rebar Supports should be PCC Aztec<sup>®</sup> Castle Chair rebar supports manufactured by Dayton Superior Corp. and are required to be Made in the US.

Generic:

The rebar supports need to meet building code requirements as required by \_\_\_\_\_ (insert name here). The rebar supports shall be plastic rebar supports manufactured in the USA.

**APPROVALS / COMPLIANCE**

- CRSI
- ACI-50-66
- ACI-315/ 315R

Select sizes of Made in the USA chairs also have the following approvals & compliances:

- LEED
- Department of Transportation, DOT
- American Recovery and Reinvestment Act, ARRA
- Buy America/n Act

**INSTALLATION**

1. Place PCC Aztec Castle Chair on base material orienting the appropriate height saddle with the rebar.
2. Place rebar on corresponding saddle.
3. Wire tie as needed with WTW Premium Tie Wire.

**RELATED PRODUCTS**

- SB Slab Bolsters
- PC110 Rebar Impalement Safety Cap

**TECHNICAL DATA SHEET**
**HOW TO ORDER**

Specify: (1) quantity, (2) name, (3) cover height, (5) requires Made in USA

Example: 500, PCC Aztec<sup>®</sup> Castle Chair, 4" cover, Made in USA required

Please note: When ordering, it is important to notify if your project requires/specifies Made in the USA, BABA, and/or DOT requirements. Additional sizes and materials may be available as Made to Order. Please call for lead times, pricing, and availability.

**ORDERING INFORMATION**
**AZTEC<sup>®</sup> CASTLE CHAIR™ - ROUND BASE - MADE IN USA**

Product Code	Description	Weight
122835	1-1/2" - 1-3/4"	0.079 LB
122837	2-1/2" - 2-3/4"	0.113 LB

**AZTEC<sup>®</sup> CASTLE CHAIR™ - ROUND BASE**

Product Code	Description	Weight
121284	2" - 2-1/4"	0.092 LB
121285	3" - 3-1/4"	0.120 LB

**AZTEC<sup>®</sup> CASTLE CHAIR™ - ROUND BASE - MADE IN USA**

Product Code	Description	Weight
122839	3-1/2" - 3-3/4"	0.151 LB
122840	4" - 4-1/4"	0.190 LB

**AZTEC<sup>®</sup> CASTLE CHAIR™ - SQUARE BASE - MADE IN USA**

Product Code	Description	Weight
123562	4-1/2" - 4-3/4"	0.200 LB
123563	5" - 5-1/4"	0.219 LB
123564	5-1/2" - 5-3/4"	0.232 LB
123565	6" - 6-1/4"	0.251 LB

**MANUFACTURER**

Dayton Superior Corporation  
 1125 Byers Road  
 Miamisburg, OH 45342  
 Customer Service: 888-977-9600  
 Technical Services: 877-266-7732  
 Website: [www.daytonsuperior.com](http://www.daytonsuperior.com)

**WARRANTY (ACCESSORIES)**

Limited Warranty. Dayton warrants, for a period of 60 days from the date of shipment (three years from the date of shipment in the case of formwork, excluding any consumable Products included with such formwork), that Products and any associated application drawings and engineering services provided by Dayton ("Ancillary Services") will be free from defects in material and workmanship and, in the case of custom designed formwork, that the formwork will meet the specifications set forth in the design drawings approved by Dayton and Customer. Any claim under this warranty must be made in writing within such warranty period. If any Product and/or Ancillary Service covered by a timely claim are found to be defective, Dayton will, within a reasonable time, make any necessary repairs or corrections or, at Dayton's option, replace the Product. Unless pre-authorized by Dayton in writing, Dayton will not accept any charges for correcting defects or accept the return of any Product. This warranty will not apply to any Products that have been subjected to misuse, neglect, storage damage, misapplication, accident or any other damage caused by any person other than Dayton, or that have not been maintained in accordance with Dayton's specifications. THIS LIMITED WARRANTY IS IN LIEU OF ALL OTHER WARRANTIES AS TO THE PRODUCTS AND ANCILLARY SERVICES. DAYTON MAKES NO OTHER WARRANTIES OR GUARANTEES, EXPRESS OR IMPLIED, INCLUDING ANY WARRANTY OF MERCHANTABILITY, FITNESS FOR A PARTICULAR PURPOSE OR OTHERWISE. THE REMEDIES SET FORTH IN THIS SECTION ARE CUSTOMER'S EXCLUSIVE REMEDY FOR BREACH OF WARRANTY.