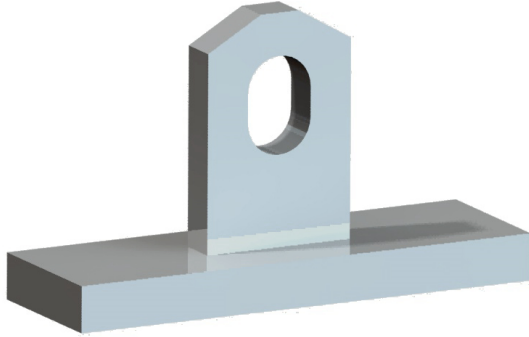


## TECHNICAL DATA SHEET

### DESCRIPTION

The P95P Fleet-Lift Plate Anchor is a high-strength anchor used for back stripping of precast panels.



### FEATURES

- Designed to increase pull-out capacity in concrete.
- Increased safe working load due to wide base design.
- Permits #4 rebar, each 18" in length to easily secure to the insert.
- Available in 2, 4 and 8 ton capacities
- Available in plain or hot dip galvanized finishes.

### RELATED PRODUCTS

- P99 Fleet-Lift Reusable Recess Plug
- P99D Fleet-Lift Disposable Recess Plug
- P99P Fleet Patch
- P99C Fleet-Lift Cast Steel Recess Plug
- P98S Fleet-Lift Shear bar
- P91S Fleet-Lift Ring Clutch

### ORDERING INFORMATION

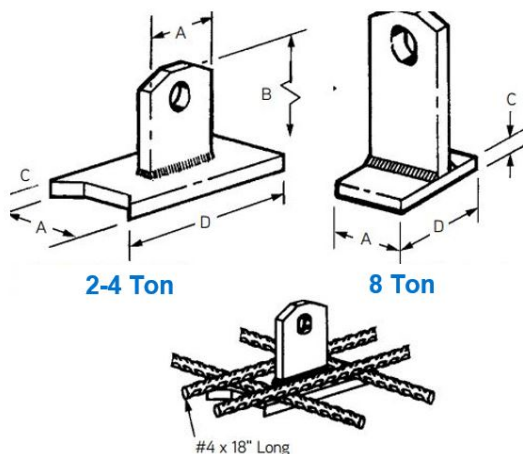
#### FLEET LIFT™ PLATE ANCHOR - MADE IN USA

Product Code	Description	Weight
100524	8 TON 6.38" PLAIN	4.180 LB
100525	8 TON 6.88" PLAIN	4.360 LB
100526	8 TON 10.25" PLAIN	6.140 LB

#### FLEET LIFT™ PLATE ANCHOR - IMPORT

Product Code	Description	Weight
FL128	2 TON 2.25" PLAIN	0.710 LB
FL846	4 TON 3.00" PLAIN	1.420 LB
FL846G	4 TON 3.00" HOT DIPPED GALV.	1.420 LB
FL847	4 TON 3.50" PLAIN	1.550 LB
FL044	4 TON 4.38" PLAIN	1.96 LB
FL043	8 TON 6.88" PLAIN	4.360 LB

### TECHNICAL DATA



### MANUFACTURER

Dayton Superior Corporation  
 1125 Byers Road  
 Miamisburg, OH 45342  
 Customer Service: 888-977-9600  
 Technical Services: 877-266-7732  
 Website: www.daytonsuperior.com

P95P Fleet-Lift Plate Anchor (ton x length)	Precast Concrete Min Panel Thickness	Min Edge or Corner Dist.	Shear Safe Working Load (lbs)	Tension Safe Working Load (lbs)	Shear Safe Working Load Reinforced (lbs)	Safe Working Load Reinforced (lbs)	A	B	C	D
2-ton x 2-1/4" long	3-3/8"	4-1/2"	950 lbs.	950 lbs.	4,000 lbs.	4,000 lbs.	1-1/4"	2-1/4"	3/8"	4"
4-ton x 3" long	4-5/8"	5"	3,575 lbs.	3,575 lbs.	6,000 lbs.	6,000 lbs.	1-1/2"	3"	5/8"	3-3/8"
4-ton x 3-1/2" long	4-5/8"	7"	4,700 lbs.	4,700 lbs.	7,000 lbs.	7,000 lbs.	1-1/2"	3-1/2"	5/8"	3-3/8"
4-ton x 4-3/8" long	5-5/8"	8"	4,725 lbs.	4,725 lbs.	8,000 lbs.	8,000 lbs.	1-1/2"	4-3/8"	5/8"	4"
8-ton x 6-3/8" long	7-3/4"	12-5/8"	9,750 lbs.	9,750 lbs.	9,750 lbs.	9,750 lbs.	2-1/2"	6-3/8"	3/4"	3"
8-ton x 6-7/8" long	8-1/4"	13-5/8"	10,850 lbs.	10,850 lbs.	11,750 lbs.	11,750 lbs.	2-1/2"	6-7/8"	3/4"	3"
8-ton x 10-1/4" long	11-5/8"	20-1/4"	12,000 lbs.	12,000 lbs.	12,000 lbs.	12,000 lbs.	2-1/2"	10-1/4"	3/4"	3"

Safe Working Load provides an approximate factor of safety of 4 to 1 in 3,500 psi normal weight concrete.

**TECHNICAL DATA SHEET****WARRANTY (ACCESSORIES)**

Limited Warranty. Dayton warrants, for a period of 60 days from the date of shipment (three years from the date of shipment in the case of formwork, excluding any consumable Products included with such formwork), that Products and any associated application drawings and engineering services provided by Dayton ("Ancillary Services") will be free from defects in material and workmanship and, in the case of custom designed formwork, that the formwork will meet the specifications set forth in the design drawings approved by Dayton and Customer. Any claim under this warranty must be made in writing within such warranty period. If any Product and/or Ancillary Service covered by a timely claim are found to be defective, Dayton will, within a reasonable time, make any necessary repairs or corrections or, at Dayton's option, replace the Product. Unless pre-authorized by Dayton in writing, Dayton will not accept any charges for correcting defects or accept the return of any Product. This warranty will not apply to any Products that have been subjected to misuse, neglect, storage damage, misapplication, accident or any other damage caused by any person other than Dayton, or that have not been maintained in accordance with Dayton's specifications. THIS LIMITED WARRANTY IS IN LIEU OF ALL OTHER WARRANTIES AS TO THE PRODUCTS AND ANCILLARY SERVICES. DAYTON MAKES NO OTHER WARRANTIES OR GUARANTEES, EXPRESS OR IMPLIED, INCLUDING ANY WARRANTY OF MERCHANTABILITY, FITNESS FOR A PARTICULAR PURPOSE OR OTHERWISE. THE REMEDIES SET FORTH IN THIS SECTION ARE CUSTOMER'S EXCLUSIVE REMEDY FOR BREACH OF WARRANTY.