

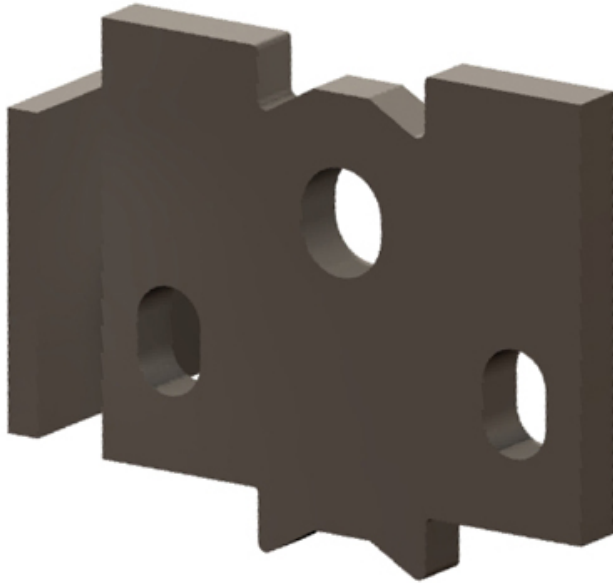
**TECHNICAL DATA SHEET**

**DESCRIPTION**

The P92SP Fleet-Lift™ Sandwich Panel Erection Anchor with Shear Plate is designed to erect precast, insulated sandwich panels with a minimum loss of insulation. The anchor uses standard Fleet-Lift recess plugs and ring clutches.

It is designed for use with 2", 3" and 4" thick insulated sandwich panels. The design of the anchor allows it to distribute anchor loads evenly to both concrete wythes. This is accomplished by the use of two specially bent rebars per sandwich panel anchor.

The sandwich panel erection anchor, with its unique anchor head shape, in combination with the two bent rebars, transfers both the anchor's shear and tension loads evenly into each of the concrete wythes.



**FEATURES**

- Similar in design and action to the P92S anchor, and has a built-in shear plate.
- The shear plate improves shear capacity when used in the 2", 3" and 4" thick wythes
- Available in plain or hot-dipped galvanized finish.

**TECHNICAL DATA**

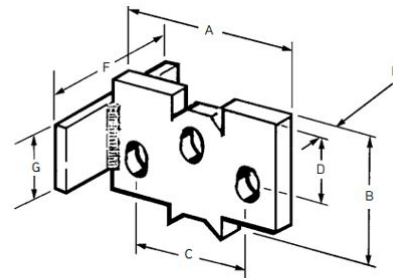
Fleet-Lift Sandwich Panel Erection Anchor - Safe Working Loads  
Minimum edge distance is 2'-0".  
Must use proper tension bar to achieve loads.

Anchor Tonnage	Concrete Compressive Strength	Insulated Panel Thickness 4:1 SF	Shear Parallel to Thickness 4:1 SF	Shear Parallel to Thickness 2.66:1 SF	Shear Perpendicular to Thickness 4:1 SF	Tension
8-ton	4,500 psi	4" x 2" x 2"	4,600 lbs	6,915 lbs	9,870 lbs	16,000 lbs
8-ton	4,500 psi	3" x 2" x 3"	4,400 lbs	6,915 lbs	8,800 lbs	16,000 lbs
10-ton	4,500 psi	3" x 3" x 3"	4,700 lbs	7,065 lbs	10,900 lbs	20,000 lbs
10-ton	4,500 psi	3" x 4" x 3"	4,400 lbs	6,615 lbs	9,200 lbs	20,000 lbs

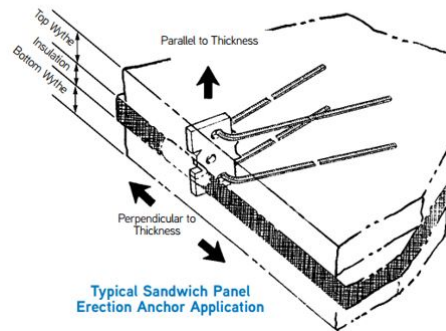
**INSTALLATION**

1. Place one bent rebar through the anchor's top hole and the second rebar through the anchor's bottom hole. The rebar extend from the anchor into the top and bottom wythe of concrete. The two specially bent rebar must be used with the sandwich panel erection anchor to achieve the safe working loads shown.

**INSTALLATION**



P92SP Sandwich Panel Erection Anchor with Shear Plate



Typical Sandwich Panel Erection Anchor Application

TECHNICAL DATA SHEET

**ORDERING INFORMATION**

**FLEET LIFT™ SANDWICH PANEL ERECTION ANCHOR - WITH SHEAR PLATE**

Product Code	Description	Weight
FL284	8 TON 6.00" PLAIN	6.89 LB
FL284G	8 TON 6.00" HOT DIPPED GALV.	6.89 LB
145569	10 TON 7.00" HOT DIPPED GALV.	9.00 LB
145570	10 TON 8.00" HOT DIPPED GALV.	9.40 LB

**MANUFACTURER**

Dayton Superior Corporation  
 1125 Byers Road  
 Miamisburg, OH 45342  
 Customer Service: 888-977-9600  
 Technical Services: 877-266-7732  
 Website: www.daytonsuperior.com

**WARRANTY (ACCESSORIES)**

Limited Warranty. Dayton warrants, for a period of 60 days from the date of shipment (three years from the date of shipment in the case of formwork, excluding any consumable Products included with such formwork), that Products and any associated application drawings and engineering services provided by Dayton ("Ancillary Services") will be free from defects in material and workmanship and, in the case of custom designed formwork, that the formwork will meet the specifications set forth in the design drawings approved by Dayton and Customer. Any claim under this warranty must be made in writing within such warranty period. If any Product and/or Ancillary Service covered by a timely claim are found to be defective, Dayton will, within a reasonable time, make any necessary repairs or corrections or, at Dayton's option, replace the Product. Unless pre-authorized by Dayton in writing, Dayton will not accept any charges for correcting defects or accept the return of any Product. This warranty will not apply to any Products that have been subjected to misuse, neglect, storage damage, misapplication, accident or any other damage caused by any person other than Dayton, or that have not been maintained in accordance with Dayton's specifications. THIS LIMITED WARRANTY IS IN LIEU OF ALL OTHER WARRANTIES AS TO THE PRODUCTS AND ANCILLARY SERVICES. DAYTON MAKES NO OTHER WARRANTIES OR GUARANTEES, EXPRESS OR IMPLIED, INCLUDING ANY WARRANTY OF MERCHANTABILITY, FITNESS FOR A PARTICULAR PURPOSE OR OTHERWISE. THE REMEDIES SET FORTH IN THIS SECTION ARE CUSTOMER'S EXCLUSIVE REMEDY FOR BREACH OF WARRANTY.