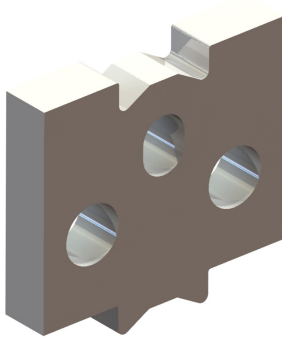


TECHNICAL DATA SHEET

APPLICATION

The Fleet-Lift Sandwich Panel Erection Anchor is designed to erect precast, insulated sandwich panels with a minimum loss of insulation. The sandwich panel erection anchor, with its unique anchor head shape, in combination with the two bent rebars and shear bar, transfers both the anchor's shear and tension loads evenly into each of the concrete wythes.



FEATURES

- Available in plain and hot dip galvanized finishes
- The anchor uses standard Fleet-Lift recess plugs and ring clutches.
- Designed for use with 2", 3" and 4" thick insulated sandwich panels
- The design of the anchor allows it to distribute anchor loads evenly to both concrete wythes using two rebars per sandwich panel anchor.
- Shear bar is required to transfer shear loads

TECHNICAL DATA

4-ton anchor uses #4 x 34" Grade 60 tension bar
 8-ton anchor uses #5 x 42" Grade 60 tension bar
 10-ton tension bar uses #6 x 66" Grade 60 tension bar.

Note: Use the P92T Tension Bar in Tension Conditions.

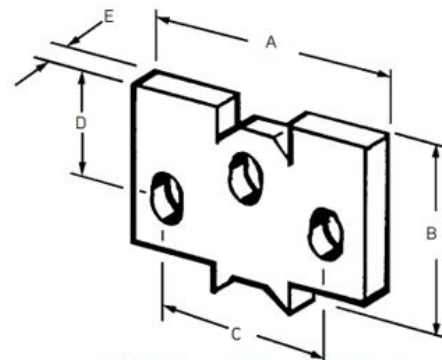
TECHNICAL DATA CHART

Anchor Tonnage	Concrete Compressive Strength	Insulated Panel Thickness	Shear Parallel to Thick. 4:1 SF	Shear Parallel to Thick. 2.66:1SF	Shear Perpendicular to Thick. 4:1 SF	Tension
4-ton	4,500 psi	2"x2"x4"	3,300 lbs	4,960 lbs	8,000 lbs	8,000 lbs
4-ton	3,500 psi	3"x2"x3"	3,425 lbs	5,150 lbs	8,000 lbs	8,000 lbs
8-ton	4,500 psi	3"x2"x3"	3,850 lbs	5,785 lbs	9,900 lbs	16,000 lbs
8-ton	4,500 psi	2"x2"x4"	3,450 lbs	5,185 lbs	10,500 lbs	16,000 lbs

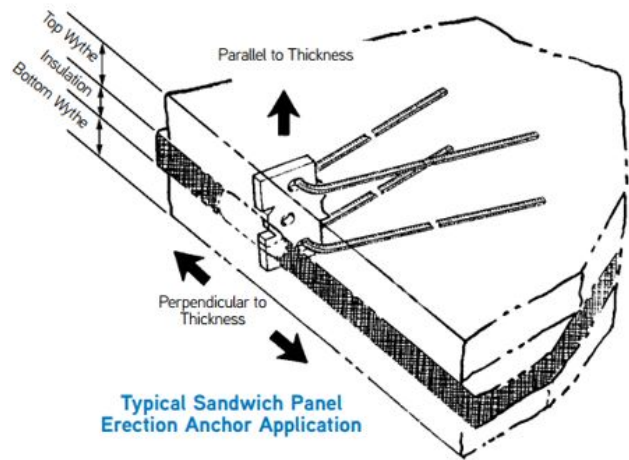
INSTALLATION

1. Place one P92T bent rebar through the anchor's top hole and the second rebar through the anchor's bottom hole.
2. Place the rebar extend from the anchor into the top and bottom wythe of concrete.
3. The two specially bent rebar must be used with the sandwich panel erection anchor to achieve the safe working loads shown.

INSTALLATION



P92S Fleet-Lift Sandwich Panel Erection Anchor



Typical Sandwich Panel Erection Anchor Application

TECHNICAL DATA SHEET

RELATED PRODUCTS

- P92T Tension Bars
- P92S Shear Bars
- P91S Fleet-Lift Ring Clutch
- P99 Fleet-Lift Reusable Recess Plug

ORDERING INFORMATION

FLEET LIFT™ SANDWICH PANEL ERECTION ANCHOR

Product Code	Description	Weight
FL217	4 TON 4.00" PLAIN	2.02 LB
FL077	4 TON 6.00" PLAIN	3.17 LB
FL077E	4 TON 6.00" EPOXY	3.17 LB
143021	4/6 TON 4.00" PLAIN	5.30 LB
FL184	8 TON 6.00" PLAIN	5.35 LB
FL184G	8 TON 6.00" HDGALV	5.40 LB
100053	10 TON 7.0" PLAIN	10.00 LB

MANUFACTURER

Dayton Superior Corporation
 1125 Byers Road
 Miamisburg, OH 45342
 Customer Service: 888-977-9600
 Technical Services: 877-266-7732
 Website: www.daytonsuperior.com

WARRANTY (ACCESSORIES)

Limited Warranty. Dayton warrants, for a period of 60 days from the date of shipment (three years from the date of shipment in the case of formwork, excluding any consumable Products included with such formwork), that Products and any associated application drawings and engineering services provided by Dayton ("Ancillary Services") will be free from defects in material and workmanship and, in the case of custom designed formwork, that the formwork will meet the specifications set forth in the design drawings approved by Dayton and Customer. Any claim under this warranty must be made in writing within such warranty period. If any Product and/or Ancillary Service covered by a timely claim are found to be defective, Dayton will, within a reasonable time, make any necessary repairs or corrections or, at Dayton's option, replace the Product. Unless pre-authorized by Dayton in writing, Dayton will not accept any charges for correcting defects or accept the return of any Product. This warranty will not apply to any Products that have been subjected to misuse, neglect, storage damage, misapplication, accident or any other damage caused by any person other than Dayton, or that have not been maintained in accordance with Dayton's specifications. THIS LIMITED WARRANTY IS IN LIEU OF ALL OTHER WARRANTIES AS TO THE PRODUCTS AND ANCILLARY SERVICES. DAYTON MAKES NO OTHER WARRANTIES OR GUARANTEES, EXPRESS OR IMPLIED, INCLUDING ANY WARRANTY OF MERCHANTABILITY, FITNESS FOR A PARTICULAR PURPOSE OR OTHERWISE. THE REMEDIES SET FORTH IN THIS SECTION ARE CUSTOMER'S EXCLUSIVE REMEDY FOR BREACH OF WARRANTY.