

TECHNICAL DATA

DESCRIPTION

The Max-A-Form STS forming system is the Industry leader in rentable, self-spanning, steel formwork. Its superior pour pressure and moment capacities result in labor and material savings for the end user. The all-steel, welded frame make it the ideal choice for gang forming tall structural walls, pouring tieless columns, or for supporting concrete over long spans without shoring or custom equipment.

300K ANCHOR SUPPORT BRACKETS

Anchor Brackets are available in several configurations to meet specific concrete forming requirements.

Anchor Brackets come in 12, 25, 40, 70, 140-, and 300-KIP capacities. They provide heavy duty capability for concentrated loading applications.

300K SCREW/SAND JACKS

High-capacity screw jacks allow height adjustments. Multiple -hole positioning provides support for overhanging pier caps

300K IMBEDS

The Symons® Max-A-Form® STS 300K Imbed are installed in the supporting concrete before it's poured. An imbed acts as a sleeve or guide for the Thru Bolts.

300K SPREADER BEAMS

Although the anchor brackets can support 70K, 140K, and 300K respectively, the Max-A-Form STS panel cannot transfer those loads without the use of Spreader Beams. If the load to be transferred from the panel to the bracket exceeds 25,000 pounds, then a spreader beam may be required.

BEAM BRACES

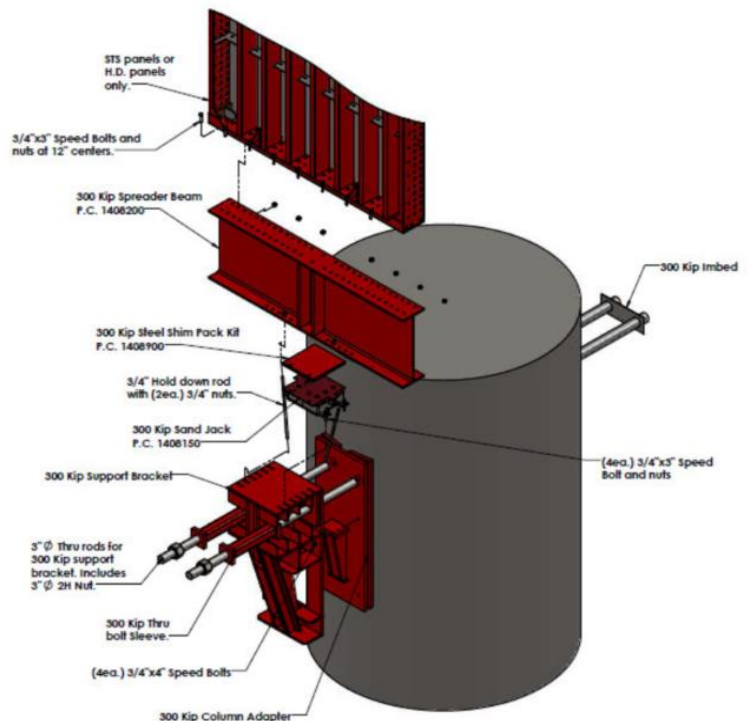
A 300K Beam Brace is to be used at either end of the Spreader Beams for added stability. It attaches with ¾" bolts and nuts. Spreader Beams must be bolted to panels and tied down to anchor brackets

Note: 300 KIP denotes the allowable capacity at a 2:1 Factor of Safety

Part#: F1408000

Description: 300K Anchor Support Bracket

Weight: 1,610 lbs.



300K Anchor Support Bracket

| Nominal Thru Bolt Diameter (in) | Imbed Setback (in) | Imbed Diameter (in) | Thru Bolts Spacing (in) | With 4,000 psi Concrete | | | |
|---------------------------------|--------------------|---------------------|-------------------------|-------------------------|----------------------|----------------------------|------------------------------|
| | | | | Total Shear (lbs.) | Total Tension (lbs.) | Shear Per Thru Bolt (lbs.) | Tension Per Thru Bolt (lbs.) |
| 3 | 2 | 3.75 | 14 | 300,000 | 80,000 | 150,000 | 40,000 |

Minimum edge distance is 12" please contact our engineering department if there is a smaller edge distance

300 KIP PRODUCT I.D. CHART



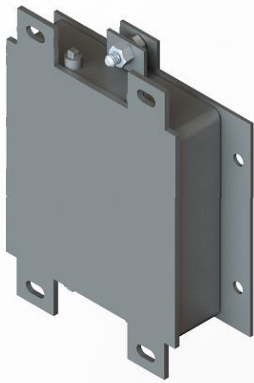
Part#: F1408300
Description: 300K Column Adapter (9'-11')
Weight: 1,263.20 lbs.



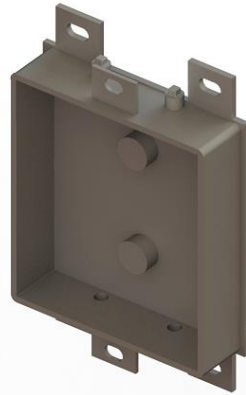
Part#: F1408310
Description: 300K Column Adapter (7'-9')
Weight: 1,270 lbs.



Part#: F1408320
Description: 300K Column Adapter (6'-7')
Weight: 1,276.80 lbs.



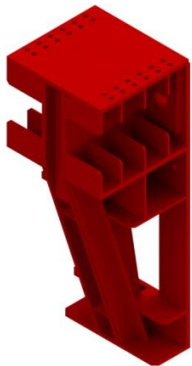
Part#: F1408150
Description: 300K Sand Jack Assembly
Weight: 187.20



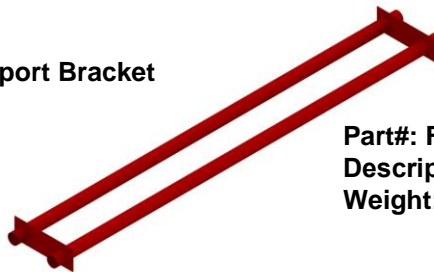
Part#: F1408100
Description: 300K Sand Jack (Bottom)
Weight: 47.10 lbs.



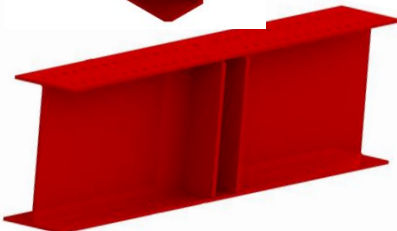
Part#: F1408105
Description: 300K Sand Jack (Top)
Weight: 139.70



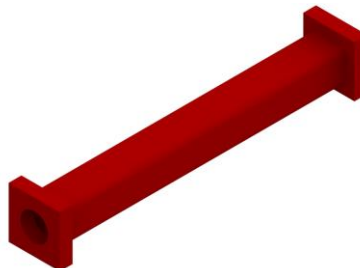
Part#: F1408000
Description: 300K Support Bracket
Weight: 1,610 lbs.



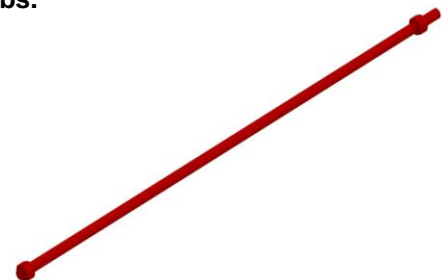
Part#: F1408910
Description: 12' Length - 300K Imbed
Weight: 72 lbs.



Part#: F1408200
Description: 300K Spreader Beam
Weight: 951.10 lbs.



Part#: F1408430
Description: 300K Thru Bolt Sleeve x 3'
Weight: 69.90 lbs.



Part#: F1408520
Description: 3" DIA Thru Bolt x 14'
Weight: 352.30 lbs.