

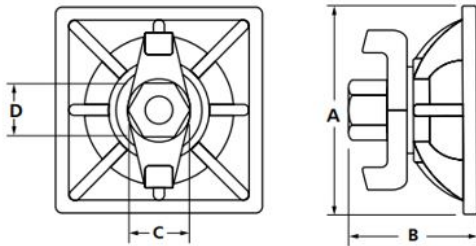
TECHNICAL DATA SHEET

DESCRIPTION

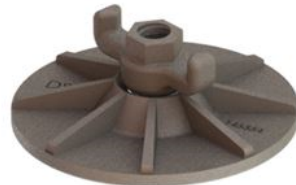
B12ASW D/R Thread Bar Accessories are high strength steel, fast-acting contour thread accessories.

APPLICATION

B12ASW D/R Thread Bar Accessories are used with the Euro Bar, D/R Thread Bar, D9A D/R Thread Taper Tie or D30A D/R Thread She-Bolts for securing and spacing clamp type forms.



B12ASW Square



B12ASW Round



B12ASW Rectangle

FEATURES

- Available in sizes 15mm, 20mm and 32mm
- Available with 2-1/2 threads per inch
- Features a heavy duty ribbed washer base in one assembly to reduce the number of working parts
- Made from high strength malleable iron
- Safe Working Load provides a factor of safety of approximately 2 to 1
- Made with electrogalvanized finish per ASTM B633 SC1 Type II

TECHNICAL DATA

Thread Size	Washer Type	A	B	C	D	SWL (lbs/ea)
15mm (5/8")	Square	4-11/16"	2-3/8"	1-3/8"	1-3/16"	21,900
20mm (7/8")	Square	4-11/16"	2-3/8"	1-5/8"	1-7/16"	39,200
20mm (7/8")	Round	7"	2.47"	1-5/8"	1.24"	32,500
32mm (1-1/4")	Rectangular	5" x 7"	3.25"	--	--	64,000

RELATED PRODUCTS

- B12AD Euro Bar
- B12A D/R Thread Bar
- B30A D/R Thread She-Bolt
- D9A D/R Thread Taper Tie

HOW TO ORDER

Specify: (1) quantity, (2) name.

Example: 200 pcs. B12ASW D/R Swivel Wing Nut.

ORDERING INFORMATION

D/R THREAD BAR ACCESSORIES

Product Code	Description	Weight
122021	15MM B12ASW SWIVEL WING NUT - SQUARE PLATE; SWL=21,900 LBS - 97.4 KN	3.11 LB
123606	20MM B12ASW SWIVEL WING NUT - SQUARE PLATE; SWL=39,200 LBS - 174.4 KN	3.00 LB
145554	20MM B12ASW SWIVEL WING NUT - ROUND PLATE; SWL=32,500 LBS - 144.6 KN	5.94 LB
145181	32MM B12ASW SWIVEL WING NUT - 5 X 7 RECTANGULAR PLATE; SWL=64,000 LBS - 144.6 KN	7.09 LB

MANUFACTURER

Dayton Superior Corporation
 1125 Byers Road
 Miamisburg, OH 45342
 Customer Service: 888-977-9600
 Technical Services: 877-266-7732
 Website: www.daytonsuperior.com

TECHNICAL DATA SHEET

WARRANTY (ACCESSORIES)

Limited Warranty. Dayton warrants, for a period of 60 days from the date of shipment (three years from the date of shipment in the case of formwork, excluding any consumable Products included with such formwork), that Products and any associated application drawings and engineering services provided by Dayton ("Ancillary Services") will be free from defects in material and workmanship and, in the case of custom designed formwork, that the formwork will meet the specifications set forth in the design drawings approved by Dayton and Customer. Any claim under this warranty must be made in writing within such warranty period. If any Product and/or Ancillary Service covered by a timely claim are found to be defective, Dayton will, within a reasonable time, make any necessary repairs or corrections or, at Dayton's option, replace the Product. Unless pre-authorized by Dayton in writing, Dayton will not accept any charges for correcting defects or accept the return of any Product. This warranty will not apply to any Products that have been subjected to misuse, neglect, storage damage, misapplication, accident or any other damage caused by any person other than Dayton, or that have not been maintained in accordance with Dayton's specifications. THIS LIMITED WARRANTY IS IN LIEU OF ALL OTHER WARRANTIES AS TO THE PRODUCTS AND ANCILLARY SERVICES. DAYTON MAKES NO OTHER WARRANTIES OR GUARANTEES, EXPRESS OR IMPLIED, INCLUDING ANY WARRANTY OF MERCHANTABILITY, FITNESS FOR A PARTICULAR PURPOSE OR OTHERWISE. THE REMEDIES SET FORTH IN THIS SECTION ARE CUSTOMER'S EXCLUSIVE REMEDY FOR BREACH OF WARRANTY.