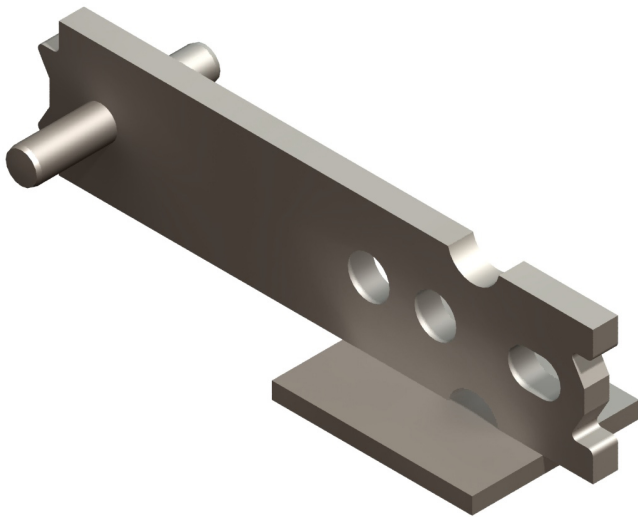


## TECHNICAL DATA SHEET

### DESCRIPTION

The P92P Fleet-Lift Erection Anchor with Shear Plate is designed specifically for edge tilting precast concrete elements from the horizontal to a vertical position. An integral shear plate eliminates any possibility of forgetting to install a required shear bar. As on other Fleet-Lift Erection Anchors, two steel protrusions or “ears” at the head of the anchor provide protection against concrete spalling. These “ears” restrict the ring clutch rotation during lateral pulls. As a result, lateral forces are transmitted directly to the edge of the anchor instead of the concrete.



### FEATURES

- The body of the erection anchor is shaped to allow full reinforcement for secure support and spall-free rotation.
- P92P Erection Anchors are available plain or hot-dipped galvanized

### TECHNICAL DATA

| P92 Fleet-Lift Erection Anchor (ton x length) | A      | B      | C      | D    | Precast Concrete Panel Thickness | SWL w/ Shear Plate (lbs) | Tension SWL w/ Anchor Only (lbs) | Tension SWL w/ Tension Bar Only (lbs) |    |      |        |       |       |       |
|---|--------|--------|--------|------|----------------------------------|--------------------------|----------------------------------|---------------------------------------|----|------|--------|-------|-------|-------|
| 2-ton x 8" long                               | 2-1/2" | 3/4"   | 3"     | 1/4" | 3-1/2" Min                       | 1,450                    | 2,575                            | 4,000                                 |    |      |        |       |       |       |
|   |        |        |        |      | 4"                               | 1,625                    | 2,575                            |                                       |    |      |        |       |       |       |
|   |        |        |        |      | 5"                               | 2,050                    | 3,350                            |                                       |    |      |        |       |       |       |
|   |        |        |        |      | 6"                               | 2,350                    | 3,750                            |                                       |    |      |        |       |       |       |
|   |        |        |        |      | 7"                               | 2,625                    | 3,850                            |                                       |    |      |        |       |       |       |
|   |        |        |        |      | 8"                               | 2,850                    | 4,000                            |                                       |    |      |        |       |       |       |
|   |        |        |        |      | 9"                               | 3,050                    | 4,000                            |                                       |    |      |        |       |       |       |
|   |        |        |        |      | 10"                              | 3,225                    | 4,000                            |                                       |    |      |        |       |       |       |
|   |        |        |        |      | 11"                              | 3,425                    | 4,000                            |                                       |    |      |        |       |       |       |
|   |        |        |        |      | 12"                              | 3,675                    | 4,000                            |                                       |    |      |        |       |       |       |
|   |        |        |        |      | 4-ton x 10-7/16" long            | 2-1/2"                   | 1-1/4"                           |                                       | 3" | 3/8" | 4" Min | 2,150 | 3,450 | 8,000 |
|   |        |        |        |      |                                  |                          |                                  |                                       |    |      | 5"     | 2,625 | 4,250 |       |
| 6"  | 3,100  | 5,075  |        |      |                                  |                          |                                  |                                       |    |      |        |       |       |       |
| 7"  | 3,525  | 5,825  |        |      |                                  |                          |                                  |                                       |    |      |        |       |       |       |
| 8"  | 3,925  | 6,600  |        |      |                                  |                          |                                  |                                       |    |      |        |       |       |       |
| 9"  | 4,275  | 7,350  |        |      |                                  |                          |                                  |                                       |    |      |        |       |       |       |
| 10"   | 4,600  | 8,000  |        |      |                                  |                          |                                  |                                       |    |      |        |       |       |       |
| 11"   | 4,900  | 8,000  |        |      |                                  |                          |                                  |                                       |    |      |        |       |       |       |
| 12"   | 5,150  | 8,000  |        |      |                                  |                          |                                  |                                       |    |      |        |       |       |       |
| 8-ton x 13-1/4" long                          | 3"     | 1-5/8" | 3-1/2" | 3/8" | 6" Min                           | 4,000                    | 5,580                            | 16,000                                |    |      |        |       |       |       |
|   |        |        |        |      | 7"                               | 4,250                    | 6,870                            |                                       |    |      |        |       |       |       |
|   |        |        |        |      | 8"                               | 4,475                    | 7,775                            |                                       |    |      |        |       |       |       |
|   |        |        |        |      | 9"                               | 4,725                    | 8,300                            |                                       |    |      |        |       |       |       |
|   |        |        |        |      | 10"                              | 4,950                    | 8,800                            |                                       |    |      |        |       |       |       |
|   |        |        |        |      | 11"                              | 5,200                    | 10,000                           |                                       |    |      |        |       |       |       |
|   |        |        |        |      | 12"                              | 5,450                    | 11,300                           |                                       |    |      |        |       |       |       |

Notes: 1. SWL provides an approximate factor of safety of 4 to 1 in 3,500 psi normal weight concrete.  
2. FL449 uses 8-10T P99 Recess and P91 Ring Clutch

### INSTALLATION

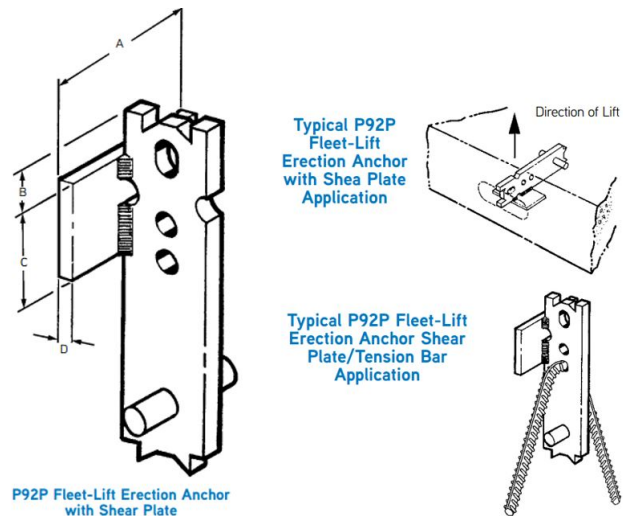
#### 1. Shear Reinforcement

Stress is caused during the edge lifting of a precast panel, making supplemental reinforcement around the anchor necessary in thin panels. The Fleet-Lift P92P Erection Anchor with integral Shear Plate is designed expressly for this purpose. Install the anchor so that the shear plate is opposite the direction of lift.

#### Tension Reinforcement

The P92P with Shear Plate Fleet-Lift Erection Anchor is manufactured with a steel tension pin that resists pullout during normal erection situations. The safe working load chart on the following page lists two sets of tension values. If the higher safe working load is used, the anchor must be properly reinforced using the P98T Tension Bar. The tension bar should be placed through the lower hole.

### INSTALLATION



### ORDERING INFORMATION

#### FLEET LIFT™ ERECTION ANCHOR WITH SHEAR PLATE -

##### MADE IN USA

| Product Code | Description                                | Weight  |
|--------------|--|---------|
| 144904       | 2 TON 8.38" PLAIN (MADE IN USA)            | 2.25 LB |
| 144050       | 2 TON 8.38" HOT DIPPED GALV. (MADE IN USA) | 2.30 LB |

#### FLEET LIFT™ ERECTION ANCHOR WITH SHEAR PLATE -

##### IMPORT

| Product Code | Description                   | Weight   |
|--------------|-------------------------------|----------|
| FL147        | 2 TON 8.38" PLAIN             | 2.25 LB  |
| FL148        | 4 TON 10.88" PLAIN            | 5.41 LB  |
| FL149        | 8 TON 13.25" PLAIN            | 10.50 LB |
| FL147G       | 2 TON 8.38" HOT DIPPED GALV.  | 1.30 LB  |
| FL148G       | 4 TON 10.88" HOT DIPPED GALV. | 5.60 LB  |
| FL149G       | 8 TON 13.25" HOT DIPPED GALV. | 10.60 LB |

TECHNICAL DATA SHEET

**MANUFACTURER**

Dayton Superior Corporation  
1125 Byers Road  
Miamisburg, OH 45342  
Customer Service: 888-977-9600  
Technical Services: 877-266-7732  
Website: www.daytonsuperior.com

**WARRANTY (ACCESSORIES)**

Limited Warranty. Dayton warrants, for a period of 60 days from the date of shipment (three years from the date of shipment in the case of formwork, excluding any consumable Products included with such formwork), that Products and any associated application drawings and engineering services provided by Dayton ("Ancillary Services") will be free from defects in material and workmanship and, in the case of custom designed formwork, that the formwork will meet the specifications set forth in the design drawings approved by Dayton and Customer. Any claim under this warranty must be made in writing within such warranty period. If any Product and/or Ancillary Service covered by a timely claim are found to be defective, Dayton will, within a reasonable time, make any necessary repairs or corrections or, at Dayton's option, replace the Product. Unless pre-authorized by Dayton in writing, Dayton will not accept any charges for correcting defects or accept the return of any Product. This warranty will not apply to any Products that have been subjected to misuse, neglect, storage damage, misapplication, accident or any other damage caused by any person other than Dayton, or that have not been maintained in accordance with Dayton's specifications. THIS LIMITED WARRANTY IS IN LIEU OF ALL OTHER WARRANTIES AS TO THE PRODUCTS AND ANCILLARY SERVICES. DAYTON MAKES NO OTHER WARRANTIES OR GUARANTEES, EXPRESS OR IMPLIED, INCLUDING ANY WARRANTY OF MERCHANTABILITY, FITNESS FOR A PARTICULAR PURPOSE OR OTHERWISE. THE REMEDIES SET FORTH IN THIS SECTION ARE CUSTOMER'S EXCLUSIVE REMEDY FOR BREACH OF WARRANTY.