

## TECHNICAL DATA SHEET

### DESCRIPTION

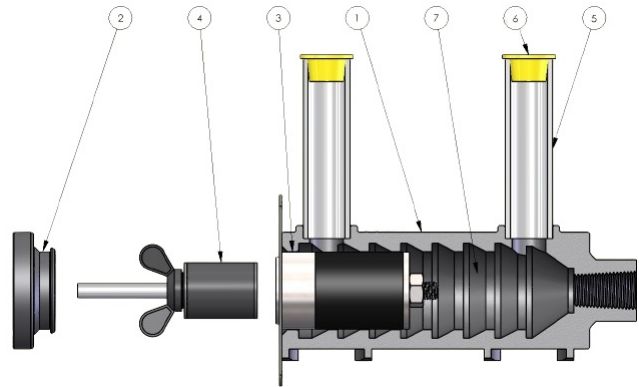
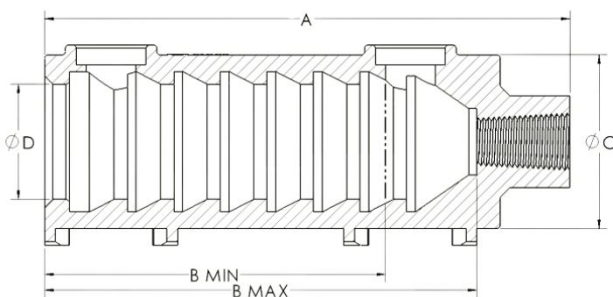
The D390 Taper-Lock Grout Sleeve is a combination of the D310 Taper-Lock Standard Coupler and the D410 Sleeve-Lock Grout Sleeve. This coupler is a Type 2 rebar coupler for up to grade 600W rebar. This product is a high-strength ductile iron coupler containing internal tapered female threads on one end and a grout cavity with an alignment aide cone on the other.

### APPLICATION

The D390 Taper-Lock Grout Sleeve is used to mechanically splice two pieces of rebar in a variety of applications. Typically used to structurally connect precast elements, the D390 is installed at the precast plant in a structural concrete element then filled with a cementitious grout and adjoining rebar on-site to complete the connection. The D390 can also be used on cast-in-place jobs to help eliminate pour strips during construction. The connection develops a splice strength equal to the ultimate strength of the rebar associated.

### PRODUCT SPECIFICATION

- Rebar sizes 10M through 55M
- For use with Grade 400W, 500W & 600W rebar
- Smaller rebar can be installed in grout cavity as needed for transitions
- Transition threads available under special order, contact for more details



Item #	Type	Description	Included	Order Separately	Obtain Locally
1	D390	Taper-Lock Grout Sleeve	X		
2	D487	Field End Seal Plug		X	
3	D491	Formsaver		X	
4	D491	Sleeve-Lock <sup>®</sup> Form Plug		X	
5	D492	Sleeve-Lock <sup>®</sup> 3/4" SCH40 PVC		X	X
6	D493	Sleeve-Lock <sup>®</sup> Port Plug		X	
7	D490	High-Strength Splicing Grout		X	

Figure 1 D390 Taper-Lock Grout Sleeve Components & Availability

### FEATURES

- High Strength Ductile Iron
- Couples all rebar sizes
- Oversized cavity allows for greater field tolerance
- Taper-Lock Type 2 tapered thread
- Standardized port size designed to accept 3/4" SCH40 PVC
- Integral stacking feet stabilize product and assist in wire-tying, acting as a platform for rebar chair

### BENEFITS

- Versatile to meet project needs
- Forgiving grouted connection allows for misaligned and reduced embedment bars.
- Complies with most building codes and jobsite specifications

### HOW TO SPECIFY

#### Specific:

Mechanical connections shall be D390 Taper-Lock Grout Sleeve is manufactured by Dayton Superior Corp.

#### Generic:

The mechanical connection shall meet building code requirements of developing in tension and compression as required by \_\_\_\_\_ (insert name here). The mechanical connections shall be a hybrid connection of the positive locking, type 2 taper thread & a grouted rebar connection. The bar ends must be taper threaded using the manufacturer's bar threading equipment to ensure proper taper and thread engagement. Grouting must be performed in accordance with the manufacturer's recommended grouting procedures. All couplers shall be installed per the manufacturer's approved procedures.

## TECHNICAL DATA SHEET

### TECHNICAL DATA

Bar Size	Bar Size [mm]	Bar Size [M]	Coupler Dimensions [mm]					Taper Thread	Part #
			A	B MAX	B MIN	ØC	ØD		
#4	[13]	[10]	151.5	120.5	89	54.5	32	D310 #4	102101SUB
#5	[16]	[15]	178.5	146	111	58.5	36	D310 #5	102102SUB
#6	[19]	[20]	200.5	165	130	66	44	D310 #6	102103SUB
#7	[22]	-	225	184	149	70.5	48	D310 #7	102104SUB
#8	[25]	[25]	256	210	178	73.5	51	D310 #8	102105SUB
#9	[29]	[30]	280.5	228.5	190.5	77	55	D310 #9	102106SUB
#10	[32]	-	305	248	216.5	84.5	59	D310 #10	102107SUB
#11	[36]	[35]	329.5	260.5	235	93	68	D310 #11	102108SUB
#14	[43]	[45]	406	337	286.5	104.5	76	D310 #14	102109SUB
#18	[57]	[55]	549.5	457	393.5	133.5	95.5	D310 #18	102110SUB

all dimensions are in millimeters

### APPROVALS / COMPLIANCE

- Fully tested and compliant with ICC-ES AC133
- IAPMO UES Listed (ER-0319)
- CAN/CSA A23.3 2019 Type 1 & Type 2 (CSA G30.18, Grade 400W, 500W & 600W)
- CAN/CSA S-6 2019
- International Building Code (IBC)

### INSTALLATION

- For installation instructions please refer to D390 Taper- Lock Grout Sleeve Application / Installation Guide.

### RELATED PRODUCTS

- D310 Taper-Lock Standard Coupler
- D410 Sleeve-Lock Grout Sleeve
- D370 Threaded Bar
- D487 Field End Seal Plug
- D490 High Strength Splicing Grout
- D491 Formsaver
- D491 Sleeve-Lock Form Plug

### HOW TO ORDER

- Specify: (1) quantity, (2) name, (3) bar size
- Example: 250, D390 Taper-Lock Grout Sleeve, #7

### ORDERING INFORMATION

#### D390 TAPER-LOCK® GROUT SLEEVE

Product Code	Description	Weight
102101SUB	D390 GROUT SLEEVE #4 [13MM]	1.40 KG
102102SUB	D390 GROUT SLEEVE #5 [16MM]	1.77 KG
102103SUB	D390 GROUT SLEEVE #6 [19MM]	2.38 KG
102104SUB	D390 GROUT SLEEVE #7 [22MM]	2.98 KG
102105SUB	D390 GROUT SLEEVE #8 [25MM]	3.50 KG
102106SUB	D390 GROUT SLEEVE #9 [29MM]	4.01 KG
102107SUB	D390 GROUT SLEEVE #10 [32MM]	5.22 KG
102108SUB	D390 GROUT SLEEVE #11 [36MM]	6.94 KG
102109SUB	D390 GROUT SLEEVE #14 [43MM]	10.21 KG
102110SUB	D390 GROUT SLEEVE #18 [57MM]	23.95 KG

### MANUFACTURER

Dayton Superior Corporation  
1125 Byers Road  
Miamisburg, OH 45342  
Customer Service: 888-977-9600  
Technical Services: 877-266-7732  
Website: [www.daytonsuperior.com](http://www.daytonsuperior.com)

### WARRANTY (ACCESSORIES)

Limited Warranty. Dayton warrants, for a period of 60 days from the date of shipment (three years from the date of shipment in the case of formwork, excluding any consumable Products included with such formwork), that Products and any associated application drawings and engineering services provided by Dayton ("Ancillary Services") will be free from defects in material and workmanship and, in the case of custom designed formwork, that the formwork will meet the specifications set forth in the design drawings approved by Dayton and Customer. Any claim under this warranty must be made in writing within such warranty period. If any Product and/or Ancillary Service covered by a timely claim are found to be defective, Dayton will, within a reasonable time, make any necessary repairs or corrections or, at Dayton's option, replace the Product. Unless pre-authorized by Dayton in writing, Dayton will not accept any charges for correcting defects or accept the return of any Product. This warranty will not apply to any Products that have been subjected to misuse, neglect, storage damage, misapplication, accident or any other damage caused by any person other than Dayton, or that have not been maintained in accordance with Dayton's specifications. THIS LIMITED WARRANTY IS IN LIEU OF ALL OTHER WARRANTIES AS TO THE PRODUCTS AND ANCILLARY SERVICES. DAYTON MAKES NO OTHER WARRANTIES OR GUARANTEES, EXPRESS OR IMPLIED, INCLUDING ANY WARRANTY OF MERCHANTABILITY, FITNESS FOR A PARTICULAR PURPOSE OR OTHERWISE. THE REMEDIES SET FORTH IN THIS SECTION ARE CUSTOMER'S EXCLUSIVE REMEDY FOR BREACH OF WARRANTY.