

BRIDGING THE GAP

with June savings

SUPERIOR DEAL OF THE MONTH
*while supplies last



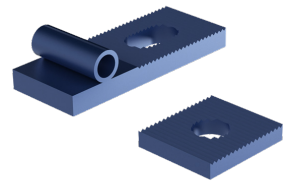
REDUCED PRICING on select*
bridge overhang products



C24 Pres-Steel Half Hanger



C49 Bridge Overhang Bracket



C51 Wall Plate Assembly

C61 Combination Bridge Deck Hanger



C25 Adjustable Half Hanger



C52P Guardrail Speed Bracket Assembly



DaytonSuperior.com
888-977-9600

PROMOTION ENDS JUNE 28, 2024

Contact your Dayton Superior Representative
for details on the June promotion.



*Beginning 6/3/24, special promotional pricing is available for the following products, select C49 Bridge Overhang Brackets (Items 60250), C24 - Pres-Steel Half Hanger (Items 143930, 146674, 124679, 43222, 143926, 154946SUB, 123050, 43210, 105580, & 43215), C25 - Adjustable Half Hanger (Items 145034 & 128312), C51 - Wall Plate Assembly (Items 100206), C61 - Combination Bridge Deck Hanger (Items 43720, 43710, & 101021), & C52P - Guardrail Speed Bracket Assembly (Item 128076). Promo valid only while supplies last. Quantities are limited. Imported item numbers cannot be substituted for the following Domestic products on deal: C49 Bridge Overhang Brackets, C24 Pres-Steel Half Hanger, C25 Adjustable Half Hanger, & C61 Combination Bridge Deck Hanger. All orders must be placed by 5:00 p.m. PST on 6/28/24 with no extended delivery allowed. This promotion is made available in the United States, Canada, and Mexico, except where prohibited by law. Credit terms apply. Qualifying orders will be honored within the terms of Dayton Superior Corporation's delivery schedule. Dayton Superior's standard terms and conditions apply. Void where prohibited. Dayton Superior may alter, suspend, or cancel the promotion at any time without notice.



| Item Number | Item Name |
|-------------|---|
| 60250 | C49 - VERSATILE BRIDGE OVERHANG BRACKET |
| 143930 | C24 - APR 1/2 X 3 X 4 X 2 HANGER |
| 146674 | C24 - 17X4X2" W/PLATE 2X6X1/4 HDG |
| 124679 | C24 - 6" X 4" X 2" |
| 43222 | C24 - 4S - 6" STRUT |
| 143926 | C24 - 18" X 4" X 2" |
| 154946 | C24 - 8X4X2 W/122 DEG BEND HDG |
| 123050 | C24 - 6" X 4" X 2" |
| 43210 | C24 - 1S - 6" STRUT |
| 105580 | C24 - 6" X 4" X 2" |
| 43215 | C24 - 4AS - 6' STRUT |
| 145034 | C25HD - PRES-STEEL HALF HANGER 36" LGTH |
| 128312 | C25 - CONNECTING BAR 3/8" X 1-1/2" X 2-1/2" |
| 100206 | C51 - ADJUSTMENT PLATE ONLY |
| 43720 | C61 - BRIDGE DECK HANGER 90 DEGREE PLAIN |
| 43710 | C61 - BRIDGE DECK HANGER 90/45 DEGREE PLAIN |
| 101021 | C61 - BRIDGE DECK HANGER 90/45 DEGREE GALV |
| 128076 | C52P - GUARDRAIL ASSEMBLY |

**Beginning 6/3/24, special promotional pricing is available for the following products, select C49 Bridge Overhang Brackets (Items 60250), C24 - Pres-Steel Half Hanger (Items 143930, 146674, 124679, 43222, 143926, 154946SUB, 123050, 43210, 105580, & 43215), C25 - Adjustable Half Hanger (Items 145034 & 128312), C51 - Wall Plate Assembly (Items 100206), C61 - Combination Bridge Deck Hanger (Items 43720, 43710, & 101021), & C52P - Guardrail Speed Bracket Assembly (Item 128076). Promo valid only while supplies last. Quantities are limited. Imported item numbers cannot be substituted for the following Domestic products on deal: C49 Bridge Overhang Brackets, C24 Pres-Steel Half Hanger, C25 Adjustable Half Hanger, & C61 Combination Bridge Deck Hanger. All orders must be placed by 5:00 p.m. PST on 6/28/24 with no extended delivery allowed. This promotion is made available in the United States, Canada, and Mexico, except where prohibited by law. Credit terms apply. Qualifying orders will be honored within the terms of Dayton Superior Corporation's delivery schedule. Dayton Superior's standard terms and conditions apply. Void where prohibited. Dayton Superior may alter, suspend, or cancel the promotion at any time without notice.*