

Century Series Bridge Deck Hanger Keeps Construction on Track

SUMMARY

Trains pass frequently along the Norfolk Southern tracks that run through Lebanon, Pennsylvania. At 10th Street, as trains barreled down the tracks, drivers were stopped in their as long lines of traffic backed up at the railroad crossing. While a regular inconvenience to those traveling on 10th Street, the situation was a serious one for emergency vehicles that were often delayed when transporting patients to area hospitals or responding to emergency calls. With more than 55 trains passing through town each day, city leaders knew that the ongoing traffic issues would only worsen over time. Together with the Pennsylvania Department of Transportation, they developed a plan to build a bridge over the 10th Street crossing.

CUSTOMER

- Owner: City of Lebanon, Pennsylvania
- Contractor: JD Eckman, Inc.
- Distributor: Valley Supply

PROJECT

- 10th Street Bridge
- Lebanon, PA

CHALLENGE

In September 2012 10th Street closed for bridge construction to begin. One of the challenges faced by the project contractor, JD Eckman, Inc. was a 5" precast concrete wall panel façade erected outside the fascia beams. Deck concrete was poured short over the beams leaving only a 3" maximum dimension to place a hanger for supplemental closure pour. Traditional wire hangers require a minimum of 5" to work.



Using the Dayton Superior Century Series Bridge Deck Hanger helped avoid costly construction delays.



The Dayton Superior Century Series Bridge Deck Hanger installed in the 10th Street Bridge precast facade panel.

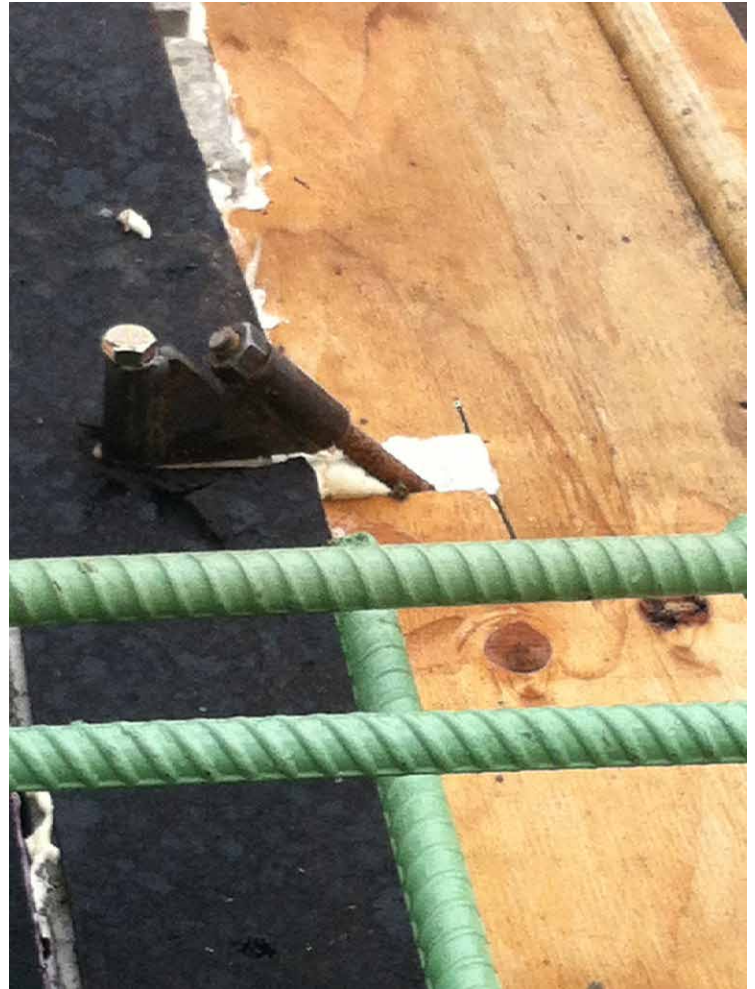
SOLUTION

Dayton Superior was approached by their distributor, Valley Supply to help form a solution. Dayton Superior engineers were able to reduce the minimum dimension down to 3" with the Century Series Bridge Deck Hanger. The laser-cut, one piece design of the Century Series Bridge Deck Hangers meets higher load capacity criteria and doesn't require any special installation equipment. These features contributed to the contractor's ability to stay on schedule, avoiding costly construction delays.

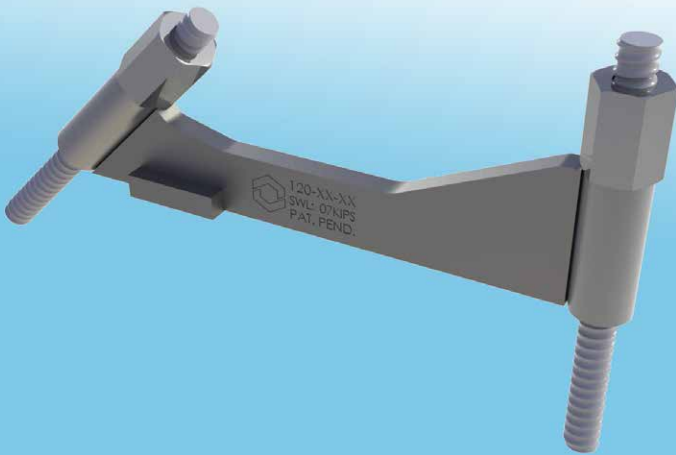
"To my knowledge, the Century Series Hanger is the only hanger of its type on the market today," said Mike Maben, Project Manager with JD Eckman, Inc.

RESULTS

- Dayton Superior engineers were able to meet the 3" maximum dimension to meet the contractor's needs
- No special equipment was required to install the hanger, saving the contractor time and money
- Engineering services provided professional solutions to construction challenges
- Dayton Superior manufactures the Century Series Hanger in the U.S.A., allowing for quick delivery of the high performance, custom designed product



The Century Series Bridge Deck Hanger's installation supports the C-49 Bridge Overhang Bracket during construction.



Dayton Superior's American made Century Series Bridge Deck Hanger is engineered to meet higher load capacity and easily install without any special equipment.

Additional Dayton Superior product information is available online at www.daytonsuperior.com. Contact your Dayton Superior representative at 888-977-9600, or send an email to info@daytonsuperior.com if you would like to discuss how these or other innovative systems can make your construction projects more productive.