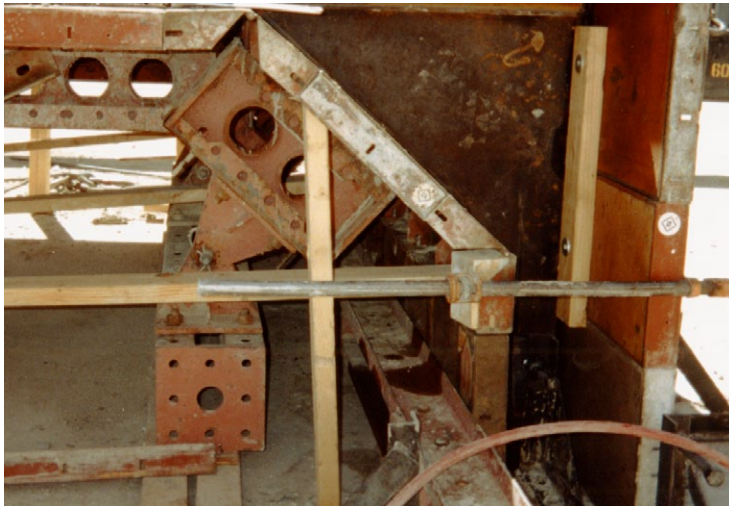


*The precasting forms were supported by soldier beams on jacks.*



*Pivot brackets and hinged corners that created the chamfer.*



*Forms were longer than required for the 7' sections so that workers could have a convenient work area.*

## Building Bridges One Customer at a Time

Amcor Precast, based in Littleton, Colorado, understands the value of using the right concrete forming equipment. When they won the contract for the Waterglen Bridge, they knew that they needed dependable productivity, accuracy and strength to reproduce the 7' culvert sections. Although they were not frequent Symons<sup>®</sup> by Dayton Superior customers, Amcor was interested in obtaining suggestions for this important bridge project.

Amcor was concerned about allowing plenty of room for the crew while setting rebar and pouring the concrete, so Symons suggested using 10' equipment for forming the 7' sections. This scheme gave workers a suitable platform at each end that was free from obstructions. To form the culvert sections, Symons recommended a combination of Steel-Ply<sup>®</sup> components supported by Symons Soldier Beams. The plan utilized standard fillers and hinged corners to produce the short inside wall and the chamfered inside corner on each section.

An assortment of hardware and accessories were included to complete the forming

package. The Symons Soldier Beam assembly involved Strut Jacks for support and Pivot Brackets for the corner detail. Other components such as 5" Walers, Taper Ties, 50 kip Cast Bearing Washers, and various nuts and bolts were clearly detailed on the plans so that there were no surprises for the precaster.

Amcor was impressed with the thoroughness of the forming plan. They particularly appreciated the assembly plans and reported that the project proceeded smoothly pour after pour.



*The contractor was impressed with the durability and productivity of the forming system which gave consistent results pour after pour.*



*Precast contractors require exceptional productivity and predictable results to reproduce structural elements, like bridge segments, on time and within the budget.*

Additional product information is available online at [www.daytonsuperior.com](http://www.daytonsuperior.com). Contact your Dayton Superior representative at 888-977-9600, or send an email to [info@daytonsuperior.com](mailto:info@daytonsuperior.com) if you would like to discuss how these or other innovative systems can make your construction projects more productive.