

### INSPECTION PROCESS SHEET

Dayton Superior's yard maintenance procedures require an inspection of the swivel assembly according to the following upon return of each unit. This inspection process should also be carried out between each use of a brace as it is used in the field. Please refer to images below for visual aid.

#### CHECK FOR DAMAGE

- Inspect all components of the swivel assembly for cracks, breakage, damage or evidence of heat application.
- If any of these instances are found, contact Dayton Superior about repairs and/or replacements.

#### CHECK THE FIT

- The upper and lower parts of the assembly should rotate easily with a free-fit but should not be excessively loose or wobbly.

#### CHECK THE CONNECTING BOLT

- If the bolt is bent, typically the unit will rotate freely in one direction, but will not rotate freely in the opposite direction.
- If this is found, contact Dayton Superior about repairs and/or replacement needs.

#### VERIFY THE SPRING PIN

- Look at the spring pin to verify that it has not been damaged or severely corroded. If it is damaged or corroded, the swivel assembly must be replaced.
- Rotate the foot/wall plate out of the way or remove completely to get a good view of spring pin in swivel assembly.
- If this is found, contact Dayton Superior about repairs and/or replacement needs.

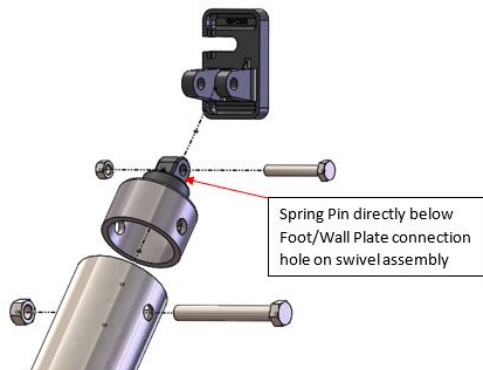


Figure #1: Breakdown Showing Location of Swivel Assembly



Photo #1: Swivel Assembly with Foot/Wall Plate. Rotate Plate out of way to access line of sight to pin (Note: Some versions have pin perpendicular to bolt and visible without moving plate)

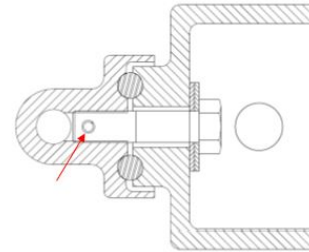


Figure #2: Breakdown of Swivel to show Spring Pin location



Photo #2: Swivel Stop Pin. Foot/Wall Plate removed for clarity

#### IMPORTANT CUSTOMER NOTE

Do not attempt to disassemble or repair the swivel assembly without contacting Dayton Superior first. Reassembly, tightening, or other repairs required on the swivel assembly must be completed or approved by Dayton Superior. All removed or damaged swivel assemblies must be return to Dayton Superior for inspection.

#### TECHNICAL SUPPORT & QUESTIONS

Dayton Superior's Technical Team is here to assist. Contact 877-266-7732.