



BUILDING STRENGTH™

**CHEMICAL
PRODUCTS**

**EPOXIES,
LIQUIDS AND
POWDERS**

HANDBOOK



LEARN MORE

 **DAYTON
SUPERIOR**

 **UNITEX**
By Dayton Superior



*Shown: Top-Cast® Decorative Finish System on page 16
Photos courtesy of Trademark Concrete Systems, Inc.*

Chemicals are important to the long-term life of concrete. Dayton Superior and Unitex by Dayton Superior have a wide variety of chemical products to help achieve success with all of your concrete projects. From curing compounds for freshly placed concrete, to complete rehabilitation on an existing project, we offer the technology to extend concrete life, lower job costs and to provide a strong return on investment.

DAYTON SUPERIOR LINE

EPOXY PRODUCTS.....	4
EPOXY CONSTRUCTION ADHESIVES.....	4,5
EPOXY REPAIR MORTAR KITS	5
EPOXY GROUT	5,6
JOINT FILLER	6
REBAR SPRAY / EPOXY PRIMER	7
EPOXY HEALER/SEALER.....	7
CRACK INJECTION.....	7
POLYMER FLOOR COATING	8
LIQUID PRODUCTS.....	9
FORM RELEASE AGENTS	9,10
CURING COMPOUNDS	10-12
OTHER CURING AID	12
CURE & SEAL COMPOUNDS	12,13
LIQUID HARDENERS / DENSIFIERS	14-15
SPRAY ADHESIVE	15
BOND BREAKERS — TILT-UP CONSTRUCTION	15
ACCELERATORS.....	16
EVAPORATION REDUCERS.....	16
SURFACE RETARDERS / TOP-CAST [®] DECORATIVE FINISH SYSTEM	16
SEALERS.....	18
WATER REPELLENTS.....	18
LATEX BONDING AGENTS / ADMIXTURES	18-19
CLEANERS / STRIPPERS	19
POWDER PRODUCTS.....	20
NON SHRINK GROUTS	20,21
CEMENT BASED REPAIR MORTARS	21-23
CEMENT BASED INDUSTRIAL TOPPING / HARDENERS	23,24
SELF LEVELING FLOOR LEVELERS	24,25
FLOOR PREP.....	25
TOOLS AND EQUIPMENT	25

UNITEX LINE

EPOXY PRODUCTS.....	26
EPOXY CONSTRUCTION ADHESIVES.....	26,27
EPOXY REPAIR MORTAR KITS	27
EPOXY JOINT FILLER.....	27
LIQUID PRODUCTS.....	28
FORM RELEASE AGENTS	28
CURE & SEAL COMPOUNDS	28
SEALERS.....	28
POWDER PRODUCTS.....	29
NON SHRINK GROUTS	29
INDEX	30

TABLE OF CONTENTS



EPOXY PRODUCTS

EPOXY CONSTRUCTION ADHESIVES

ANCHORING GEL / PASTE

Pro-Poxy 300

Epoxy Anchoring Gel

Pro-Poxy 300 is a two component, 100%-solids, moisture tolerant, high modulus epoxy gel adhesive complying with ASTM C881 and AASHTO M-235.

Sure Anchor™ I J51

Epoxy Anchoring Gel

Sure Anchor I J51 is two component, moisture tolerant, 100%-solids, high modulus, rapid setting epoxy gel adhesive that meets ASTM C881 and AASHTO M-235.

All Weather J51AW

Epoxy Anchoring Gel

All Weather J51 AW is a two component 100% solid, moisture tolerant, all weather epoxy acrylate hybrid anchoring gel complying with ASTM C 881 specification requirements. All Weather J51 AW for application temperatures down to 15°F (-9°C).



ProAnchor Elite

Epoxy Anchoring Gel

ProAnchor Elite is two component, moisture tolerant, 100% solids, high modulus epoxy gel adhesive approved for use in cartridges and in bulk for anchors in a vertical down, horizontal, upwardly inclined and overhead installations, anchoring in cracked and un-cracked concrete and internally threaded inserts in un-cracked concrete. Meets requirements of ACI 308.4R and ICC-ES AC308 per IAPMO ER-690. NSF/ANSI/CAN 61 certified.

BONDING ADHESIVES

Sure Bond™ J58*Epoxy Adhesive*

Sure Bond J58 is a 100%-solids, two component, high modulus, medium viscosity, moisture tolerant structural epoxy adhesive that complies with requirements of ASTM C881 and AASHTO M-235. NSF/ANSI/CAN 61 certified.

Pro-Poxy™ 204*Epoxy Adhesive*

Pro-Poxy 204 is a 100% solids, fast setting, two component, high modulus, medium viscosity, moisture tolerant structural epoxy adhesive that meets the requirements of ASTM C881 and AASHTO M-235.

Underwater Substructure Epoxy*Epoxy Adhesive*

Underwater Substructure Epoxy is a 100% solids, low modulus, low viscosity bonding agent. Underwater Substructure meets the requirements of ASTM C881 Type III, Grade 1 as well as AASHTO-AGC-ARTBA.

LOOP SEALANTS

Pro-Poxy™ P606*Airport Lighting Sealant*

Pro-Poxy P606 is a two component, 100%-solids, flexible epoxy sealant. It is ideal for securing wiring and lighting fixtures in roadways and airport runways and taxiways in asphalt and concrete substrates. Pro-Poxy P606 meets the requirements of FAA Specification P-606.



EPOXY REPAIR MORTAR KITS

Rapid Resin Repair*Epoxy Repair Mortar Kit*

Rapid Resin Repair is a three component, 100%-solids, low modulus, all weather, non-shrinking epoxy/urethane hybrid concrete repair material. Rapid Resin Repair utilizes 100%-solids epoxy/urethane technology with specialty graded aggregates for achieving rapid turnaround concrete repairs in all weather conditions. Unit consists of three parts: component "A" epoxy resin, component "B" modified amine curing agent, and component "C" specially graded aggregate.

Sure Patch™*Epoxy Repair Mortar Kit*

Sure Patch is a three component, 100%-solids, low modulus epoxy resin system containing specially selected aggregates. A unit consists of: component "A" epoxy resin, component "B" modified amine curing agent, and component "C" specially graded aggregate.

ProPatch VO*Epoxy Repair Mortar Kit*

ProPatch VO is two component, moisture tolerant, high modulus, high strength, structural epoxy paste adhesive available in cartridge and bulk systems. Its specially formulated non-sag properties are perfect for overhead and vertical repairs. ASTM C881-15 / AASHTO M235 Type I, II, IV & V, Grade 3 Class B & C. Acceptable for use in USDA inspected facilities. Withstands freeze thaw conditions per ASTM C666 - Procedure B. NSF/ANSI/CAN 61 certified.



EPOXY GROUT

Epoxy Grout J55

Epoxy Grout

Epoxy Grout J55 is a three component system of blended aggregates and pre-measured 100%-solids, very low exotherm epoxy resin. Place up to a maximum of 8 inches (20.3 cm) deep in a single pour resulting in a 95% bearing area when properly installed.

JOINT FILLER

Pro-Flex

Epoxy Joint Filler

Pro-Flex is a 100%-solids, two component, low shrink, moisture tolerant joint filler and crack repair material. Designed to fill saw cut joints to prevent joint break-down during load transfers.

REBAR SPRAY/EPOXY PRIMER

Rebar Spray J62

Rebar Coating

Rebar Spray J62 is an epoxy coating packaged in a ready-to-use 11 ounce spray can. Epoxy green.

EPOXY HEALER/SEALER

Bridge Seal 75%

Epoxy Healer/Sealer

Bridge Seal 75% is a highly penetrating, two component epoxy healer/sealer which when applied to cracked bridge decks or elevated concrete, structurally seals the cracks against moisture and chloride ion intrusion.





POLYMER FLOOR COATING

Spec Cote 100

Epoxy Floor Coating

Spec Cote 100 is a 100% solids, two-component epoxy coating used to protect and seal concrete floors, steel and other interior applications. Available in 14 colors, Spec Cote 100 combines excellent wear resistance with a tough high gloss appearance that protects concrete from dusting and mild to moderate chemical spills.

Spec Cote 100 Clear

Epoxy Floor Coating

Spec Cote 100 Clear is a 100% solids, two-component, water-clear epoxy coating used to protect and seal concrete floors, steel and other interior applications. Spec Cote 100 Clear combines excellent wear resistance with a tough high-gloss appearance that protects concrete from dusting and mild to moderate chemical spills.

Spec Cote 100 CR

Novolac Epoxy Floor Coating

Spec Cote 100 CR is a 96% solids, two-component novolac epoxy coating used to protect and seal concrete floors requiring a high degree of chemical and abrasion resistance. Available in 3 colors, Spec Cote 100 CR combines excellent chemical and wear resistance with a tough semi-gloss appearance that protects concrete from moderate to harsh chemical spills.



Spec Cote WB

Water-Based Epoxy Floor Coating

Spec Cote WB is a two-component, water-based epoxy coating used to protect and seal concrete floors and other interior applications. Excellent as a stand-alone sealer or a primer for the Spec Cote line, Spec Cote WB offers great color retention in 13 options (plus clear) and a satin gloss appearance that protects concrete from mild to moderate chemical spills.



Spec Cote Urethane

Polyurethane Floor Coating

Spec Core Urethane is a two-component aliphatic polyurethane coating with outstanding resistance to chemicals, abrasion, and weather. Color stable and non-yellowing, Spec Cote Urethane has excellent impact resistance and UV stability for use in interior or exterior applications. Spec Cote Urethane is available in clear and 13 colors, offers a high-gloss finish, and protects concrete from moderate to harsh chemical spills.

NOTES



What Does “Earth Friendly” (EF) Mean?

- VOC < 100 g/l
Meets SCAQMD, OTC, LADCO & CARB.
May contribute towards LEED Credits
- Unique to Market — Investment in improved chemistries and technologies
- High Performance — Contractor Embraced — Designer Trusted

EF Technology Products Can Contribute Toward the Following LEED Credits:

- LEED EQ Credit 3.1: Construction Worker Safety
- LEED EQ Credit 4.2: Low-Emitting Materials
- LEED MR Credit 6: Rapidly Renewable Materials
- LEED MR Credit 5.1: Regional Materials
- LEED MR Credit 5.2: Regional Materials

Products

- Clean Strip™ J1EF
- Clean Strip™ J100 VOC
- Cure & Seal 1315 EF
- Cure & Seal 309 EF
- Ultra Seal EF™
- Clear Cure VOC J7WB

Earth Friendly products are indicated with this symbol.



LIQUID PRODUCTS

FORM RELEASE AGENTS

OIL BASED

Clean Strip™ J1A

Form Release

Clean Strip J1A is a low VOC, ready-to-use, petroleum based, chemically reactive concrete form release that effectively prevents bonding of concrete to forms and formliners. Special note: **Available in a Winter Grade - cold weather formula to increase sprayability and application rates.**

Clean Strip™ J2

Form Release

Clean Strip J2 is a ready-to-use, petroleum based, chemically reactive liquid concrete form release agent. Clean Strip J2 effectively prevents bonding of concrete to forms and formliners. Regular use of Clean Strip J2 will increase the life of all forms. Special note: **Available in a Winter Grade - cold weather formula to increase sprayability and application rates.**

Clean Strip™ Ultra J3

Form Release

Clean Strip Ultra J3 is a premium, low odor, ready-to-use, low VOC, chemically reactive form release ideal for architectural and precast concrete and for general forming applications. Clean Strip Ultra J3 works to ensure clean, positive release of plywood, fiberglass, aluminum, steel and other concrete forming materials. Clean Strip Ultra J3 prolongs the life of plywood forms, and reduces rusting of steel forms. Clean Strip Ultra J3 is non-staining, reduces the number of surface air voids (bugholes) and will not interfere with the adhesion of subsequent coatings.

Clean Strip™ J100 VOC

Earth Friendly Form Release

Clean Strip J100 VOC is VOC compliant in all areas of the U.S. It is ready-to-use, petroleum based, chemically reactive concrete form release that effectively prevents bonding of concrete to forms and formliners. Regular use will increase the life of all forms. Formulated for less than 100 g/l environmental regulations. Complies with SCAQMD, OTC, LADCO & CARB requirements.





Magic Kote[®]

Form Release

Magic Kote is a low VOC, ready-to-use, petroleum based, chemically neutral, diesel free concrete form release. Magic Kote is water insoluble and contains no waxes. Magic Kote effectively prevents bonding of concrete to forms and formliners. Regular use of Magic Kote will increase the life of all forms.

WATER BASED

Clean Strip[™] J1EF

Earth Friendly Form Release

Clean Strip J1EF is an economical low VOC, concrete form release agent. Clean Strip J1EF works to ensure clean, positive release on plywood, fiberglass, aluminum, steel, urethane and other concrete forming materials and form liners. This product acts as a barrier to the adhesion of concrete while minimizing surface dusting. Properly applied, Clean Strip J1EF will not stain concrete or interfere with the adhesion of coatings. Clean Strip J1EF is compliant with all US VOC regulations for Concrete Form Release agents including Federal EPA, OTC, LADCO, SCAQMD & CARB. Certified to NSF/ANSI Standard 61. Tested to CDPH V1.2.



CURING COMPOUNDS

RESIN BASED

White Resin Cure J10W

Concrete Curing Compound

A water-based, resin, liquid membrane forming curing compound for freshly finished concrete. White Resin Cure J10W is white pigmented to reflect the heat of the sun. Complies with ASTM C309.

Clear Cure VOC J7WB

Earth Friendly Concrete Curing Compound

Clear Cure VOC J7WB is a VOC compliant, water based clear resin dissipating curing compound. It contains <100 g/L VOC's making it compliant in all areas of the United States & Canada. Clear Cure VOC J7WB may contribute to LEED credits. It provides excellent curing properties for newly placed concrete and is easier to remove than most curing membranes. Complies with ASTM C309. Certified to NSF/ANSI Standard 61. Tested to CDPH V1.2.



Suggestions for form releases include, but are not limited to:

- Forms need to be clean and dry before application. Rust and dirt will transfer to the concrete surface.
- All new non-coated plywood should be treated with a lime-water solution prior to its first use in forming. This solution will neutralize the naturally occurring wood sugars in the plywood surface.
- Apply form releases only during dry weather.
- Apply with low pressure spray using a wide angle, low flow, flat fan-type spray nozzle.
- All new wood forms require a heavy application of form release prior to their first use. This application should be heavy enough to saturate the wood forms. Multiple coats of form release are often necessary to accomplish this saturation, and we recommend waiting at least 5 to 6 hours between coats.
- On smooth, dense form surfaces, like steel or aluminum, the best performance will be achieved by spraying the form release uniformly and wiping down the form surfaces with a clean soft cloth.
- Do not over-apply. Over-application can result in concrete “dusting”, “bug holes” and other surface defects.
- Do not apply petroleum-based form releases to polystyrene form surfaces.
- Avoid over spraying onto reinforced steel — it may act as a bondbreaker on reinforcing steel.



Form Release is Field-Proven

Alcoa Concrete Construction steadily poured over 1,500 foundations in the Philadelphia tri-state area each year with their Steel-Ply® forms. With more than 100 years of combined experience, owners Duarte, Frank and Armando Alexander know that form release not only affects the finish of the wall, but the life of the forming systems they own.

Duarte Alexander stated, “We base our form release purchases on two criteria: we need a release that provides us with a clean strip and suitable finish, plus we want to minimize buildup and maximize the lifespan of our forming equipment.”

After trying a variety of form releases, Alcoa Concrete Construction decided that they like the results they get from using Magic Kote on jobs utilizing the Steel-Ply. Duarte reports, “With Magic Kote, we can achieve success with both criteria.”

Details of Magic Kote® Form Release are found on page 10 of this handbook.

Clear Resin Cure J11W

Concrete Curing Compound

Clear Resin Cure J11W is an all resin, dissipating water-based curing compound. Complies with ASTM C309. Tested to CDPH V1.2.



Resin Cure with Dye J11WD

Concrete Curing Compound

Resin Cure with Dye J11WD is an all resin, dissipating water-based curing compound containing a fugitive dye. Complies with ASTM C309.



WAX BASED

White Wax Cure J9A

Concrete Curing Compound

A water-based, wax, liquid membrane forming curing compound for freshly finished concrete. White Wax Cure J9A is white pigmented to reflect the heat of the sun. Complies with ASTM C309.



OTHER CURING AID

Cure Hard J14

Curing Aid and Hardener



Cure Hard J14 is a ready-to-use, water-based general-purpose curing aid designed to help ensure proper concrete strength development. Cure Hard J14 will not interfere with future flooring adhesives, coatings, treatments or flooring materials. NSF/ANSI/CAN 61.

CURE & SEAL COMPOUNDS

SOLVENT BASED

Cure & Seal LV 25% J20UV

Solvent Based Cure & Seal

Cure & Seal LV 25% J20UV is an acrylic copolymer cure, seal and dust-proofing compound in an aromatic solvent containing 25% solids. Designed for ease of application and better atomization when spraying in a wide temperature range from 35°F to 90°F (2°C to 32°C). Cure & Seal LV 25% J20UV is ultraviolet stable and resists yellowing. The higher acrylic solids content forms an excellent surface coating with a high gloss finish that provides an outstanding cure performance. Complies with ASTM C1315 and ASTM C309.

Cure & Seal 25% J22UV

Solvent Based Cure & Seal

Cure & Seal 25% J22UV is an acrylic copolymer cure, seal and dust-proofing compound in an aromatic solvent containing 25% solids with special UV stabilizers. The higher acrylic solids content will form an excellent surface coating with a high gloss finish and will provide an outstanding cure performance. Cure & Seal 25% J22UV is ultraviolet light stable and resists yellowing. Complies with ASTM C1315 and ASTM C309.

Cure & Seal 25% J20LVOC

Low VOC Cure & Seal

Cure & Seal 25% J20LVOC is an acrylic copolymer cure, seal and dust-proofing compound in VOC exempt solvent containing 25% solids. It meets both ASTM C309 and C1315 as an outstanding curing compound and excellent surface sealer. J20LVOC is compliant in all areas, excluding SCAQMD. Less than 350 g/L VOCs.



Cure & Seal 30% J23UV

Solvent Based Cure & Seal

Cure & Seal 30% J23UV is an 30% solids acrylic copolymer cure, seal and dust-proofing compound in an aromatic solvent containing special UV stabilizers. The higher acrylic solids content will form an excellent surface coating with a high gloss finish and will provide an outstanding cure performance. Complies with ASTM C1315.

Cure & Seal 30% J23LVOC

Low VOC Cure & Seal

Cure & Seal 30% J23LVOC is an acrylic copolymer cure, seal and dust-proofing compound in VOC exempt solvent containing 30% solids. It meets both ASTM C309 and C1315 as an outstanding curing compound and excellent surface sealer. J23LVOC is compliant in all areas, excluding SCAQMD. Less than 350 g/L VOCs.

KC White Acrylic 25%

Solvent Based Cure & Seal

KC White Acrylic 25% is a white pigmented acrylic copolymer cure, seal and dustproofing compound in an aromatic solvent containing 25% solids. Complies with ASTM C1315.

WATER BASED

Cure & Seal 309 J18

Water Based Cure & Seal

Cure & Seal 309 J18 is a water based acrylic copolymer that offers a combination curing, sealing and dust-proofing for freshly finished concrete surfaces. This product dries to produce a non-yellowing, durable, clear film on concrete. Formulated for interior applications. Non-flammable and free of noxious fumes. Complies with ASTM C309.

Cure & Seal 1315 J22WB

Water Based Cure & Seal

Cure & Seal 1315 J22WB is a water based acrylic copolymer containing 25% solids that offers outstanding curing, sealing and dust-proofing for freshly finished concrete surfaces. The high solids content will form a long-lasting surface membrane with a high gloss finish that will provide excellent cure performance. Provides a non-yellowing, durable, clear film on concrete. Formulated for interior applications. Non-flammable and free of noxious fumes. Complies with ASTM C1315.

WATER BASED/EARTH FRIENDLY

Cure & Seal 309 EF

Earth Friendly Cure & Seal

Cure & Seal 309 EF is an Earth Friendly (EF) non-yellowing acrylic copolymer curing and sealing compound that may contribute to LEED Credits. The Cure & Seal 309 EF formula is low odor and contains VOC <100 g/L, making it compliant in all areas. Cure & Seal 309 EF cures, seals and dustproofs freshly finished concrete surfaces. Complies with ASTM C309. Tested to CDPH V1.2.



Cure & Seal 1315 EF

Earth Friendly Cure & Seal

Cure & Seal 1315 EF is an Earth Friendly (EF) non-yellowing 30% solids acrylic copolymer curing and sealing compound that may contribute to LEED Credits. The Cure & Seal 1315 EF formula is low odor and contains VOC <100 g/L, making it VOC compliant in all areas. Cure & Seal 1315 EF cures, seals and dustproofs freshly finished concrete surfaces. Complies with ASTM C1315. Tested to CDPH V1.2.



LIQUID HARDENERS / DENSIFIERS**Densifier Concentrate J12***Liquid Densifier for Concrete*

A concentrate solution of sodium orthosilicate with a fugitive dye. Mix with water for an economical concrete hardener and dust-proofing compound.

Densifier J13*Liquid Densifier for Concrete*

Densifier J13 is a ready-to-use, water based solution of sodium orthosilicate that reacts with the free lime in the concrete to provide a chemically hardened surface. NSF/ANSI/CAN 61.

Cure Hard J14*Curing Aid and Hardener*

Cure Hard J14 is a ready-to-use, water-based general-purpose curing aid designed to help ensure proper concrete strength development. Cure Hard J14 will not interfere with future flooring adhesives, coatings, treatments or flooring materials. NSF/ANSI/CAN 61.

PENTRA-HARD[®] Densifier*Lithium Concrete Hardener for Concrete*

PENTRA-HARD Densifier is advanced lithium chemistry that hardens and dust-proofs new and existing concrete. This easy-to-use water-based solution requires no rinsing and is VOC compliant in all areas of the world. When sprayed on new or existing concrete, it penetrates into the concrete, where it reacts with free calcium to form insoluble calcium silica hydrate, which makes concrete more water, stain, and abrasion resistant for easier maintenance and longer life. It is also suitable for concrete polishing procedures and helps prolong the life of polished finishes.

**PENTRA-HARD[®] Guard***High Performance Finish, Stain and Wear Protector*

PENTRA-HARD Guard is a high performance finish that adds shine, stain resistance and abrasion resistance to concrete. Effective on all concrete and cement containing floors, this water-based, lithium-fortified material cures quickly to form a clear, extremely hard, micro-coating that protects the substrate, even in demanding industrial and commercial environments. This new chemistry makes concrete surfaces more attractive and easier to maintain, and eliminates the need for waxes, polishes, and acrylics. Best results and coverage will be obtained by densifying the surface with PENTRA-HARD Densifier before applying Pentra-Hard Guard.

PENTRA-HARD[®] Finish*High Gloss Stain and Finish*

PENTRA-HARD Finish is a patented, high-gloss, stain and wear resistant finish for improving the sheen, hardness and chemical resistance of conventional concrete, hardened concrete and/or cement based floors. This water-based, lithium fortified (chemical polish) quickly dries to a clear, extremely hard, micro-coating that tenaciously bonds and reacts with the substrate forming an insoluble bond with the surface. Formulated using Nano-Lithium[®] reactive silicon hybrid polymer technology for extreme gloss, rapid shine development and excellent wear properties, this novel treatment eliminates the need for floor waxes, liquid polishes and conventional resin based coatings. Best results and coverage will be obtained by densifying the surface with PENTRA-HARD Densifier before applying PENTRA-HARD Finish.



PENTRA-HARD[®] is a trademark of Advanced Concrete Technologies (ADVANCED) and sub-licensed exclusively to DAYTON-SUPERIOR and Convergent Concrete Technologies LLC (CONVERGENT). All rights reserved. Products manufactured and marketed by DAYTON SUPERIOR are protected by U.S. patents and/or pending patents under license rights granted by ADVANCED CONCRETE TECHNOLOGIES, LLC; other patents pending.



Sure Hard™ Densifier J17

Liquid Densifier for Concrete

Sure Hard Densifier J17 is a water based, colorless, odorless solution of specialized reactive chemicals that penetrate concrete surfaces to seal, densify and harden the freshly placed or existing concrete. Sure Hard Densifier J17 is VOC compliant in every area of the country and environmentally safe to use.



SPRAY ADHESIVE

GluDown Adhesive

Construction Adhesive

A spray adhesive designed for bonding most construction related materials.

ACA-1000

Construction Adhesive

For use in any general concrete construction application including tilt-up, cast-in-place formwork, precast, structural, and masonry. ACA-1000 can also be used with the Dayton Superior Tilt Bracket Forming System as a supplemental bonding agent. California compliant version is also available.

BOND BREAKERS — TILT-UP CONSTRUCTION

SOLVENT BASED

Sure Lift™ with Dye J6D

Bond Breaker

Sure Lift with Dye J6D is a reactive and membrane forming bond breaker for use in tilt wall construction. Sure Lift with Dye J6D is a special formula of polymers and propriety ingredients designed to provide clean, easy lifting of tilt panels. Sure Lift with Dye J6D has a fugitive dye for ease of visual inspection during application and is also available without the dye upon special request. Complies with ASTM C309 curing standard when applied to a steel troweled concrete substrate.

Sure Lift™ EX

Bond Breaker

Sure Lift EX is a reactive and membrane forming low VOC, exempt-solvent based bond breaker for use in tilt wall construction. With less than 350 g/L VOC, Sure Lift EX is compliant with Canadian restrictions and the US EPA, OTC, LADCO and CARB regions.

HIGH STRENGTH, FAST DRYING WATER BASED

Sure Lift™ J6WB

Water-Based Bond Breaker



Sure Lift J6WB is a liquid, VOC compliant, water-based, reactive and membrane forming bond breaker for use in tilt wall construction. Sure Lift J6WB is a special formula of polymers and propriety ingredients designed to provide clean, easy lifting of tilt panel. Complies with ASTM C309 curing standard when applied to a steel troweled concrete substrate. Approved for use in all 50 states and Canada.

Maxi Tilt™ with Dye

Water-Based Bond Breaker



Maxi Tilt with Dye is a VOC compliant, water-based, reactive and membrane forming bond breaker for use in tilt wall construction. Maxi Tilt with Dye is a special formula of polymers and propriety ingredients designed to provide clean, easy lifting of tilt panels. Maxi Tilt with Dye has a fugitive dye for ease of visual inspection during application. Complies with ASTM C309 curing standard when applied to a steel troweled concrete substrate. Approved for use in all 50 states and Canada.

ACCELERATORS

C-Set

Accelerating Admixture

C-Set is an accelerating admixture for mortar, stucco and concrete. It quickens the hydration of cement resulting in shorter setting times and higher early strengths. C-Set provides improved workability, helps prevent segregation and is a substantial aid in early stiffening for mortar and stucco mixes. It is an aqueous solution of organic and inorganic compounds that produces a rapid heat development of the mortar that helps to protect it from freezing during its early life at low temperatures. VOC compliant.

Q-Set

Non Chloride, Non-Corrosive, Accelerating Admixture

Q-Set is a non-corrosive accelerating admixture which contains no calcium chloride. It quickens the hydration of cement resulting in shorter setting times and high early strength. Q-Set provides improved workability, helps decrease segregation and is a substantial aid in early stiffening for mortar and stucco mixes. It is an aqueous solution of organic and inorganic compounds that produces a rapid heat development of the mortar that protects it from freezing during its early life at low temperatures. VOC compliant.

EVAPORATION REDUCERS

AquaFilm™ Concentrate J74

Evaporation Retardant

AquaFilm Concentrate J74 is a proprietary emulsion of unique organic compounds designed to minimize moisture loss from fresh concrete. AquaFilm Concentrate J74 is economical as a concentrate and is diluted with potable water at a 9 to 1 ratio. As a water based polymer, AquaFilm Concentrate J74 is VOC compliant and contains a blue fugitive dye for ease of visual inspection during application.



TOP-CAST® DECORATIVE FINISH SYSTEM

TOP-CAST® SURFACE RETARDER

Surface Retarder

A water-based, top-surface retarder formulated to produce beautiful exposed aggregate substrates. It is available in twelve depths of etch, each one color and number coded for safety and convenience. No plastic protection or covering required to achieve quality results.

TOP-CAST® SS-100 SITE SAVER

Surface Protectant

An innovative surface protectant designed to keep splatter, color, cementitious toppings, cures and retarder overspray from adhering to the surfaces surrounding a concrete placing and finishing operation.

TOP-CAST® EX-200 WASH-OFF EXTENDER

Extender

A surface retarder extender designed to extend the removal time of Top-Cast® Surface Retarder by several hours depending on jobsite conditions. It is applied after Top-Cast Surface Retarder is completely dried and removed when the surface retarder is removed.



TOP-CAST® PR-300 PENETRATING PROTECTOR

Surface Protectant

Water-based penetrating protector that hardens and dustproofs exposed aggregate, providing water, stain, and abrasion resistance for easier maintenance and a longer life. It is applied after Top-Cast Surface Retarder is removed.

TOP-CAST® CS-400 CURE AND SEAL

Curing & Sealing Compound

Water-based, non-yellowing cure and seal compound that meets ASTM C309. It is designed to cure, seal, and dustproof exposed aggregate concrete while adding an attractive semi-gloss finish.



TOP-CAST® HG-500 HIGH GLOSS SEALER

Sealing Compound

Water-based, non-yellowing concrete sealer designed to seal, protect and add an attractive high-gloss finish to exposed aggregate concrete.



Top-Cast is a trademark of GCP Applied Technologies. All rights reserved.

AquaFilm™ J74RTU*Evaporation Retardant*

AquaFilm J74RTU is a ready-to-use proprietary emulsion of unique organic compounds designed to minimize moisture loss from freshly placed concrete. As a water based polymer, AquaFilm J74RTU is VOC compliant and contains a yellow fugitive dye for ease of visual inspection during application.

SEALERS**SOLVENT BASED****AggreGloss™ J25***Concrete Sealer*

Aggregloss J25 is a UV stable, non-yellowing formulation of 25% solids methacrylate copolymers in an aromatic solvent. Aggregloss J25 forms a tenacious bond to the concrete surface and provides a long lasting, high gloss film.

AggreGloss™ J25LVOC*Low VOC Concrete Sealer*

AggreGloss J25LVOC is a non-yellowing, acrylic concrete sealer designed with advanced and VOC compliant solvents to meet the most stringent VOC requirements. J25LVOC bonds to the surface and provides a hard, long-lasting glossy protective film that brings out the radiance and luster of natural aggregate. Ideal for decorative concrete applications. Less than 100 g/L VOCs.

AggreGloss™ Satin J25S*Concrete Sealer*

AggreGloss Satin J25S is a UV stable, non-yellowing formulation of 25% solids methacrylate copolymers in an aromatic solvent. AggreGloss Satin J25S forms a tenacious bond to the concrete surface and provides a long lasting, low gloss, protective satin film.

AggreGloss™ J25LVOC Satin*Low VOC Concrete Sealer*

AggreGloss J25LVOC Satin is a non-yellowing, acrylic concrete sealer designed with advanced and VOC compliant solvents to meet the most stringent VOC requirements. Bonds to the concrete surface and provides a hard, long-lasting satin protective film. Less than 100 g/L VOCs.

Anti Spall J33*Concrete Sealer*

A uniform blend of mineral spirits and boiled linseed oil used for protecting exterior concrete. Anti Spall J33 has a light amber color.

Tuf Seal™ J35*Concrete Sealer*

Tuf Seal J35 is a clear, nonyellowing sealer comprised of methyl methacrylate polymers. Tuf Seal develops a durable, high gloss finish that not only protects, but also beautifies concrete floors. Tuf Seal J35 provides resistance to oils, grease and gasoline. Protects concrete from excessive outdoor weathering conditions.

Tuf Seal™ J35LVOC*Low VOC Concrete Sealer*

Tuf Seal J35LVOC is a non-yellowing, acrylic sealer for exterior surfaces. Designed with advanced and VOC compliant solvents, J35LVOC protects and emphasizes the natural luster of natural aggregates, providing a long-lasting and durable glossy finish. Less than 100 g/L VOCs.

Tuf Seal™ Satin J35S*Concrete Sealer*

Tuf Seal Satin J35S is a scientifically formulated clear, non-yellowing sealer comprised of methyl methacrylate polymers. It dries to a durable, satin finish that not only protects, but also beautifies floors. Tuf Seal Satin J35S provides resistance to most oil and gas solutions. Protects concrete from excessive outdoor weathering conditions.

Tuf Seal™ J35LVOC Satin

Low VOC Concrete Sealer

Tuf Seal J35LVOC Satin is a non-yellowing, acrylic sealer for exterior surfaces. Designed with advanced and VOC compliant solvents, J35LVOC protects and emphasizes natural aggregates, providing a long-lasting and durable satin finish. Less than 100 g/L VOCs.

WATER BASED / EARTH FRIENDLY

Ultra Seal EF

Earth Friendly Concrete Sealer

Ultra Seal EF is an Earth Friendly (EF) acrylic, non-yellowing concrete sealer that may contribute to LEED Credits. It is low odor and contains VOC < 100 g/L, it is VOC compliant in all areas. Designed to seal, protect and add an attractive gloss to existing concrete and decorative concrete surfaces, Ultra Seal EF is blush resistant and has good resistance to common chemicals such as motor oil, antifreeze, vinegar and bleach. Tested to CDPH V1.2.



WATER REPELLENTS

WATER BASED

Weather Worker™ 10% J26WB

Water Repellent

Weather Worker 10% J26WB is a water based emulsion of siloxane that penetrates into concrete or masonry surfaces to provide long term weatherproofing protection. J26WB Protects Numerous Types of Structures: Cast-In-Place Concrete Precast and Prestressed Concrete Exposed Aggregate Concrete Porous and Dense Brick Concrete Stucco Sandstone and Limestone.



SOLVENT BASED

Weather Worker™ 40% J29

Water Repellent

Weather Worker 40% J29 is a proprietary 40% silane that penetrates into concrete or masonry and provides long term weatherproofing protection.

Weather Worker™ 100% J29A

Water Repellent

Weather Worker™ 100% J29A is a proprietary 100% silane that penetrates into concrete or masonry and provides long term weatherproofing protection.

ANTI-SLIP ADDITIVE

Grip Aid

Anti Slip Additive

Grip Aid is a very fine anti-slip powder that adds texture to most clear or colored sealers.

LATEX BONDING AGENTS/ADMIXTURES**Acrylic Bonding Agent J40***Bonding Agent*

A ready-to-use, non-re-emulsifiable acrylic admixture and bonding agent designed to improve the adhesion and durability of concrete, masonry, terrazzo and portland cement-sand mixes to horizontal and vertical concrete and other surfaces.

PVA Bonding Agent J41*Bonding Agent*

PVA Bonding Agent J41 is a concentrated re-emulsifiable / rewettable polyvinyl acetate (PVA) emulsion for use as a bonding agent for application on concrete, cement board or masonry prior to installing patches, mortars, stucco and plaster.

Level Primer J42RTU*Bonding Agent*

Level Primer J42RTU is a ready-to-use re-emulsifiable primer designed to be used with Levelayer, Econolevel and Level Topping self leveling underlayments.

Level Primer J42*Bonding Agent*

Level Primer J42 is a concentrated re-emulsifiable primer designed to be used with the Levelayer, Econo-level and Level Topping self leveling underlayments.

CLEANERS / STRIPPERS**Citrus Cleaner J48***Concrete Cleaner and Stripper*

Citrus Cleaner J48 is a heavy duty concrete stripper and degreaser used for general cleaning and removal of curing compounds from concrete floors.

Green Bean Clean[®]*Concrete Cleaner and Stripper*

Green Bean Clean is an industrial strength bio-based gel stripper made from renewable resources.

Dissolve It*Concrete Remover*

A chemically active liquid formulated to remove concrete buildup from concrete forms, tools, mixers, hardware, shoring, ready-mix trucks, aluminum forms and post-tension rods. Dissolve It is a viable option to the damaging effects of sandblasting, chipping or hammering concrete from equipment.

POWDER PRODUCTS

NON SHRINK GROUTS

CEMENT BASED

1107 Advantage Grout™

Cement Based Grout

1107 Advantage Grout is a non-shrink, non-corrosive, non-metallic cementitious grout. 1107 Advantage Grout is designed to provide a controlled, positive expansion to ensure an excellent bearing area. 1107 Advantage Grout can be mixed from a fluid to a stiff plastic consistency. Meets ASTM C1107 and CRD-C 621.

Dri Pak Precast Grout

Cement Based Grout

Dri Pak Precast Grout is a non-shrink, non-corrosive, non-metallic cementitious grout. Dri Pak Precast Grout is designed to provide a controlled, positive expansion to ensure an excellent bearing area. Dri Pak Precast Grout can be mixed from a stiff to a flowable consistency.

Sure-Grip® High Performance Grout

Cement Based Grout

Sure-Grip High Performance Grout is a non-shrink, non-corrosive, non-metallic cementitious grout designed to provide a controlled, positive expansion and to ensure an excellent bearing area. Sure-Grip High Performance Grout can be mixed in a flowable and fluid consistency. Certified to NSF/ANSI Standard 61. Meets ASTM C1107 and CRD-C 621.

Sure-Grip® Precision Grout

Cement Based Grout

Sure-Grip Precision Grout is a non-shrink, noncorrosive, non-metallic cementitious grout. Sure-Grip Precision Grout is designed to provide a controlled, positive expansion to ensure an excellent bearing area and can be mixed from a fluid to a stiff plastic consistency. Sure-Grip Precision Grout does not utilize or produce gaseous expansion for height change characteristics. Meets ASTM C1107 and CRD-C 621.

Turbo Grout HP® 12

Cement Based Grout

Turbo Grout HP 12 is a non-shrink, non-corrosive, non-metallic cementitious grout. Turbo Grout HP 12 is designed to provide a controlled, positive expansion to ensure an excellent bearing area and can be mixed from a plastic consistency to a flowable consistency. Turbo Grout HP 12 develops 12,000 -13,500 psi (82.7 - 96.6 MPa) in 28 days. Meets ASTM C1107 and CRD-C 621.



Turbo Grout® LT 12

Cement Based Grout

Turbo Grout LT 12 is a non-shrink, non-corrosive, non-metallic cementitious grout. Turbo Grout LT 12 is designed for use in cooler temperatures to provide faster set times and quicker strength gain than normal cement based non-shrink grouts. Turbo Grout LT 12 develops 13,500 psi in 28 days even at temperatures as low as 35°F. Meets the requirements of ASTM C-1107 placed at 35 to 40°F (1.7 – 4.4°C) @ flowable consistency.



Underwater Grout

Cement Based Grout

A non-shrink cementitious grout designed to resist “wash-out” in underwater or tidal zone grouting applications. Underwater Grout is a specific blend of Portland Cement, specially graded aggregates and admixtures to impart controlled expansion and exceptional cohesiveness for maximum flowability and strength.

Sleeve-Lock[®] Grout

Non-Shrink Grout

Sleeve-Lock Grout is a specially formulated cement based, non-metallic, non-shrink grout designed for the grouting of the Dayton Superior D410 Sleeve-Lock[®] Grout Sleeve. Meets ASTM C1107 and CRD-C 621.

CEMENT BASED REPAIR MORTARS

HORIZONTAL, VERTICAL AND OVERHEAD

Polyfast[™] FS

Repair Mortar

Polyfast FS is a shrinkage compensated, high strength mortar containing portland cement, special polymers and additives to provide an outstanding strength gain along with a fast set. Polyfast FS is a single component trowelable material formulated for vertical, overhead and horizontal repairs.

Recrete[™] 5 Minute

Repair Mortar

Recrete 5 Minute is a general purpose cement based concrete repair and patching material. Recrete 5 Minute is specially formulated to provide a very fast setting repair mortar with excellent workability. Recrete 5 Minute can be used for repair and patching of vertical, overhead and horizontal areas subject to light traffic both interior and exterior.

Recrete[™] 20 Minute

Repair Mortar

Recrete 20 Minute is a general purpose cement based concrete repair and patching material. Recrete 20 Minute is specially formulated to provide a fast setting repair mortar with excellent workability. Recrete 20 Minute can be used for repair and patching of vertical, overhead and horizontal areas subject to light traffic both interior and exterior.

Recrete[™] Light 20 Minute

Repair Mortar

Recrete Light 20 Minute is a general purpose cement based concrete repair and patching material that dries to a light gray color. It is specially formulated to provide a fast setting repair mortar with excellent workability. Recrete Light 20 Minute can be used for repair and patching of vertical, overhead and horizontal areas subject to light interior and exterior traffic.



HORIZONTAL

HD 50

Horizontal Repair Mortar

HD 50 is a fast setting, cement based, fiber reinforced, latex-modified, heavy duty, single component concrete repair material requiring only the addition of water. HD 50 develops high early strength gain and meets the demanding requirements of most US Departments of Transportation specifications.

Pave Patch 3000

Horizontal Repair Mortar

Pave Patch 3000 is a fast setting, cement based, heavy duty, single component concrete repair material requiring only the addition of water. Pave Patch 3000 develops high early strength gain and meets the demanding requirements of most US Departments of Transportation specifications.

DOT Rapid Repair Neat/ Pre-Extended

Horizontal Repair Mortar

DOT Rapid Repair is a rapid-setting, high-strength, polymer-modified hydraulic cement mortar for horizontal concrete repair. It is designed for the repair of heavy duty surfaces and meets ASTM C928. Available as a neat mortar or pre-extended with coarse aggregate.

Special Patch[®]

Horizontal Repair Mortar

Special Patch is a two component polymer-modified, cementitious, concrete repair mortar for use in thin and thick section concrete patching and overlays. Special Patch is ideal for repairing interior warehouse slabs or exterior concrete pavements.



Thin Resurfacer

Horizontal Repair Mortar

Thin Resurfacer is a multi-purpose single component repair and resurfacing product designed for use inside or outside in thicknesses ranging from feather edge up to 1/2 inch (1.3 cm). A polymer modified cement based material that can be placed with a trowel and requires only the addition of water, Thin Resurfacer sets faster than normal concrete and will accept foot traffic in approximately 6-7 hours.

VERTICAL / OVERHEAD

Architectural Finish[™]

Rubbing and Sacking Repair Mortar

Architectural Finish is a single component, cement based material specially formulated for rubbing, smoothing, repairing and restoring vertical or overhead concrete surfaces.

Superior Wall Finish



Rubbing, Smoothing and Reprofilng Repair Mortar

Superior Wall Finish is a single component, cement-based trowel, roller or brush applied mortar designed to eliminate small concrete surfaces blemishes, rough areas, bug holes and form marks on poured walls, tilt-up and precast.

Civil/Structural VO

Vertical/Overhead Repair Mortar

Civil/Structural VO is a cement based mortar designed for structural repairs of vertical or overhead concrete substrates. It is enhanced with a corrosion inhibitor for rebar and steel protection and is especially formulated for use in spray applied applications using wet spray process equipment. Civil/Structural VO has excellent finishing characteristics making it very user friendly to screed and finish. Due to its superb workability, it may also be applied by trowel or hand.

HD 25 VO

Vertical/Overhead Repair Mortar

HD 25 VO is a high strength mortar containing portland cement, special polymers and accelerators to provide an accelerated early strength gain and set time. It is a single component, fiber enhanced trowelable material formulated for vertical and overhead repairs of concrete.

Perma Patch™ VO

Vertical/Overhead Repair Mortar

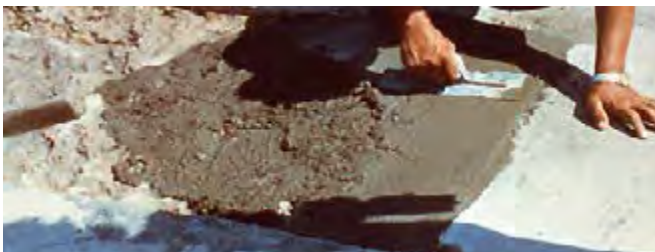
Perma Patch VO is a single component, cement based, patching and repair mortar developed for vertical and overhead applications. Perma Patch VO's unique rapid setting, shrinkage compensating formulation offers excellent durability and ease of application without the use of forms.

CEMENT BASED FORM AND POUR

Civil/Structural FPX

Form and Pour Extended Repair Mortar

Single component, shrinkage compensated Portland-Cement based concrete repair material containing blended coarse aggregate. Civil/Structural FPX is enhanced with a corrosion inhibitor for rebar and steel protection and is designed primarily for large volume placements including structural elements, typically in applications from 1 inch (2.54 cm) to 12 inches (30.48 cm).



SPECIALTY REPAIRS

Anchor All

Anchoring Cement

A fast-setting, non-shrink anchoring cement with controlled expansion. Pourable and fast setting, Anchor All provides a durable high strength anchor for interior and exterior applications.

Waterstop™

Hydraulic Cement Repair Mortar

Waterstop is a non-corrosive, non-rusting, extremely fast setting hydraulic cement compound for plugging and stopping active water leaks in concrete structures or masonry surfaces. When mixed with water to a thick consistency and hand formed into a plug, it will stop active leaks even under water.

CEMENT BASED INDUSTRIAL TOPPINGS / HARDENERS

Emery Tuff™

Emery Dry-Shake Floor Hardener

Emery Tuff is a ready-to-use shake-on floor hardener comprised of a blend of 100% pure emery, special additives and portland cement. Emery Tuff is a material that is extremely hard, tough and abrasion resistant. It will impart very long life and extremely high durability to concrete surfaces. Emery Tuff is completely non corrosive and rust free and can be used inside or outside. Emery Tuff offers a superior alternative to metallic floor hardeners.

Emery Non-Slip™

Non-Slip Emery aggregate for Floors and Pavements

Emery Non-Slip is a non slip aggregate comprised of 100% pure emery. Emery is a natural occurring mined material that is tough and abrasion resistant. It will impart long life and excellent slip resistance for concrete surfaces. Emery Non-Slip is completely non corrosive and rust free, for inside and outside use.

Emery Tuff™ Top

Emery Floor Topping

Emery Tuff Top is a ready-to-use floor topping comprised of a blend of 100% pure emery/corundum, special additives and portland cement. Emery is a natural, mined material that is extremely hard, tough and abrasion resistant. It will impart very long life and extremely high durability to concrete floors and surfaces. Emery Tuff Top is non corrosive, rust free and can be used indoors or out. Emery Tuff Top requires only the addition of water to produce a low slump, trowelable consistency.



Ferro Tuff™

Metallic Dry-Shake Floor Hardener

Ferro Tuff is a ready-to-use metallic floor hardener comprised of clean and well graded iron aggregates, special additives and portland cement. It provides greater impact resistance than other types of dry shake hardeners. Ferro Tuff is available in a natural concrete color.

Quartz Tuff™

Non-Metallic Dry-Shake Floor Hardener

Quartz Tuff is a ready-to-use, non metallic aggregate, dry shake floor hardener comprised of carefully graded quartz aggregates, special additives and portland cement. Proper installation of Quartz Tuff will impart long life and high durability to interior and exterior concrete floors. Quartz Tuff is available in a natural gray concrete color and light reflective.

SELF LEVELING FLOOR LEVELERS

EconoLevel™

Floor Underlayment

EconoLevel is a cement based, non-shrink, self-leveling interior floor underlayment that only requires the addition of water to produce a flowable mixture that can be easily placed or pumped onto the floor. EconoLevel is not a gypsum based product. Prime the concrete surface with Dayton Superior's J42 or J42RTU prior to application.



LevelLayer[®]

Floor Underlayment

Dayton Superior LevelLayer is a cement based, non-shrink, self-leveling floor underlayment designed for interior use. It provides a smooth subfloor formulated to accept floor coverings in as little as 14 hours after installation. LevelLayer is not a gypsum based product. Prime the concrete surface with Dayton Superior's J42 or J42RTU prior to application.

Level Topping[™]

Floor Topping

Level Topping is Dayton Superior's premium cement based, non-shrinking, self-leveling interior floor topping designed as a wearing surface. It only requires the addition of water to produce a free flowing mixture that can be poured or pumped. Level Topping is not a gypsum based product.

Level Topping[™] Exterior

Floor Topping

Level Topping Exterior is a premium cement based, non-shrink, self-leveling topping designed for leveling horizontal concrete. It only requires the addition of water to produce a free flowing mixture that can be poured or pumped onto the floor. Level Topping is not a gypsum based product.

FLOOR PREP

Sure Finish[™]

Floor Underlayment

Dayton Superior Sure Finish is a trowel applied, highly polymer modified, cement based, rapid setting underlayment. It produces a smooth, true "feather finish" to a wide variety of substrates, including wood, concrete, ceramic and existing resilient flooring. Sure Finish can also be used indoors to repair damaged concrete wall surfaces and on exterior concrete walls that are to be coated.

TOOLS AND EQUIPMENT

Spray-Pro

Spray Pumps That Simply Work... Every Time

A comprehensive solution to cost effectively apply our Earth Friendly (EF) Family of High Performance Chemicals.

EPOXY PRODUCTS**EPOXY CONSTRUCTION ADHESIVES****ANCHORING GEL / PASTE****Pro-Poxy™ 300***Epoxy Anchoring Gel*

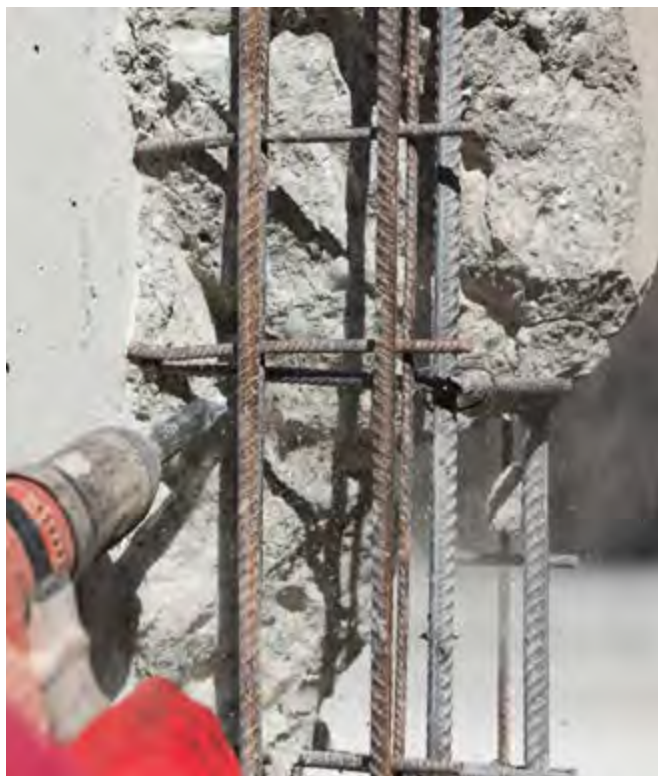
Pro-Poxy 300 is a two component, 100%-solids, moisture tolerant, high modulus epoxy gel adhesive complying with ASTM C881 and AASHTO M-235.

Pro-Poxy™ 300 Fast*Epoxy Anchoring Gel*

Pro-Poxy 300 Fast is two component, moisture tolerant, 100%-solids, high modulus, rapid setting epoxy gel adhesive that meets ASTM C881 and AASHTO M-235. NSF - 61 Approved.

Pro-Poxy™ 400*Epoxy Anchoring Gel*

Pro-Poxy 400 is a two component 100% solid, moisture tolerant, all weather epoxy acrylate hybrid anchoring gel complying with ASTM C 881 specification requirements. Pro-Poxy 400 for application temperatures down to 5°F (-15°C).

**MEDIUM VISCOSITY****Pro-Poxy™ 200***Epoxy Adhesive*

Pro-Poxy 200 is a 100%-solids, two component, high modulus, medium viscosity, moisture tolerant structural epoxy adhesive that complies with requirements of ASTM C881 and AASHTO M-235. Add NSF/ANSI/CAN 61 certified.

Pro-Poxy™ 204*Epoxy Adhesive*

Pro-Poxy 204 is a 100% solids, fast setting, two component, high modulus, medium viscosity, moisture tolerant structural epoxy adhesive that meets the requirements of ASTM C881 and AASHTO M-235.

Slow Set Bonding Agent*Epoxy Adhesive*

Slow Set Bonding Agent is a 100%-solids, two component, high modulus, medium viscosity, moisture tolerant, long open time structural epoxy adhesive complying with the requirements of ASTM C881 and AASHTO M-235.

Pro-Poxy™ P606*Airport Lighting Sealant*

Pro-Poxy P606 is a two component, 100%-solids, flexible epoxy sealant. It is ideal for securing wiring and lighting fixtures in roadways and airport runways and taxiways in asphalt and concrete substrates. Pro-Poxy P606 meets the requirements of FAA Specification P-606.

INJECTION RESIN

Pro-Poxy™ 100*Epoxy Injection Resin*

Pro-Poxy 100 is a 100%-solids, high modulus, moisture tolerant, low viscosity epoxy adhesive for gravity feed or pressure injection of cracks in concrete. Pro-Poxy 100 complies with the requirements of ASTM C881 and AASHTO M-235. Add NSF/ANSI/CAN 61 certified.

Pro-Poxy™ 50*Epoxy Injection Resin*

Pro-Poxy 50 is the super low viscosity version of Pro-Poxy 100. (see previous entry).

EPOXY REPAIR MORTAR KITS**Pro-Poxy™ 2500***Epoxy Repair Mortar Kit*

Pro-Poxy 2500 is a three component, 100%-solids, low modulus epoxy resin system containing specially selected aggregates. A unit consists of: component "A" epoxy resin, component "B" modified amine curing agent, and component "C" specially graded aggregate.

Pro-Poxy™ 2000*Epoxy Grout*

Pro-Poxy 2000 is a three component system of blended aggregates and pre-measured 100%-solids, very low exotherm epoxy resin. Place up to a maximum of 8 inches (20.3 cm) deep in a single pour resulting in a 95% bearing area when properly installed.

**EPOXY JOINT FILLER****Pro-Flex***Epoxy Joint Filler*

Pro-Flex is a 100%-solids, two component, low shrink, moisture tolerant joint filler and crack repair material. Designed to fill saw cut joints to prevent joint breakdown during load transfers.



LIQUID PRODUCTS

FORM RELEASE AGENTS

OIL BASED

Q2® V.O.C.

Form Release

Q2 VOC is a low VOC, ready-to-use, petroleum based, chemically reactive concrete form release that effectively prevents bonding of concrete to forms and formliners. Special note: **Available in a Winter Grade - cold weather formula to increase sprayability and application rates.**

Q2®

Form Release

Q2 is a ready-to-use, petroleum based, chemically reactive liquid concrete form release agent. Q2 effectively prevents bonding of concrete to forms and formliners. Regular use of Q2 will increase the life of all forms.

WATER BASED/EARTH FRIENDLY

Farm Fresh™ XL

Earth Friendly Form Release

Farm Fresh XL is an economical low VOC, concrete form release agent. Farm Fresh XL works to ensure clean, positive release on plywood, fiberglass, aluminum, steel, urethane and other concrete forming materials and form liners. This product acts as a barrier to the adhesion of concrete while minimizing surface dusting. Properly applied, Farm Fresh XL will not stain concrete or interfere with the adhesion of coatings. Farm Fresh XL is compliant with all US VOC regulations for Concrete Form Release agents including Federal EPA, OTC, LADCO, SCAQMD & CARB. NSF/ANSI/CAN 61 certified.



CURE & SEAL COMPOUNDS

SOLVENT BASED

Solvent Seal 1315

Solvent Based Cure & Seal

Solvent Seal 1315 is an acrylic copolymer cure, seal and dust-proofing compound in an aromatic solvent containing 25% solids with special UV stabilizers. The higher acrylic solids content will form an excellent surface coating with a high gloss finish and will provide an outstanding cure performance. Solvent Seal 1315 is ultraviolet light stable and resists yellowing. Complies with ASTM C1315 and ASTM C309.

WATER BASED

Hydroseal™ 18

Water Based Cure & Seal

Hydroseal 18 is a water based acrylic copolymer that offers a combination curing, sealing and dust-proofing for freshly finished concrete surfaces. This product dries to produce a non-yellowing, durable, clear film on concrete. Formulated for interior applications. Non-flammable and free of noxious fumes. Complies with ASTM C309.

SEALERS

SOLVENT BASED

Bright Rock Sealer

Concrete Sealer

Bright Rock Sealer is a UV stable, non-yellowing formulation of 25% solids methacrylate copolymers in an aromatic solvent. Bright Rock Sealer forms a tenacious bond to the concrete surface and provides a long lasting protective high gloss film. Ideal for decorative concrete applications.

POWDER PRODUCTS

NON SHRINK GROUTS

CEMENT BASED

Multipurpose Grout

Cement Based Grout

Multipurpose Grout is a non-shrink, non-corrosive, non-metallic cementitious grout. Multipurpose Grout is designed to provide a controlled, positive expansion to ensure an excellent bearing area. Multipurpose Grout can be mixed from a fluid to a stiff plastic consistency. Meets ASTM C1107 and CRD-C 621.

SPECIALTY REPAIRS

Hydraulic Cement™

Hydraulic Cement Repair Mortar

Hydraulic Cement is a non-corrosive, non-rusting, extremely fast setting hydraulic cement compound for plugging and stopping active water leaks in concrete structures or masonry surfaces. When mixed with water to a thick consistency and hand formed into a plug, it will stop active leaks even under water.



NOTES

309 EF.....	13	J2.....	9	PROANCHOR ELITE.....	4
1107 ADVANTAGE GROUT.....	20	J3.....	9	PRO-FLEX.....	6
1315 EF.....	13	J6D.....	15	PROPATCH VO.....	5
ACA-1000.....	15	J6WB.....	15	PRO-POXY 204.....	5
ACRYLIC BONDING AGENT J40.....	19	J7WB.....	10	PRO-POXY 300.....	4
AGGREGLOSS J25.....	17	J9A.....	12	PRO-POXY P606.....	5
AGGREGLOSS J25LVOC.....	17	J10W.....	10	PVA BONDING AGENT J41.....	19
AGGREGLOSS J25LVOC SATIN.....	17	J11W.....	12	Q-SET.....	16
AGGREGLOSS SATIN J25S.....	17	J11WD.....	12	QUARTZ TUFF.....	24
ALL WEATHER J51AW.....	4	J12.....	14	RAPID RESIN REPAIR.....	5
ANCHOR ALL.....	23	J13.....	14	REBAR SPRAY J62.....	7
ANTI SPALL J33.....	17	J14.....	12, 14	RECRETE 5 MINUTE.....	21
AQUAFILM CONCENTRATE J74.....	16	J17.....	15	RECRETE 20 MINUTE.....	21
AQUAFILM J74RTU.....	17	J18.....	13	RECRETE LIGHT 20 MINUTE.....	21
ARCHITECTURAL FINISH.....	22	J20LVOC.....	12	RESIN CURE WITH DYE J11WD.....	12
BRIDGE SEAL 75%.....	6	J20UV.....	12	SLEEVE-LOCK GROUT.....	21
CITRUS CLEANER J48.....	19	J22UV.....	12	SPEC COTE 100.....	7
CIVIL/STRUCTURAL FPX.....	22	J22WB.....	13	SPEC COTE 100 CLEAR.....	7
CIVIL/STRUCTURAL VO.....	23	J23UV.....	13	SPEC COTE 100 CR.....	7
CLEAN STRIP J1A.....	9	J25.....	17	SPEC COTE WB.....	8
CLEAN STRIP J1EF.....	10	J25S.....	17	SPEC COTE URETHANE.....	8
CLEAN STRIP J2.....	9	J25LVOC.....	17	SPECIAL PATCH.....	22
CLEAN STRIP J100 VOC.....	9	J26WB.....	18	SPRAY-PRO SPRAYER.....	25
CLEAN STRIP ULTRA J3.....	9	J29.....	18	SUPERIOR WALL FINISH.....	22
CLEAR CURE VOC J7WB.....	10	J29A.....	18	SURE ANCHOR I J51.....	4
CLEAR RESIN CURE J11W.....	12	J33.....	17	SURE BOND J58.....	5
C-SET.....	16	J35.....	17	SURE FINISH.....	25
CURE HARD J14.....	12, 14	J35LVOC.....	18	SURE-GRIP HIGH PERFORMANCE GROUT.....	20
CURE & SEAL 25% J20LVOC.....	12	J35S.....	17	SURE-GRIP PRECISION GROUT.....	20
CURE & SEAL 25% J22UV.....	12	J40.....	18	SURE HARD DENSIFIER J17.....	15
CURE & SEAL 30% J23LVOC.....	13	J41.....	19	SURE LIFT EX.....	15
CURE & SEAL 30% J23UV.....	13	J42.....	19	SURE LIFT J6WB.....	15
CURE & SEAL 309 EF.....	13	J42RTU.....	19	SURE LIFT WITH DYE J6D.....	15
CURE & SEAL 309 J18.....	13	J48.....	19	SURE PATCH.....	5
CURE & SEAL 1315 EF.....	13	J51.....	4	THIN RESURFACER.....	22
CURE & SEAL 1315 J22WB.....	13	J51AW.....	4	TOP-CAST CS 400 CURE AND SEAL.....	16
CURE & SEAL LV 25% J20UV.....	12	J55.....	6	TOP-CAST DECORATIVE FINISH SYS.....	16
DENSIFIER CONCENTRATE J12.....	14	J58.....	4	TOP-CAST EX 200 WASH OFF EXT.....	16
DENSIFIER J13.....	14	J62.....	6	TOP-CAST HG 500 HIGH GLOSS SEAL.....	16
DISSOLVE IT.....	19	J74.....	16	TOP-CAST PR 300 PENETRATING PROT.....	16
DOT RAPID REPAIR NEAT/PRE-EXTEND.....	22	J74RTU.....	17	TOP-CAST SS-100 SITE SAVER.....	16
DRI PAK PRECAST GROUT.....	19	J100 VOC.....	9	TOP-CAST SURFACE RETARDER.....	16
EARTH FRIENDLY.....	9	KC WHITE ACRYLIC 25%.....	13	TUF SEAL J35.....	17
ECONOLEVEL.....	24	LEVELAYER.....	25	TUF SEAL J35 LVOC.....	17
EMERY NON-SLIP.....	24	LEVEL PRIMER J42.....	19	TUF SEAL J35 LVOC SATIN.....	18
EMERY TUFF.....	23	LEVEL PRIMER J42RTU.....	19	TUF SEAL SATIN J35S.....	17
EMERY TUFF TOP.....	24	LEVEL TOPPING.....	25	TURBO GROUT HP12.....	20
EPOXY GROUT J55.....	5	LEVEL TOPPING EXTERIOR.....	25	TURBO GROUT LT12.....	20
FERRO TUFF.....	24	MAGIC KOTE.....	10	ULTRA SEAL EF.....	18
GLUDOWN ADHESIVE.....	15	MAXI TILT WITH DYE.....	15	UNDERWATER GROUT.....	21
GREEN BEAN CLEAN.....	19	PAVE PATCH 3000.....	22	UNDERWATER SUBSTRUCTURE EPOXY.....	5
GRIP AID.....	18	PENTRA-HARD DENSIFIER.....	14	WATERSTOP.....	23
HD 25 VO.....	23	PENTRA-HARD FINISH.....	14	WEATHER WORKER 10% J26WB.....	18
HD 50.....	22	PENTRA-HARD GUARD.....	14	WEATHER WORKER 40% J29.....	18
J1A.....	9	PERMA PATCH VO.....	23	WEATHER WORKER 100% J29A.....	18
J1EF.....	10	POLYFAST FS.....	21	WHITE RESIN CURE J10W.....	10

1315.....	28	PRO-POXY 50.....	27	PRO-POXY P606.....	26
BRIGHT ROCK SEALER.....	28	PRO-POXY 100.....	27	PRO-POXY 2000.....	27
FARM FRESH XL.....	28	PRO-POXY 200.....	26	PRO-POXY 2500.....	27
HYDRAULIC CEMENT.....	29	PRO-POXY 204.....	26	Q2.....	28
HYDROSEAL 18.....	28	PRO-POXY 300.....	26	Q2 VOC.....	28
MULTIPURPOSE GROUT.....	29	PRO-POXY 300 FAST.....	26	SLOW SET BONDING AGENT.....	26
PRO-FLEX.....	27	PRO-POXY 400.....	26	SOLVENT SEAL 1315.....	28





DAYTON[®] SUPERIOR

1125 Byers Road
Miamisburg, OH 45342
937-866-0711
888-977-9600
WWW.DAYTONSUPERIOR.COM



**BUILDING
STRENGTH™**



DS16
REV 02/24
Copyright ©2023 Dayton Superior Corporation, All Rights Reserved.