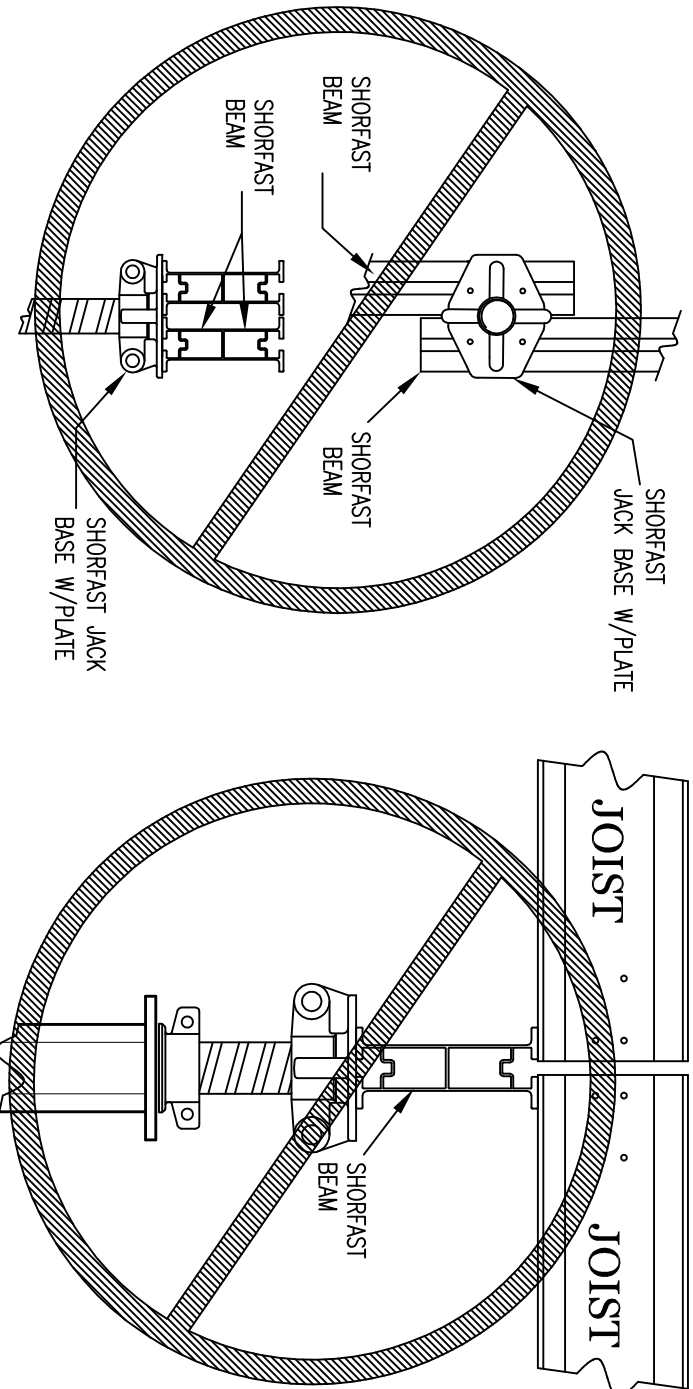


ALL SYMONS COMPONENTS AND ACCESSORIES ARE DESIGNED WITH SAFETY AND PERFORMANCE IN MIND. THE APPLICATION NOTES ON THIS SHEET WILL HELP YOU ACHIEVE A SAFE AND PRODUCTIVE FORMING OPERATION. IT IS RECOMMENDED THAT ALL CONSTRUCTION PERSONNEL, THOROUGHLY FAMILIARIZE THEMSELVES AND COMPLY WITH THE APPLICABLE INDUSTRY STANDARDS AND SAFE PRACTICES ESTABLISHED BY THE AMERICAN CONCRETE INSTITUTE, AMERICAN NATIONAL STANDARDS INSTITUTE, THE OCCUPATIONAL SAFETY AND HEALTH ADMINISTRATION, AND THE SCAFFOLDING AND SHORING INSTITUTE.

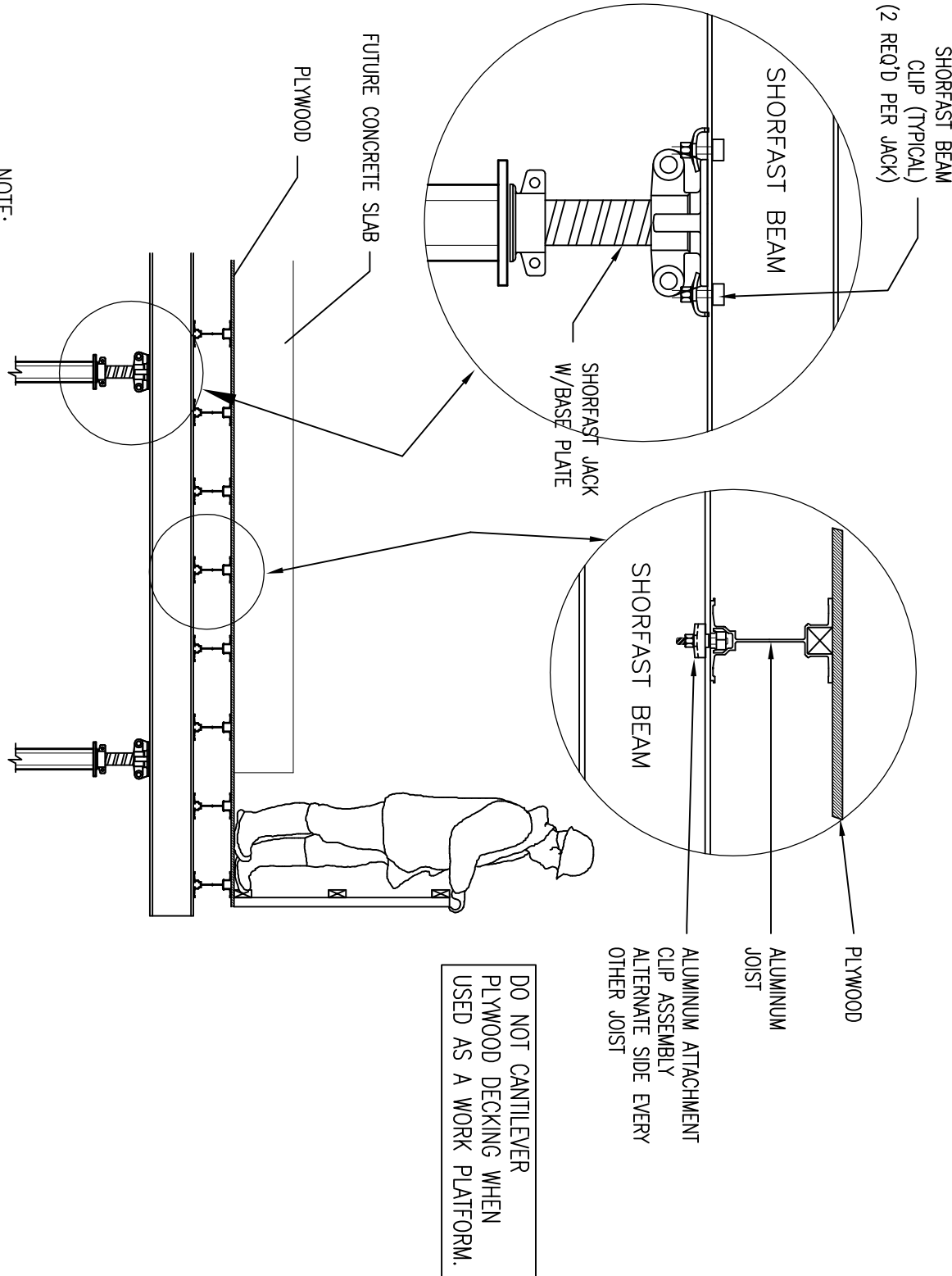
IMPORTANT:
ALL FORMING AND SHORING COMPONENTS MUST BE INSPECTED REGULARLY FOR DAMAGE OR EXCESSIVE WEAR. EQUIPMENT FOUND TO BE DAMAGED OR EXCESSIVELY WORN MUST BE REPLACED IMMEDIATELY.



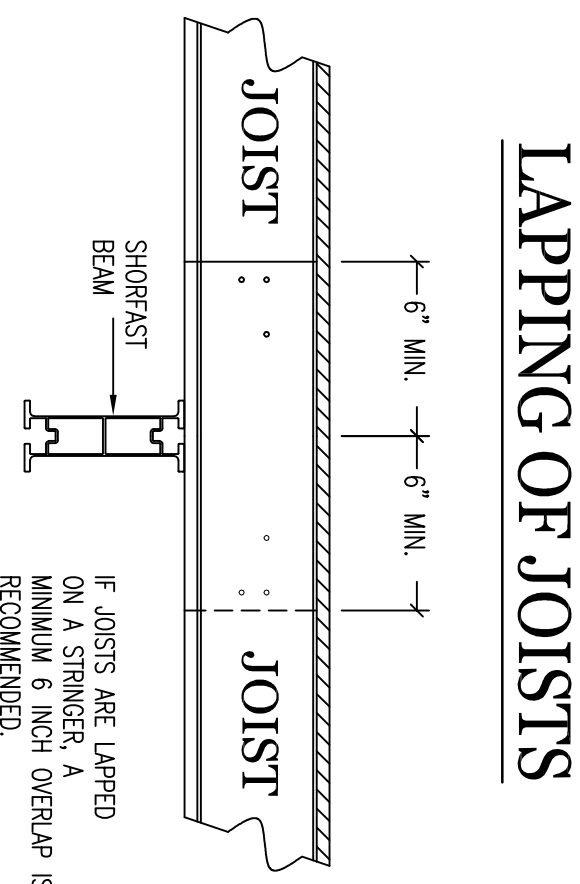
DO NOT OVERLAP STRINGER ON BASE PLATE!

DO NOT BUTT JOISTS ON STRINGER!

CANTILEVERED STRINGER

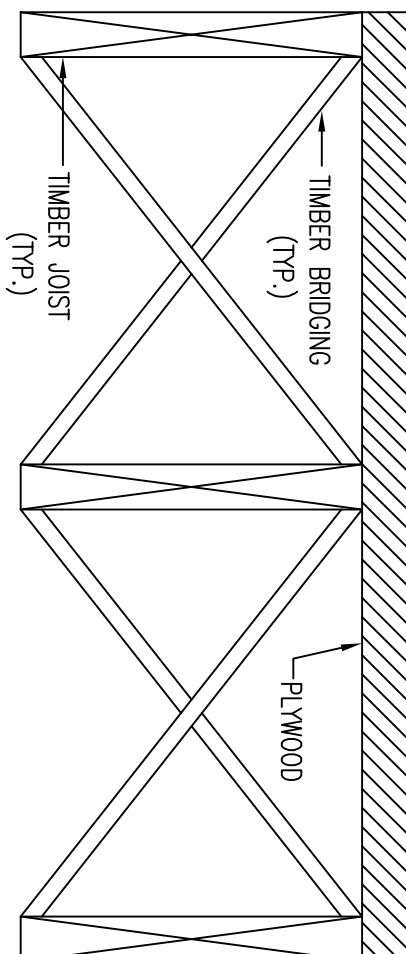


NOTE:
DO NOT PLACE ANY LOAD ON CANTILEVERED PORTION OF STRINGERS (USED TO PROVIDE WORK PLATFORM) UNTIL THEY HAVE BEEN SECURED TO SHORING HEADS AND VERTICAL TIE-DOWN OR SUFFICIENT DEAD LOAD PLACED ON INTERIOR SPAN TO COUNTERBALANCE BY A 4:1 RATIO ALL ANTICIPATED LOADS.



LAPPING OF JOISTS

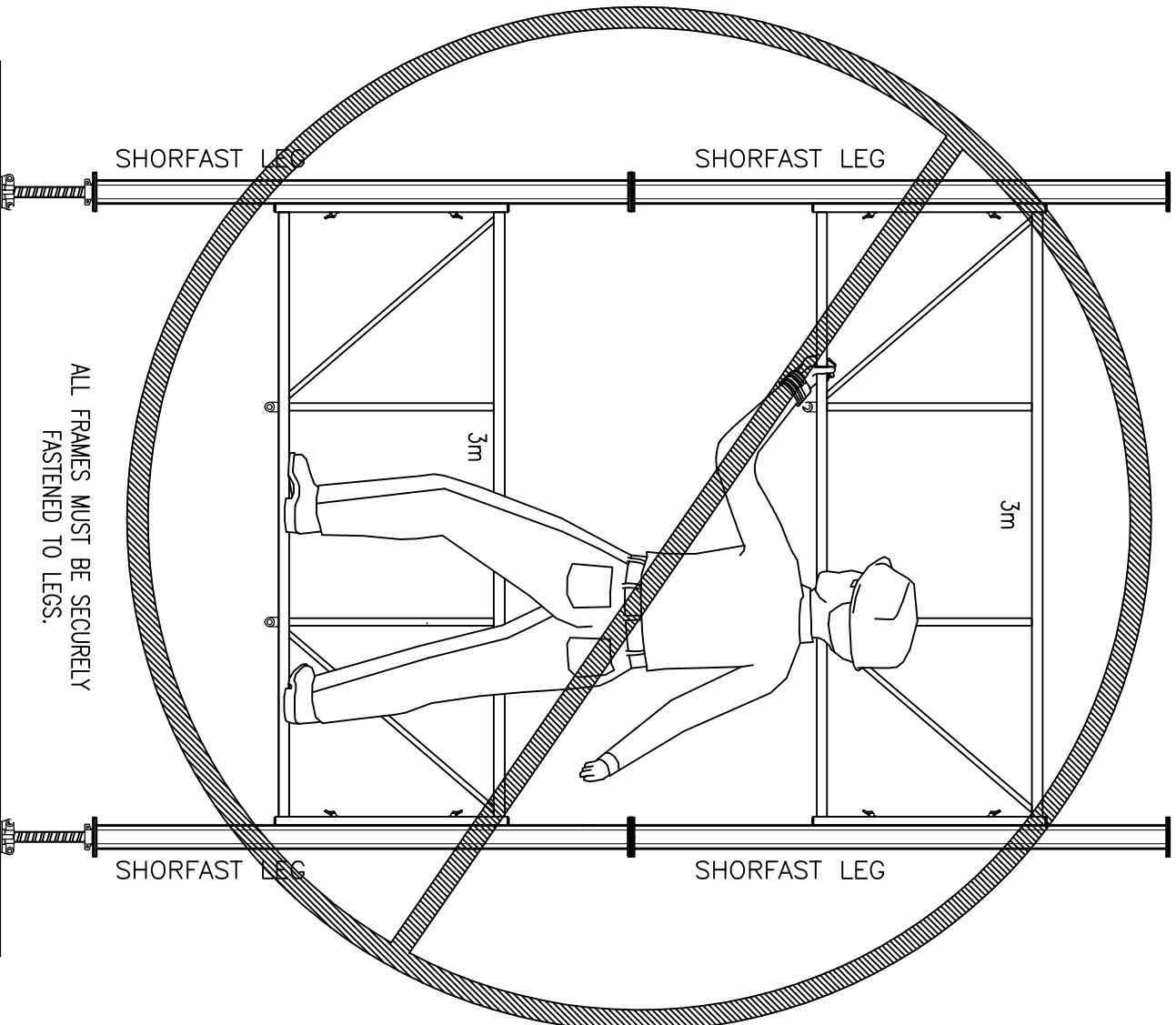
IF JOISTS ARE LAPPED ON A STRINGER, A MINIMUM 6 INCH OVERLAP IS RECOMMENDED.



TIMBER JOISTS

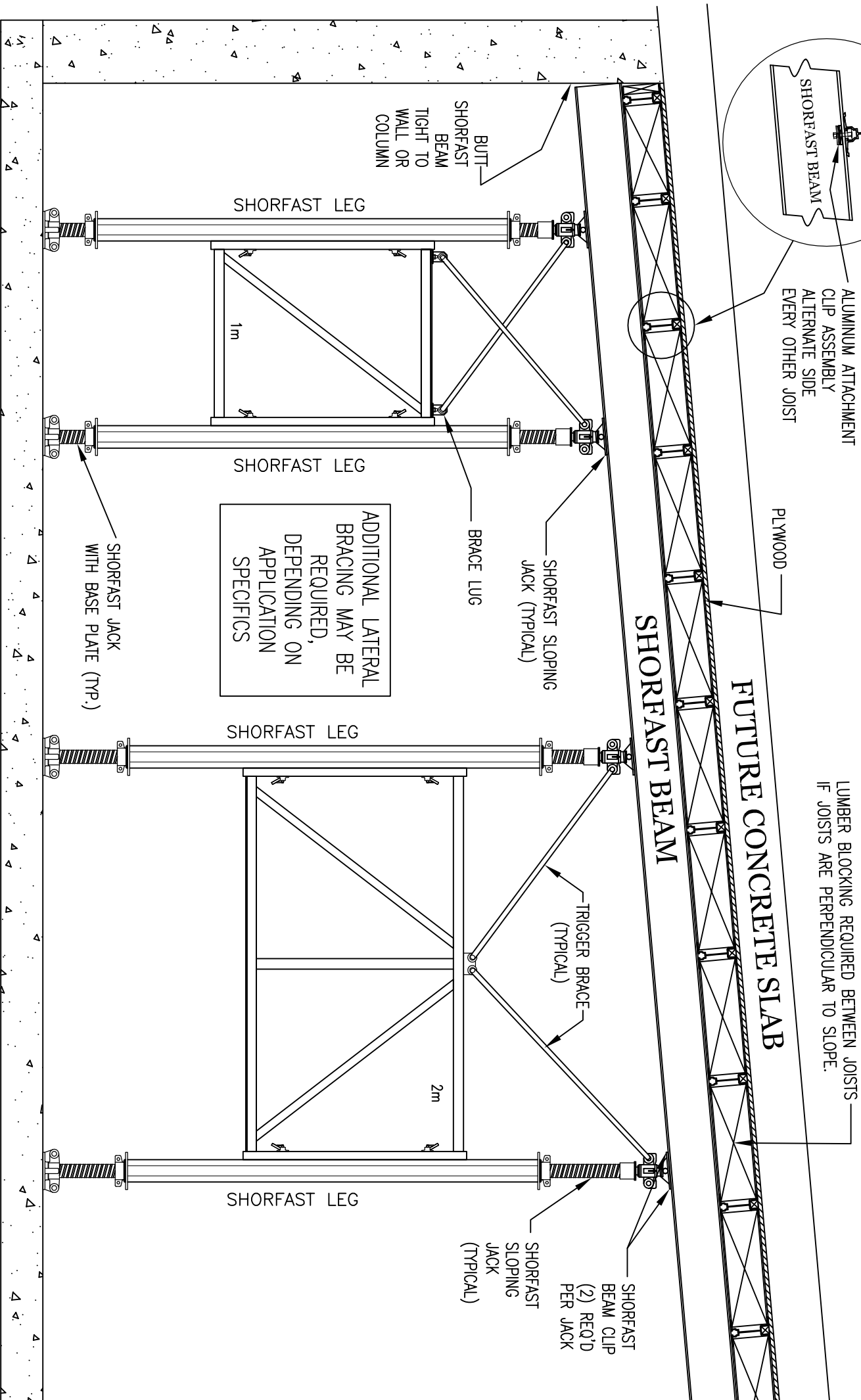
NOTE:
IF DEPTH TO WIDTH RATIO IS 3:1 OR GREATER PROVIDE BRIDGING BETWEEN JOISTS TO PREVENT OVERTURNING / ROTATION.

CLIMBING TOWERS

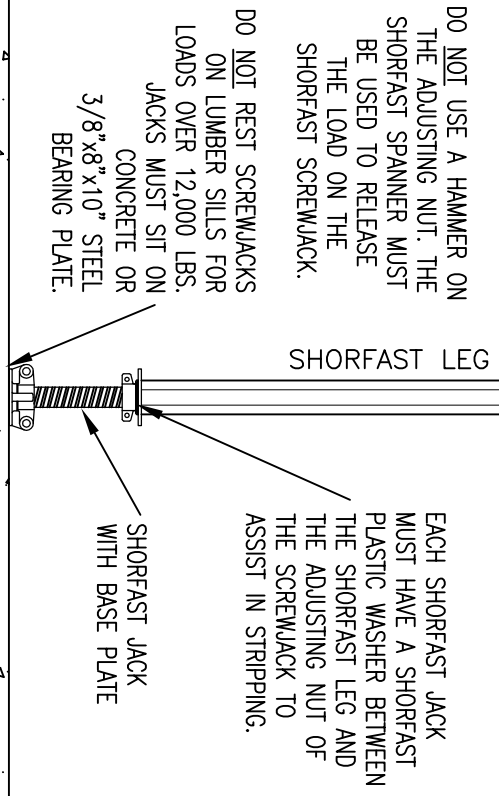


DO NOT USE FRAMES TO CLIMB UP TOWERS!

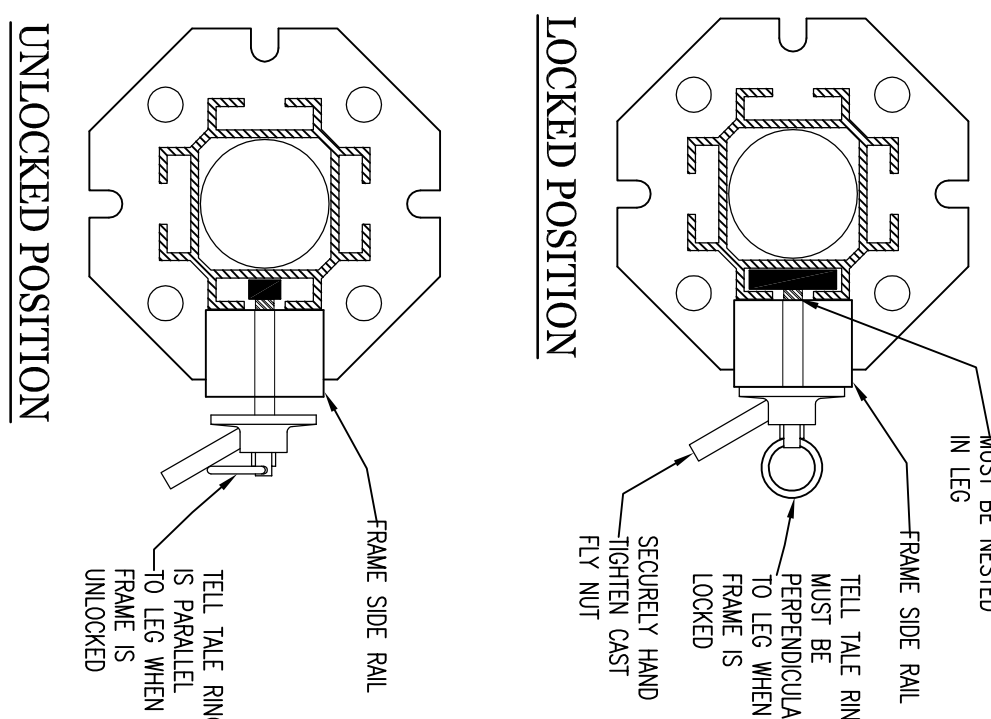
SLOPING SLAB



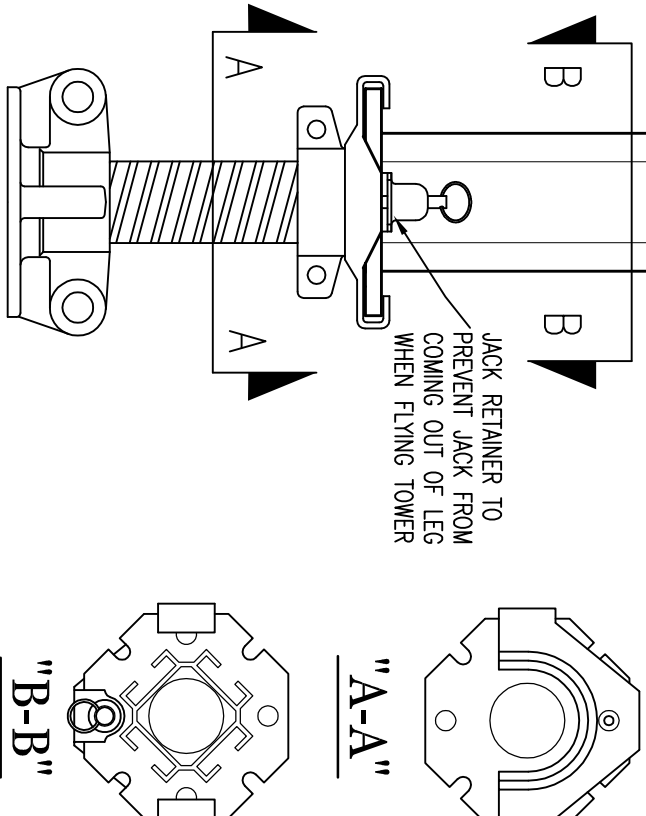
SCREW/JACK INFORMATION



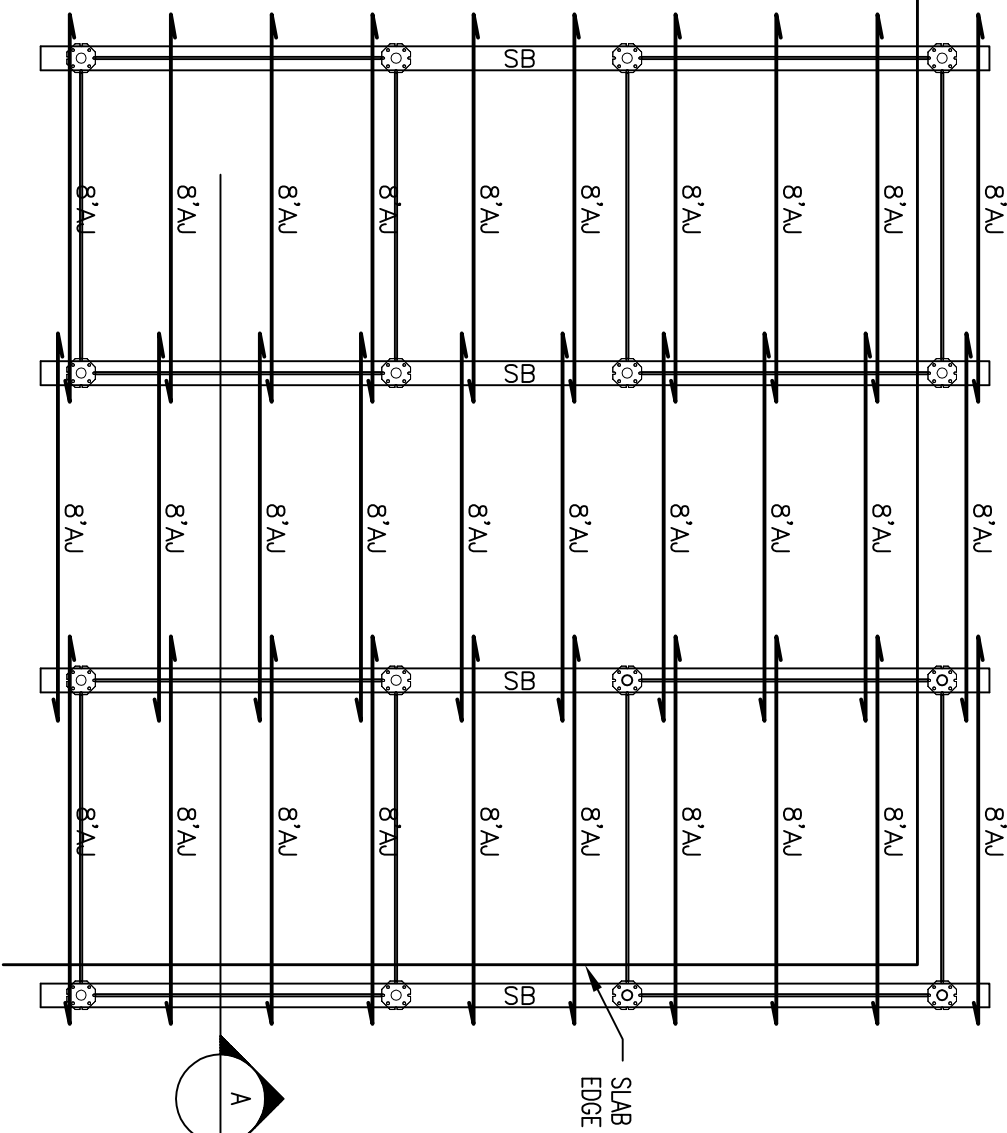
FRAME LOCKING NUT



JACK RETAINER

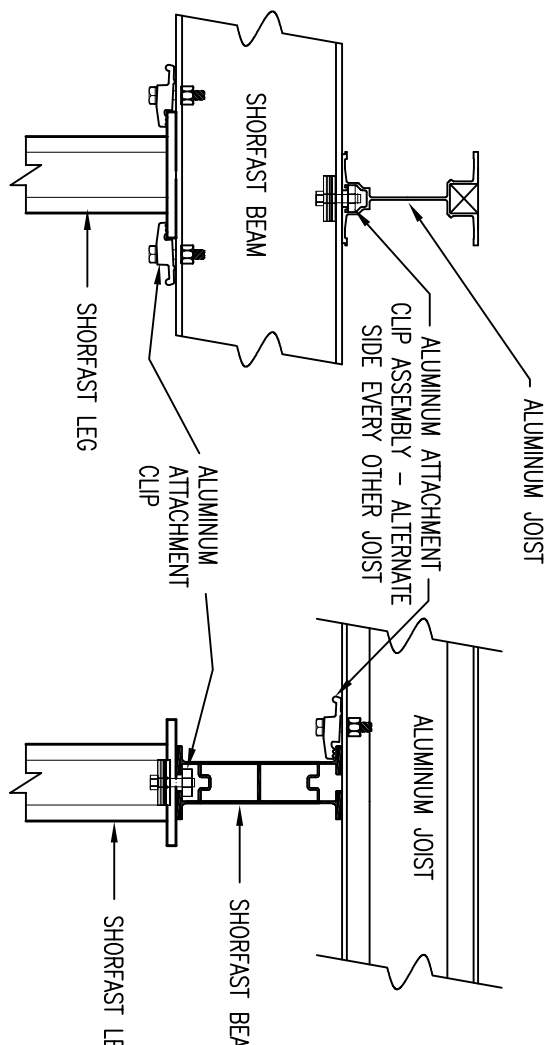


GUARDRAIL SYSTEM



NOTE:
CONTRACTOR HAS THE RESPONSIBILITY TO DESIGN AND BUILD A GUARDRAIL SYSTEM ALONG DECK EDGES IN ACCORDANCE WITH ALL APPLICABLE LOCAL, STATE AND FEDERAL STATUTES AND REGULATIONS.

BEAM / JOIST CONNECTIONS



SHORFAST SAFETY APPLICATIONS

2400 ARTHUR AVENUE
ELK GROVE VILLAGE, IL 60007
PHONE (800) 800-3552
Website: www.DaytonSuperior.com



IMPORTANT: SEE SYMONS APPLICATION DRAWINGS, APPLICATION GUIDES, AND SAFETY SHEETS FOR ADDITIONAL IMPORTANT INFORMATION INCLUDING GENERAL NOTES AND LOCAL BRANCH CONTACT INFORMATION.

DATE	DRAWING NO.	SHEET NO.
Copyright 2015 Symons Corporation ShorFast Safety Sheet Rev. 10-08-14	REP.	