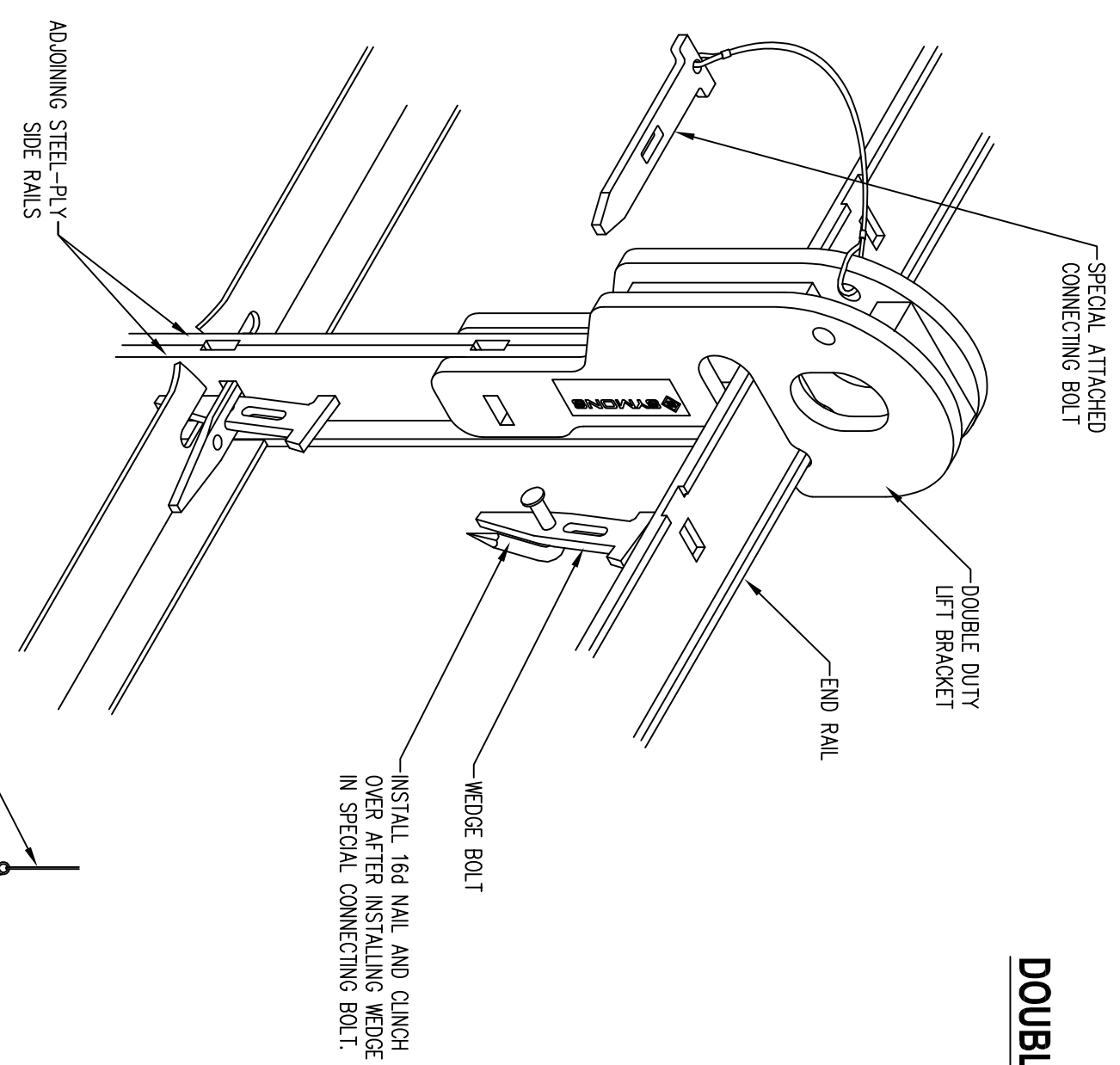


# SYMONS Steel-Ply Gang Form Safety Applications

BY DAYTON SUPERIOR

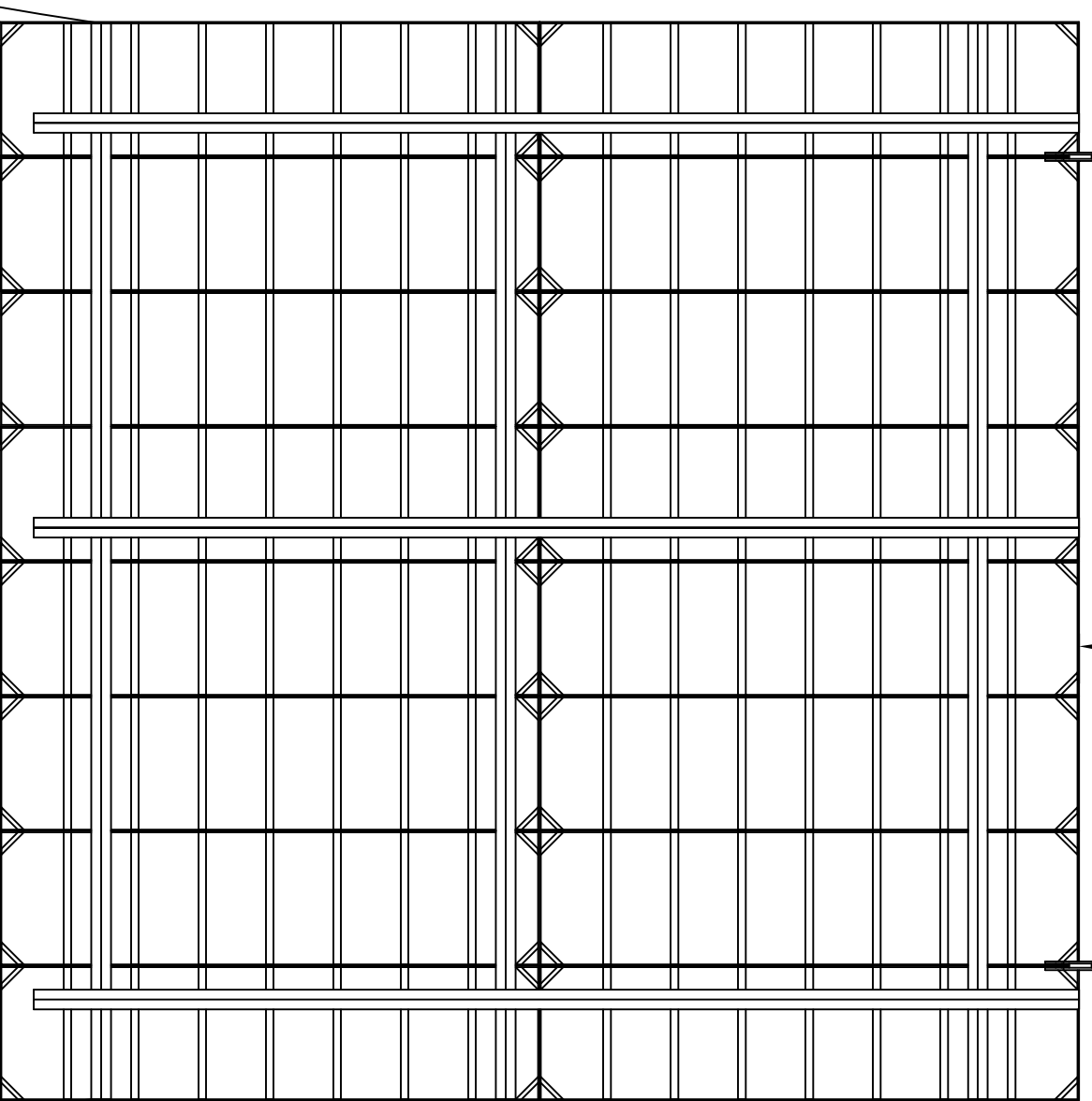
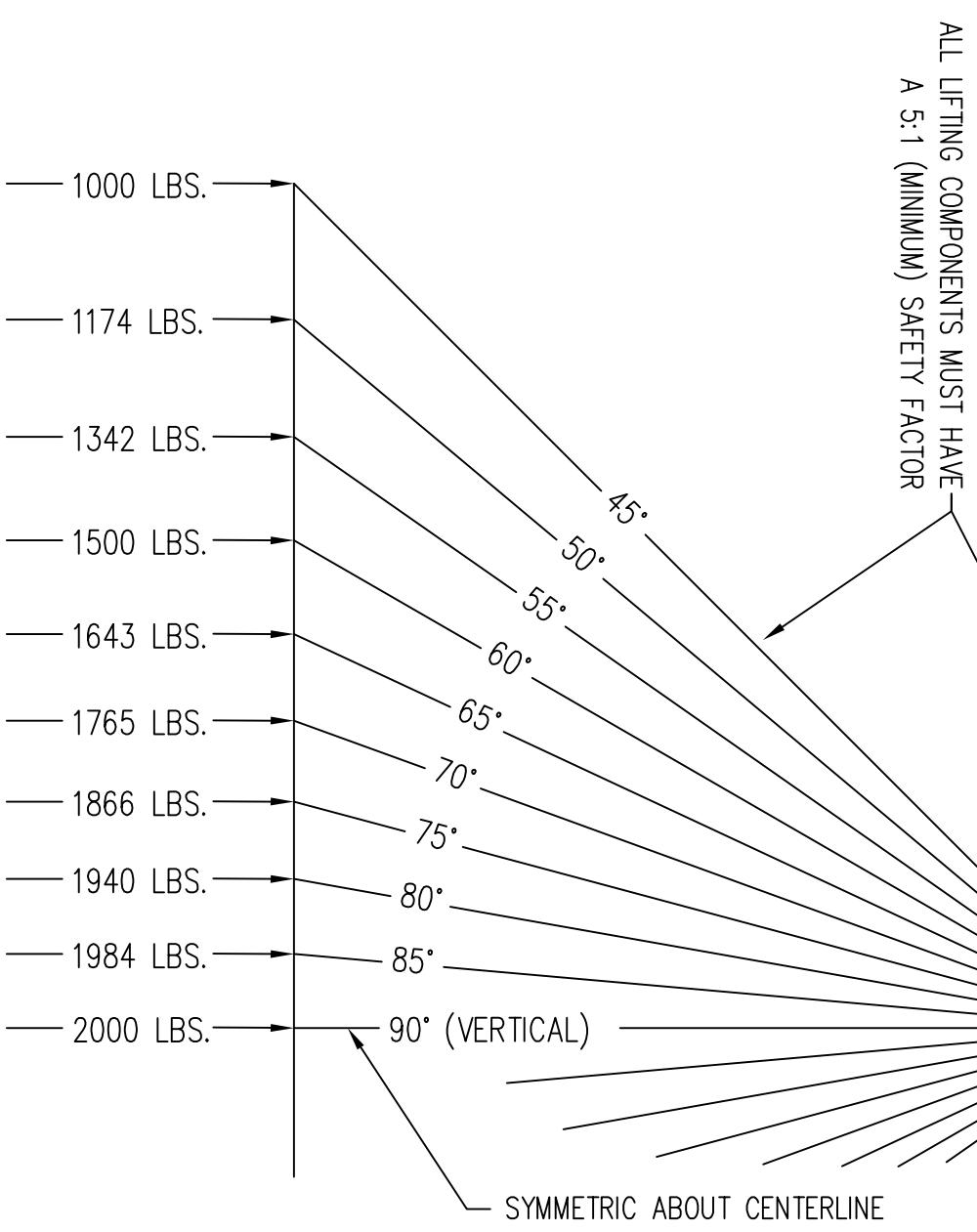
ALL SYMONS COMPONENTS AND ACCESSORIES ARE DESIGNED WITH SAFETY AND PERFORMANCE IN MIND. THE APPLICATION NOTES ON THIS SHEET WILL HELP YOU ACHIEVE A SAFE AND PRODUCTIVE FORMING OPERATION. IT IS RECOMMENDED THAT ALL CONSTRUCTION PERSONNEL, THOROUGHLY FAMILIARIZE THEMSELVES AND COMPLY WITH THE APPLICABLE INDUSTRY STANDARDS AND SAFE PRACTICES ESTABLISHED BY THE AMERICAN CONCRETE INSTITUTE, THE AMERICAN NATIONAL STANDARDS INSTITUTE, THE OCCUPATIONAL SAFETY AND HEALTH ADMINISTRATION, AND THE SCAFFOLDING AND SHORING INSTITUTE.

IMPORTANT: ALL FORMING AND SHORING COMPONENTS MUST BE INSPECTED REGULARLY FOR DAMAGE OR EXCESSIVE WEAR. EQUIPMENT FOUND TO BE DAMAGED OR EXCESSIVELY WORN MUST BE REPLACED IMMEDIATELY.



DOUBLE DUTY LIFT BRACKET

MAXIMUM ALLOWABLE LOAD = 2000 LBS. WHEN LIFTING CABLES ARE AT 45°

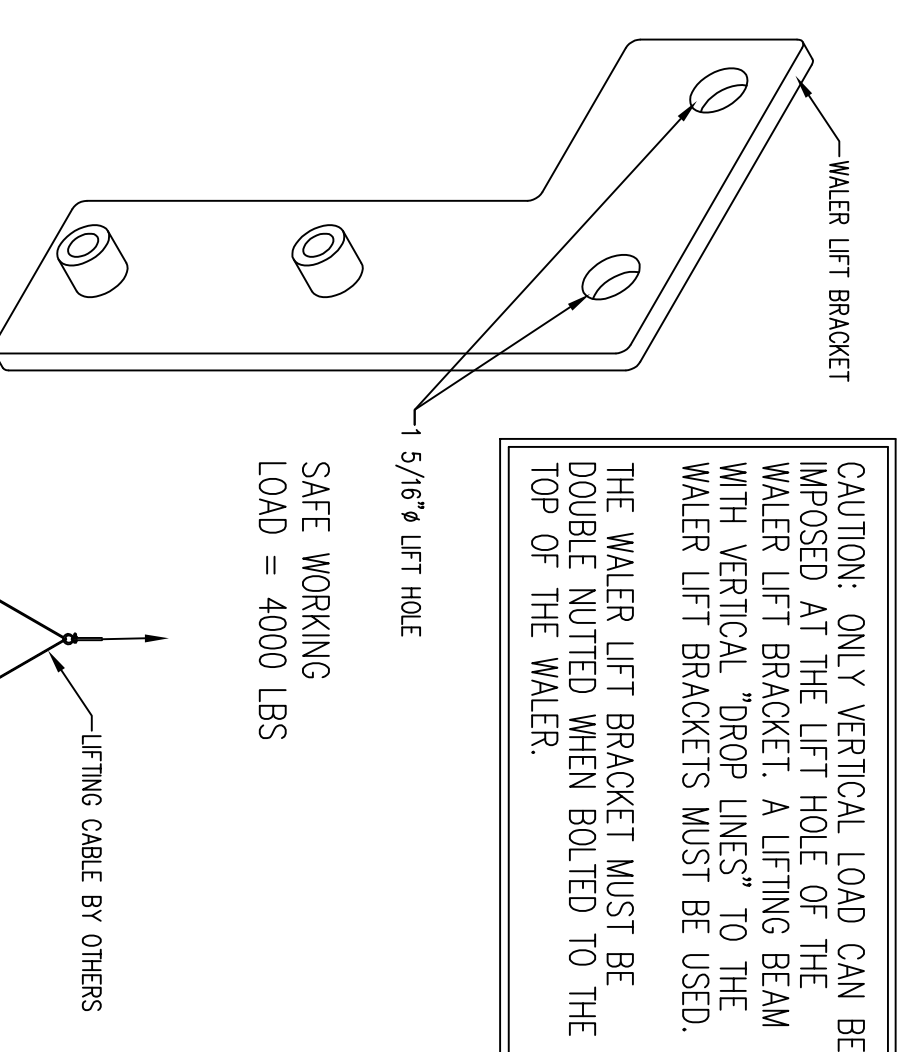


SCHEMATIC OF GANG FORM - REFER TO LAYOUT DRAWINGS FOR ACTUAL CONFIGURATION.

\*\* A MINIMUM OF TWO TAG LINES MUST BE USED TO CONTROL MOVEMENT OF CRANE HANDLED FORMWORK. DO NOT ALLOW PERSONNEL ON OR DIRECTLY UNDER ANY GANG WHILE IT IS BEING MOVED OR SUSPENDED IN THE AIR.

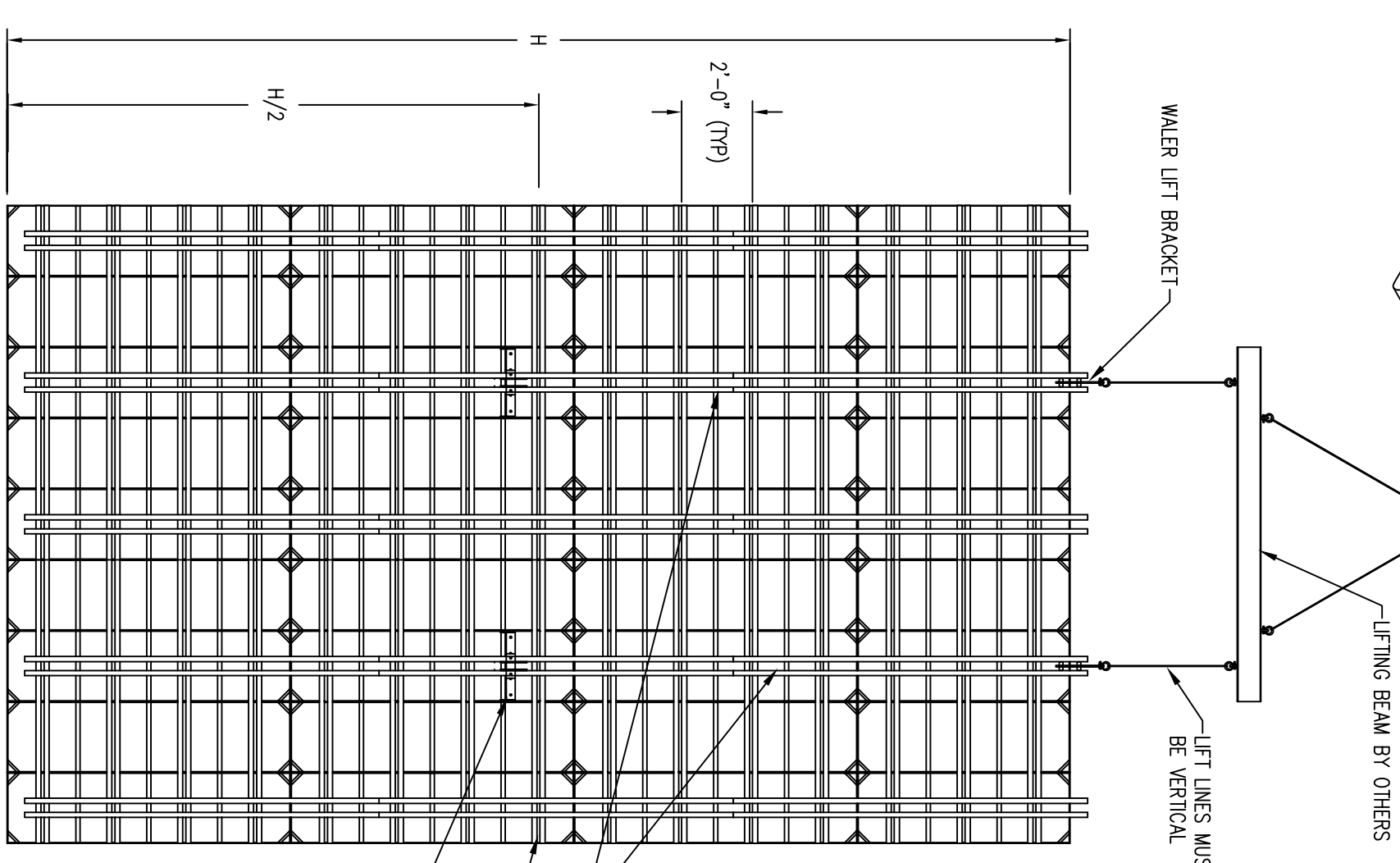
\*\* TAG LINE

\*\* TAG LINE

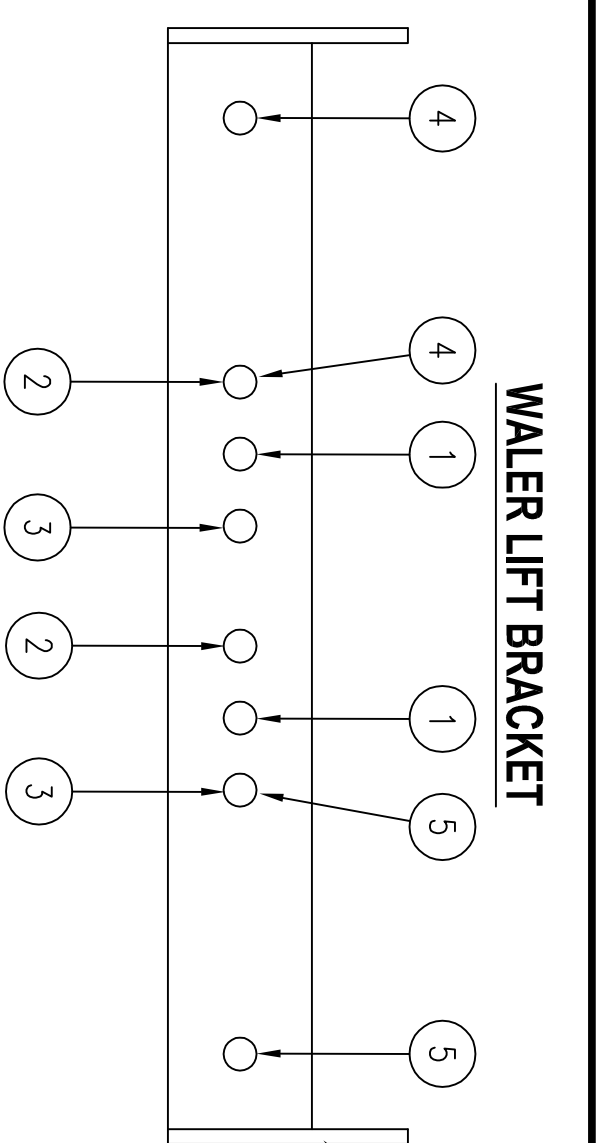


CAUTION: ONLY VERTICAL LOAD CAN BE IMPOSED AT THE LIFT HOLE OF THE WATER LIFT BRACKET. A LIFTING BEAM WITH VERTICAL "DROP LINES" TO THE WATER LIFT BRACKETS MUST BE USED. THE WATER LIFT BRACKET MUST BE DOUBLE NUTTED WHEN BOLTED TO THE TOP OF THE WALKER.

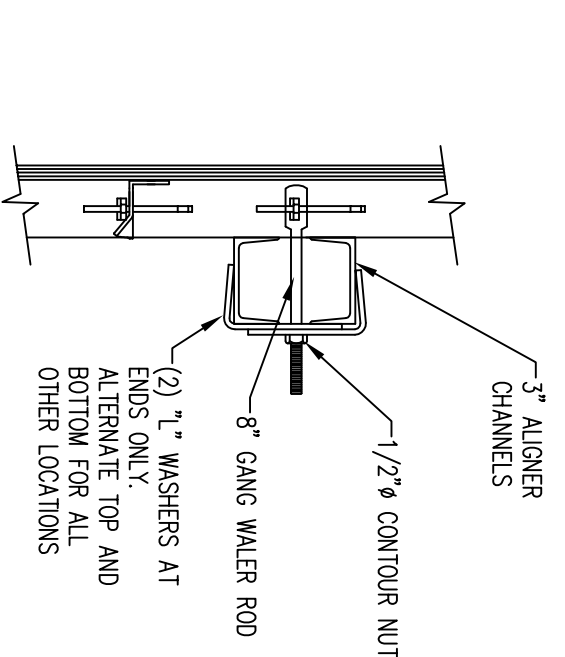
SAFE WORKING LOAD = 4000 LBS



SCHEMATIC OF GANG FORM - REFER TO LAYOUT DRAWINGS FOR ACTUAL CONFIGURATION. H = TOTAL GANG HEIGHT



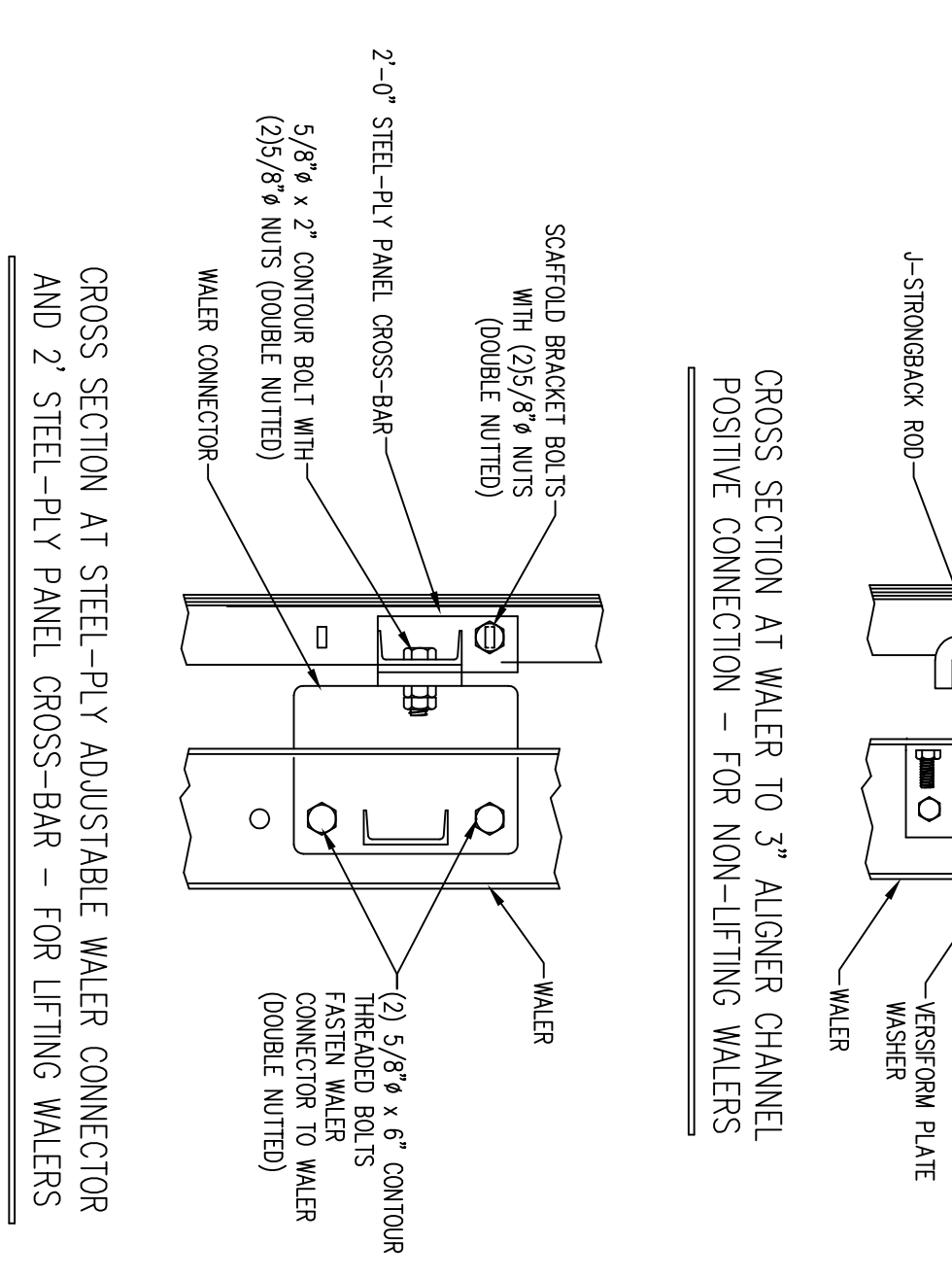
BOLT POSITION (AS SHOWN ON LAYOUT DRAWINGS)	SAFE WORKING LOAD
1-1, 2-2, 3-3	4000 LBS
4-4, 5-5	3600 LBS



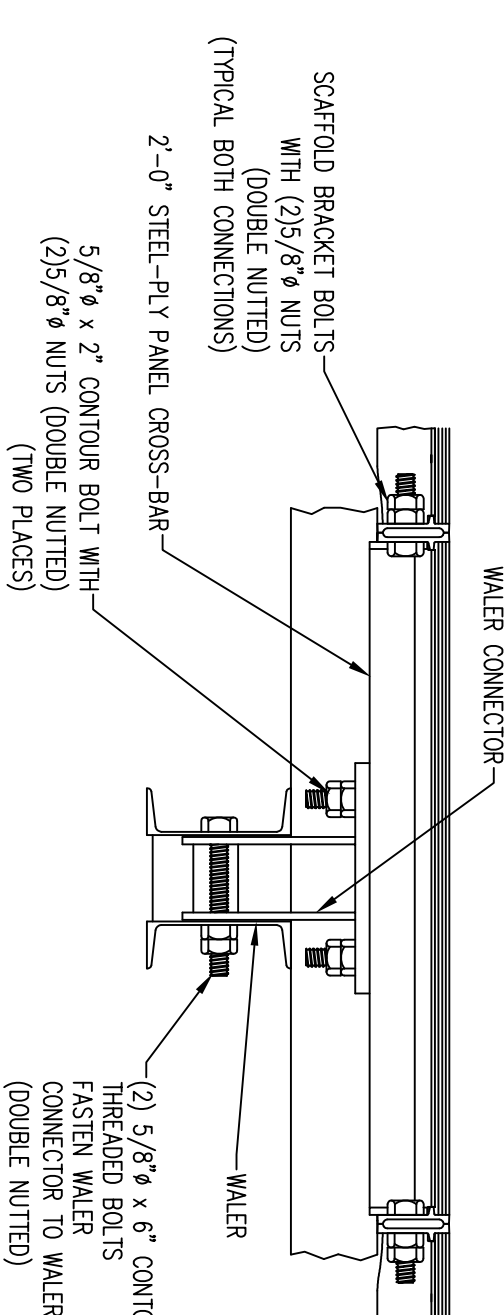
TYPICAL CROSS SECTION AT 3" ALIGNER TO STEEL-PLY CHANNEL CONNECTION

2-0" STEEL-PLY PANEL CROSS-BAR WITH WALKER CONNECTOR (SEE LAYOUT DRAWING FOR QUANTITY AND LOCATION)

A MINIMUM OF TWO TAG LINES MUST BE USED TO CONTROL MOVEMENT OF CRANE HANDLED FORMWORK. DO NOT ALLOW PERSONNEL ON OR DIRECTLY UNDER ANY GANG WHILE IT IS BEING MOVED OR SUSPENDED IN THE AIR.



CROSS SECTION AT WATER TO 3" ALIGNER CHANNEL POSITIVE CONNECTION - FOR NON-LIFTING WALKERS



TOP VIEW AT STEEL-PLY PANEL SIDEWALL CROSS-BAR LOCATION FOR LIFTING WALKERS

SEE "STEEL-PLY SAFETY APPLICATIONS" FOR ADDITIONAL STEEL-PLY SAFETY INFORMATION

IMPORTANT: SEE SYMONS APPLICATION DRAWINGS, APPLICATION GUIDES, AND SAFETY SHEETS FOR ADDITIONAL IMPORTANT INFORMATION, INCLUDING GENERAL NOTES AND LOCAL BRANCH CONTACT INFORMATION.

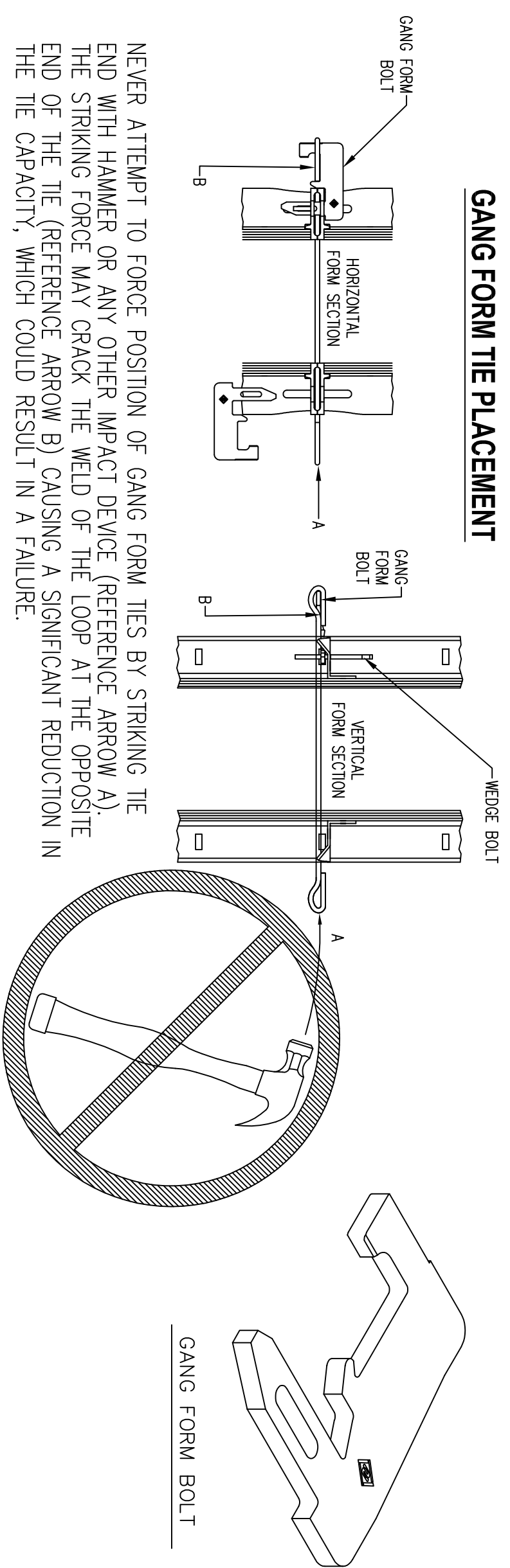
**SYMONS**  
BY DAYTON SUPERIOR

2400 Arbor Avenue  
Eka Grove Village, IL 60007  
1-800-800-7632  
www.DaytonSuperior.com

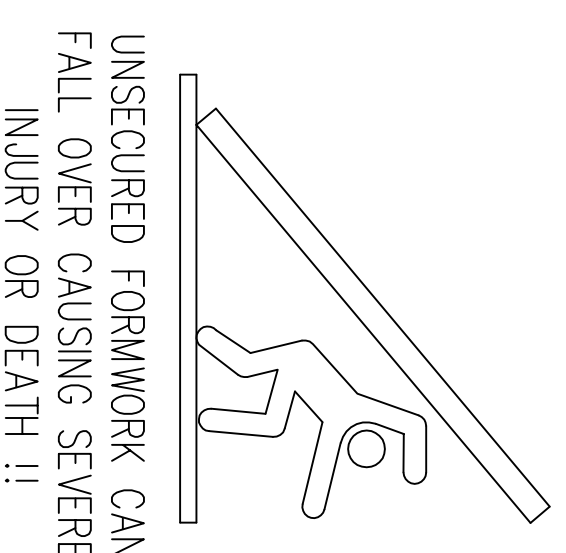
STEEL-PLY GANG FORM SAFETY APPLICATIONS

FOR	DRAWING NO.	SHEET NO.
JOB	REF.	
LOCATION		
DATE		

GANG FORM TIE PLACEMENT



WARNING



- BRACING**
- BRACING MUST BE IN PLACE WHILE SETTING FORMWORK AND REMAIN IN PLACE UNTIL FORMS ARE STRIPPED.
  - CONTRACTOR IS TO INSURE THAT FORMWORK IS PROPERLY BRACED AND STABILIZED AGAINST WIND AND OTHER EXTERNAL FORCES.
- STRIPPING AND REMOVAL OF GANG FORMS**
- ATTACH THE CRANE RIGGING TO THE LIFTING BRACKETS AND SLOWLY TAKE UP THE SLACK IN THE RIGGING.
  - SAFELY REMOVE ALL TIES, BRACES, AND ALIGNERS.
  - BREAK THE BOND BETWEEN THE CONCRETE AND THE FORMS. DO NOT USE THE CRANE TO BREAK THE BOND.
  - MOVE THE GANG FORM TO THE NEXT LOCATION.
  - FULLY BRACE AND SECURE THE FORM BEFORE REMOVING CRANE RIGGING.

IMPORTANT: