

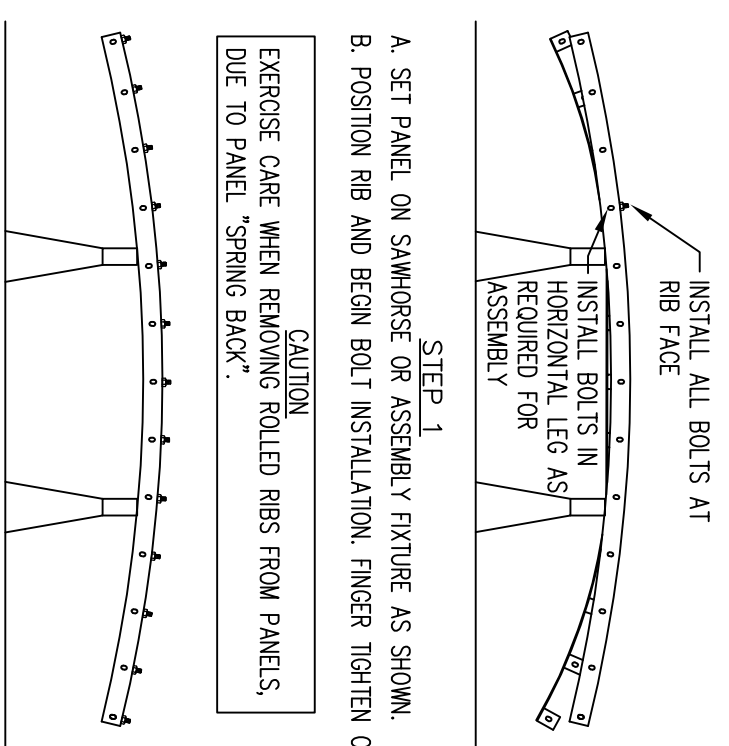
# Flex-Form Safety Applications

ALL SYMONS COMPONENTS AND ACCESSORIES ARE DESIGNED WITH SAFETY AND PERFORMANCE IN MIND. THE APPLICATION NOTES ON THIS SHEET WILL HELP YOU ACHIEVE A SAFE AND PRODUCTIVE FORMING OPERATION. IT IS RECOMMENDED THAT ALL CONSTRUCTION PERSONNEL, THOROUGHLY FAMILIARIZE THEMSELVES AND COMPLY WITH THE APPLICABLE INDUSTRY STANDARDS AND SAFE PRACTICES ESTABLISHED BY THE AMERICAN CONCRETE INSTITUTE, AMERICAN NATIONAL STANDARDS INSTITUTE, THE OCCUPATIONAL SAFETY AND HEALTH ADMINISTRATION, AND THE SCAFFOLDING AND SHORING INSTITUTE.

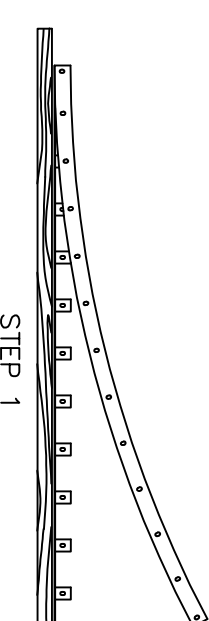
**IMPORTANT:** ALL FORMING AND SHORING COMPONENTS MUST BE INSPECTED REGULARLY FOR DAMAGE OR EXCESSIVE WEAR. EQUIPMENT FOUND TO BE DAMAGED OR EXCESSIVELY WORN MUST BE REPLACED IMMEDIATELY.

## ASSEMBLY

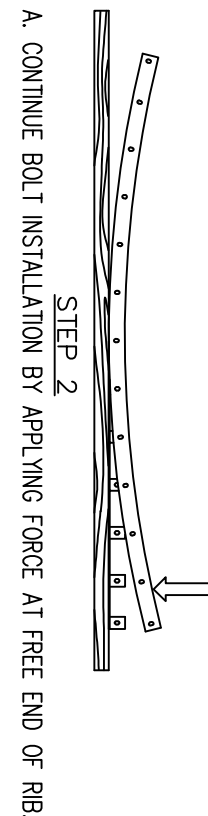
**NOTE:** THIS SECTION DEALS WITH REINSTALLATION OF ROLLED RIBS SHOULD A FIELD CHANGE BE NECESSARY. PANELS ARE SHIPPED WITH ALL RIB FACE BOLTS INSTALLED AND A MAXIMUM NUMBER IN HORIZONTAL LEG WHICH ARE REMOVED FOR STACKING AND FORM ON GRADE.



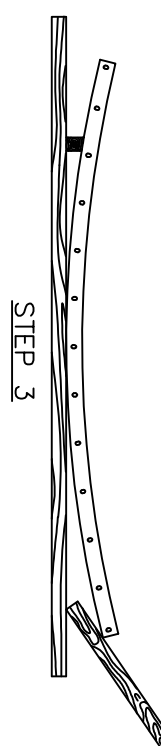
A. COMPLETE INSTALLATION OF BOLTS ARE REQUIRED AT EACH STIFFENER LOCATION.  
B. CHECK ALIGNMENT OF RIBS AT ENDS OF PANEL AND TIGHTEN BOLTS.



A. LAY PANEL SECTION ON WOOD SLEEPERS TO PROTECT SKIN PLATE.  
B. INSTALL BOLTS FROM ONE END OF RIBS, FINGER TIGHTEN.



A. CONTINUE BOLT INSTALLATION BY APPLYING FORCE AT FREE END OF RIB.



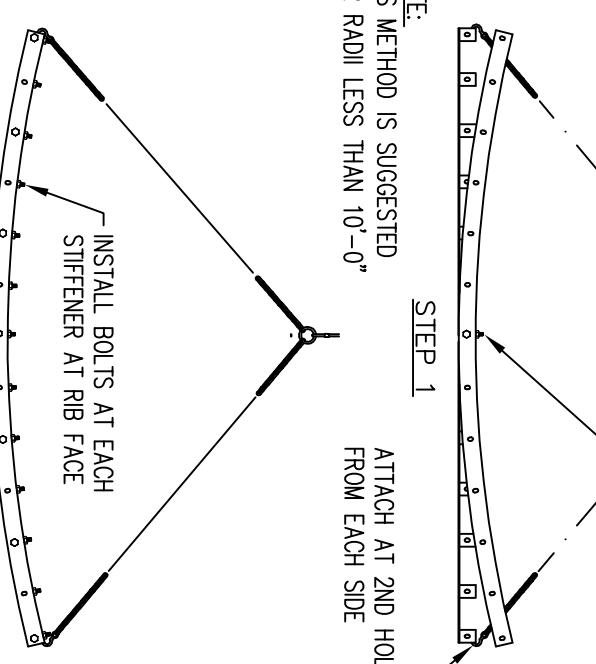
A. FINAL BOLT INSTALLATION MAY REQUIRE RAISING PANEL TO RIB AS SHOWN. DO NOT USE ANY TOOL WHICH MAY DAMAGE SKIN PLATE SURFACE.  
B. REFERENCE OUTSIDE RIB INSTALLATION FOR OTHER NOTES AND RECOMMENDATIONS.

## OUTSIDE RIB INSTALLATION

## INSIDE RIB INSTALLATION

HOOK AND CHOKERS AT EACH END OF PANEL

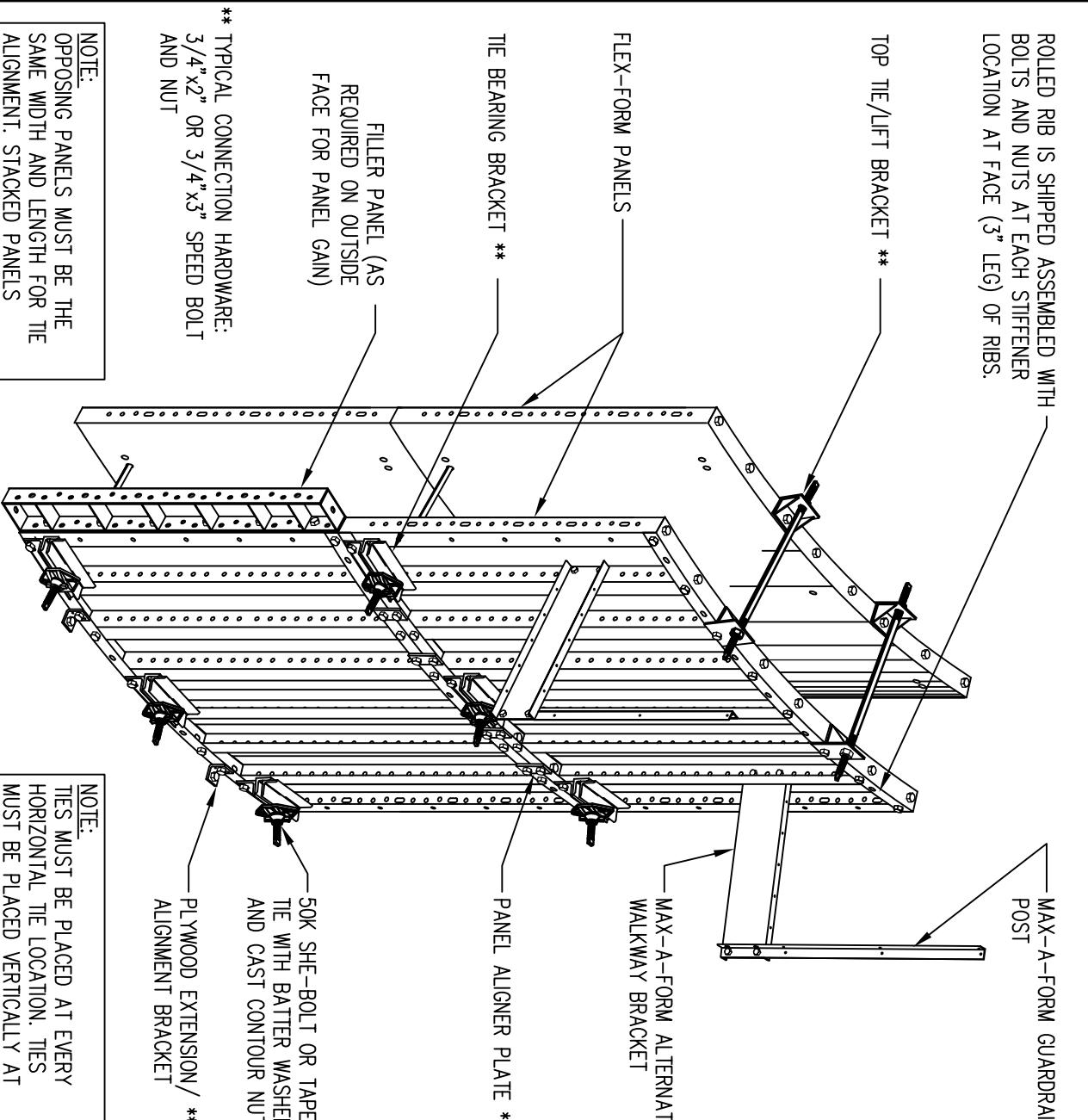
ALIGN AND TIGHTEN SECURELY (CENTER BOLTS ONLY)



THESE BOLTS REQUIRED FOR ASSEMBLY ONLY. REMOVE FOR STACKING AND FORM ON GRADE.

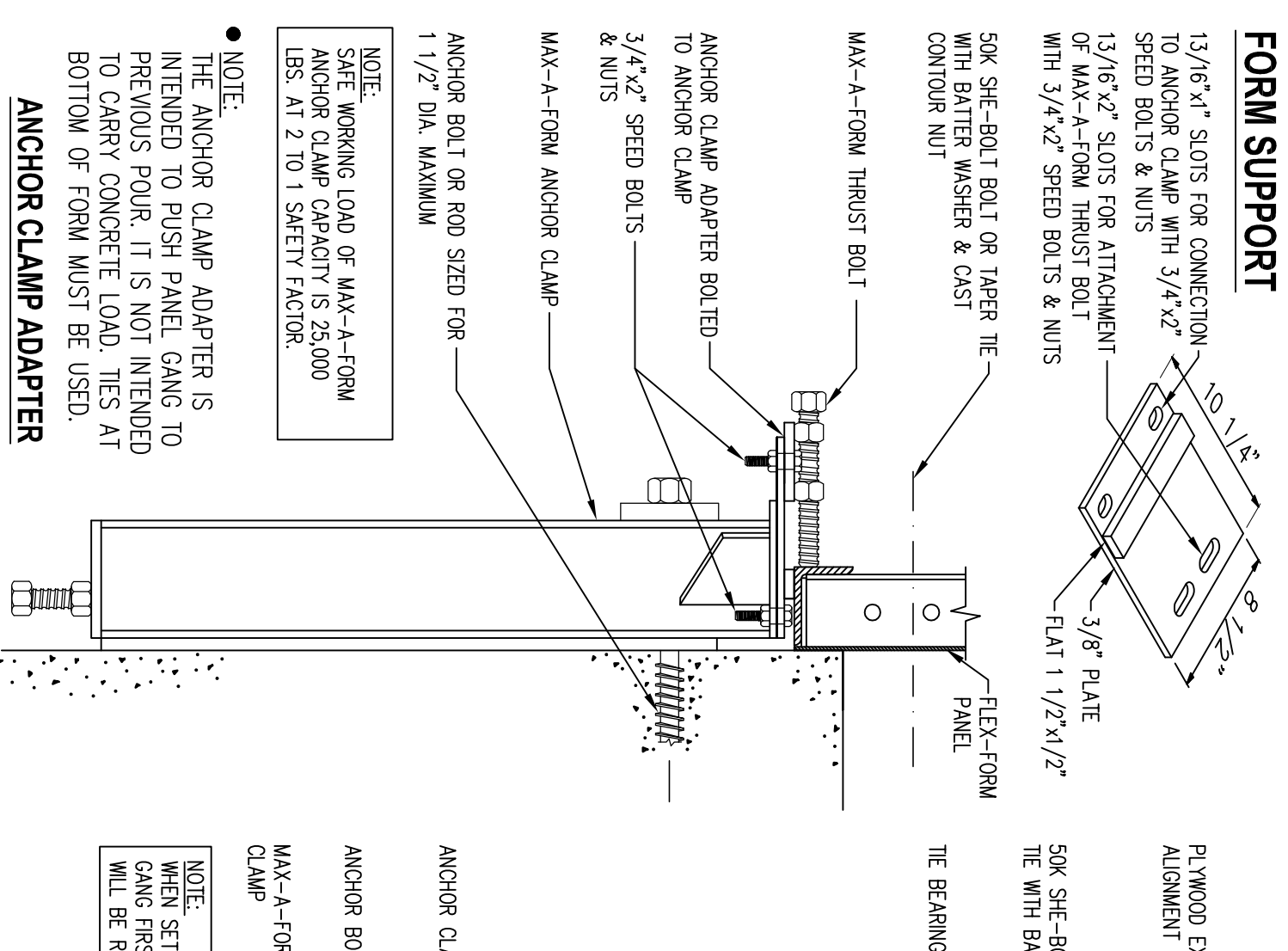
## ALTERNATE RIB INSTALLATION

## SYSTEM NOMENCLATURE



ROLLED RIB IS SHIPPED ASSEMBLED WITH BOLTS AND NUTS AT EACH STIFFENER LOCATION AT FACE (3\"/>

## WALL POUR APPLICATION

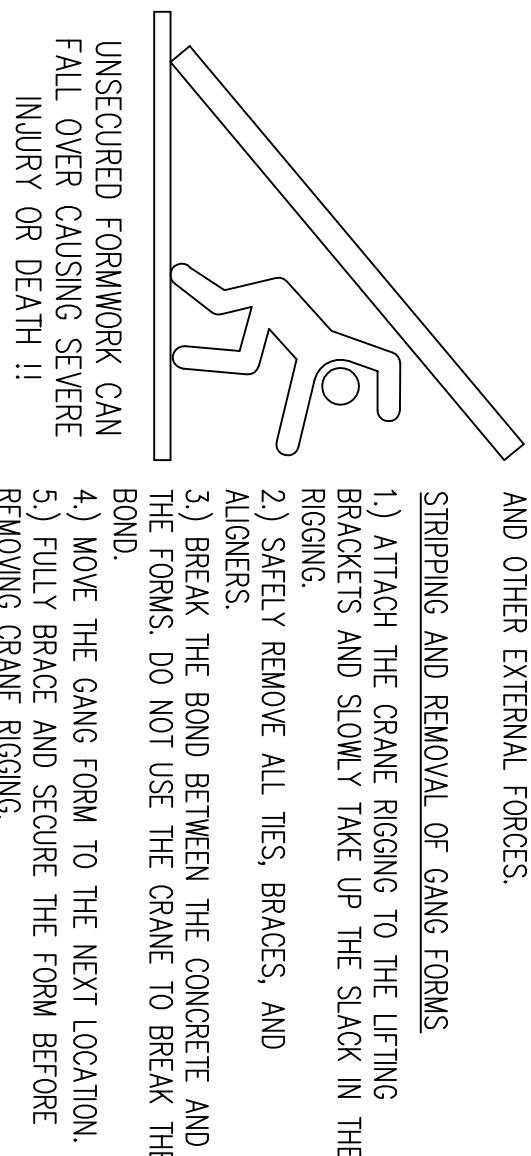


**NOTE:** THE ANCHOR CLAMP ADAPTER IS INTENDED TO PUSH PANEL GANG TO PREVIOUS POUR. IT IS NOT INTENDED TO CARRY CONCRETE LOAD. TIES AT BOTTOM OF FORM MUST BE USED.

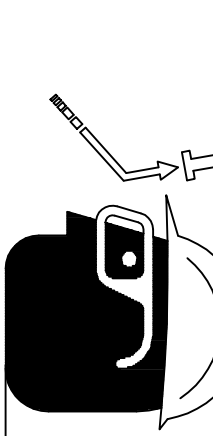
## IMPORTANT:

1) BRACING MUST BE IN PLACE WHILE SETTING FORMWORK AND REMAIN IN PLACE UNTIL FORMS ARE STRIPPED.  
2) CONTRACTOR IS TO INSURE THAT FORMWORK IS PROPERLY BRACED AND STABILIZED AGAINST WIND AND OTHER EXTERNAL FORCES.  
STRIPPING AND REMOVAL OF GANG FORMS  
1) ATTACH THE CRANE RIGGING TO THE LIFTING BRACKETS AND SLOWLY TAKE UP THE SLACK IN THE RIGGING.  
2) SAFELY REMOVE ALL TIES, BRACES, AND ALIGNERS.  
3) BREAK THE BOND BETWEEN THE CONCRETE AND THE FORMS. DO NOT USE THE CRANE TO BREAK THE BOND.  
4) MOVE THE GANG FORM TO THE NEXT LOCATION.  
5) TOLL BRACE AND SECURE THE FORM BEFORE REMOVING CRANE RIGGING.

## WARNING

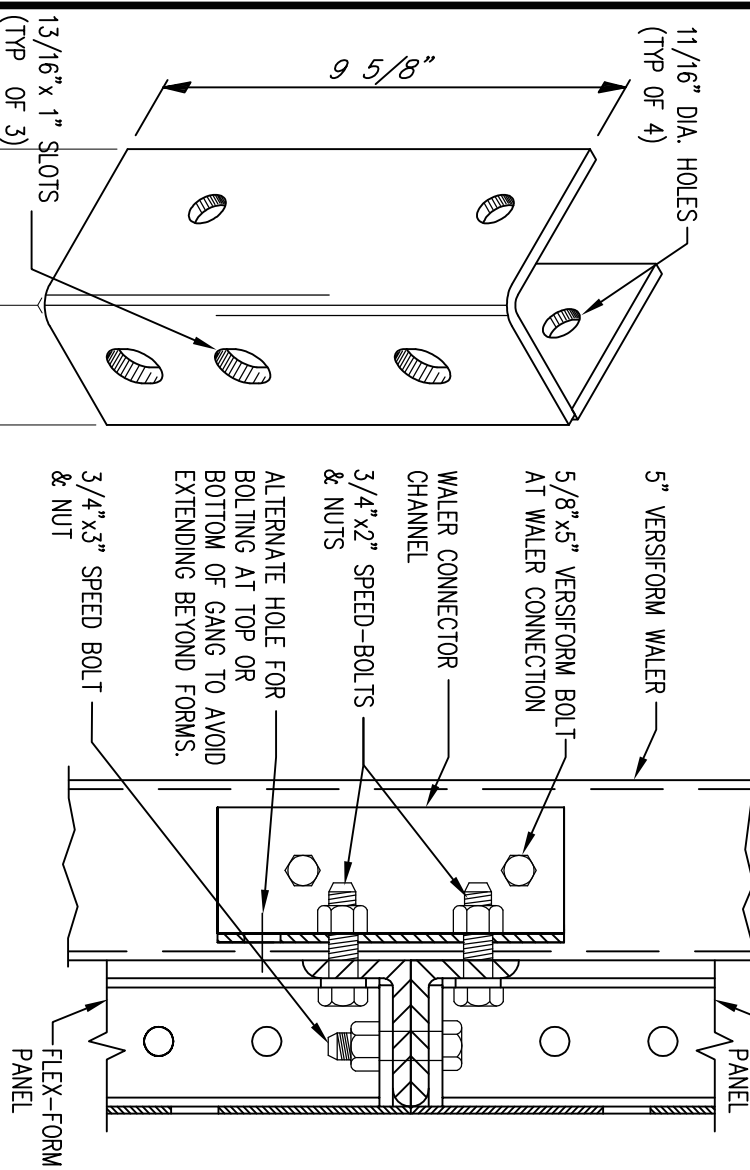


## WEAR EYE AND HEAD PROTECTION

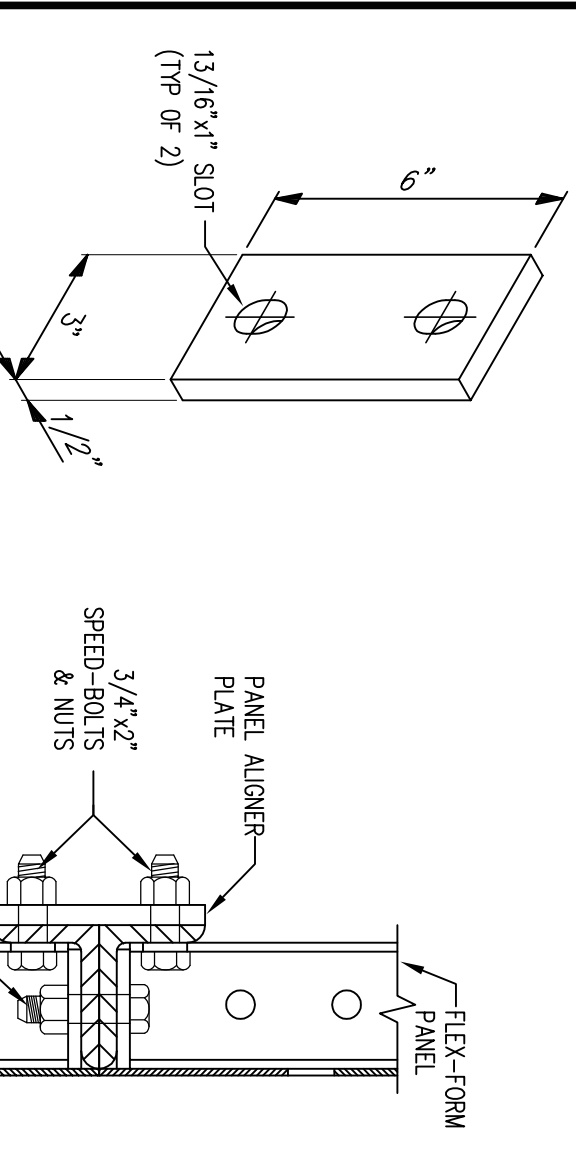


SYMONS RECOMMENDS GLOVES, HARDHATS, SAFETY SHOES, AND SAFETY GLASSES BE WORN DURING ALL FORMING AND POURING OPERATIONS.

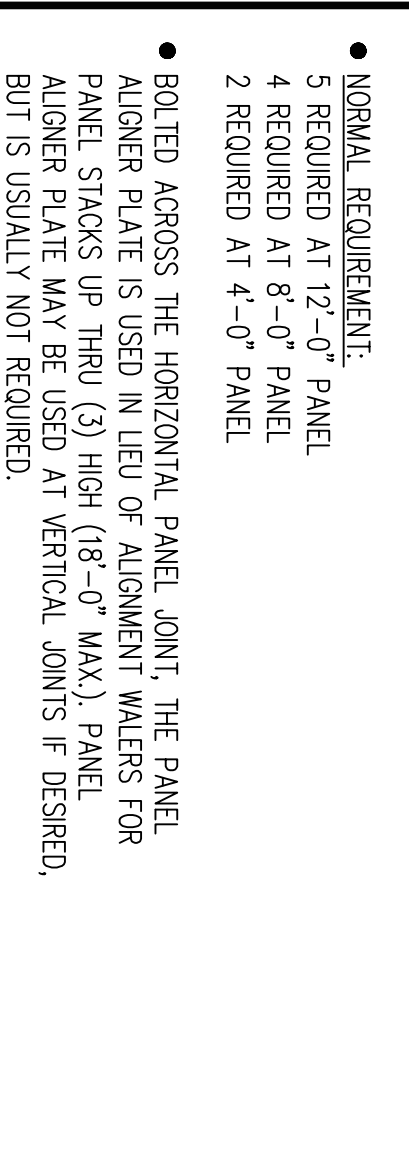
## ALIGNMENT & STRONGBACKS



## WATER CONNECTION CHANNEL

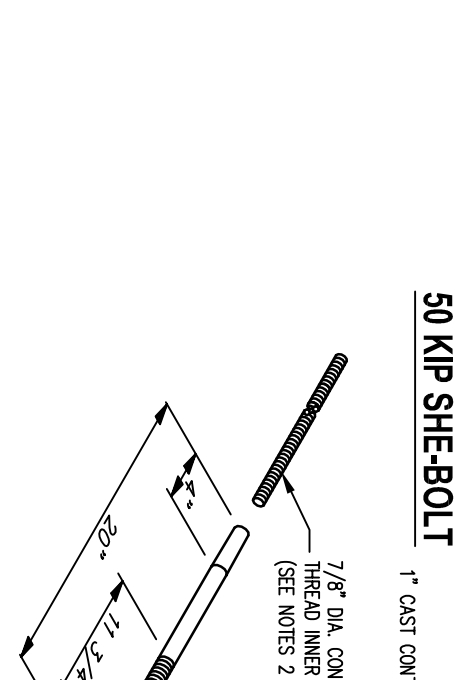


## PANEL ALIGNER PLATE



**NOTE:** TIES MUST BE PLACED AT EVERY HORIZONTAL JOINT LOCATION. TIES MUST BE THE SAME LENGTH FOR JOINT BOLT ALIGNMENT.

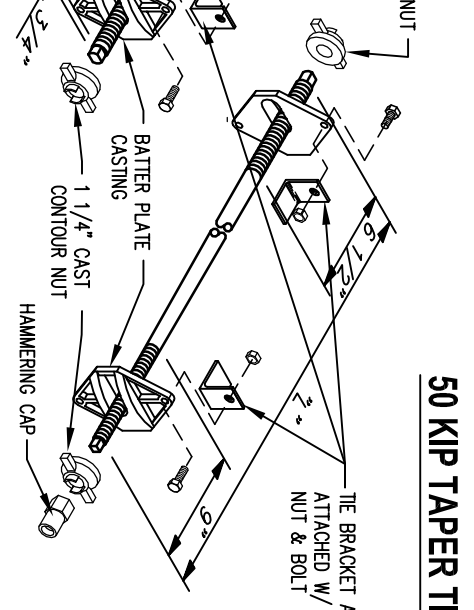
## 50 MP SHE-BOLT



**NOTE:** MAXIMUM ALLOWABLE TIE LOAD = 41 MBS

DESCRIPTION	SIZE	QTY	UNIT	SAFE WORKING LOAD AT TIE
(STD) MAX (MIN) 5/8"	1"	1/2"	50000 LBS	25000 LBS
(STD) MAX (MIN) 5/8"	1 1/4"	1"	60000 LBS	30000 LBS
(STD) MAX (MIN) 5/8"	1 1/2"	1"	60000 LBS	30000 LBS
(STD) MAX (MIN) 5/8"	2"	1"	60000 LBS	30000 LBS
(STD) MAX (MIN) 5/8"	2 1/2"	1"	60000 LBS	30000 LBS
(STD) MAX (MIN) 5/8"	3"	1"	60000 LBS	30000 LBS

## 50 MP TAPER TIE



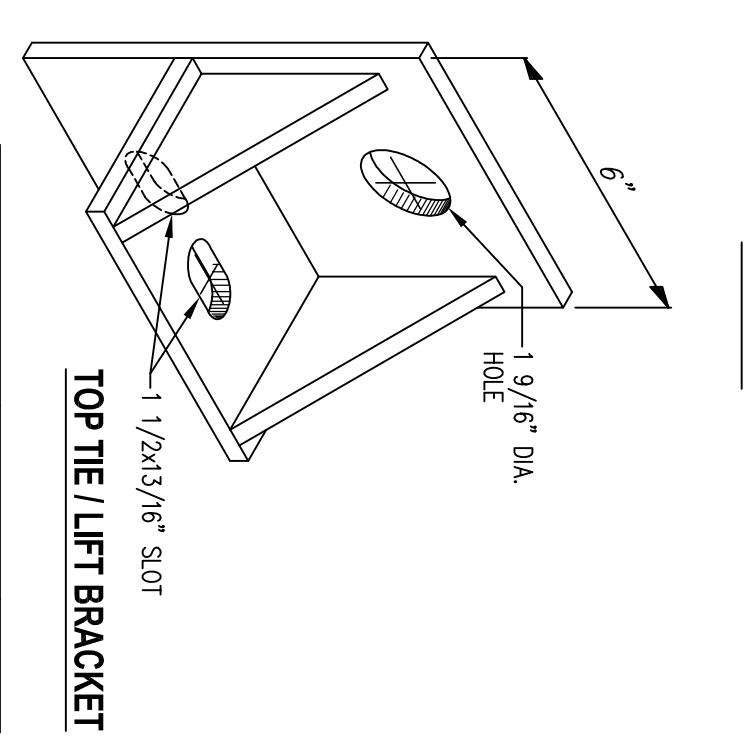
**NOTE:** MAXIMUM ALLOWABLE TIE LOAD = 41 MBS

DESCRIPTION	SIZE	QTY	UNIT	SAFE WORKING LOAD AT TIE
(STD) MAX (MIN) 5/8"	1"	1/2"	50000 LBS	25000 LBS
(STD) MAX (MIN) 5/8"	1 1/4"	1"	60000 LBS	30000 LBS
(STD) MAX (MIN) 5/8"	1 1/2"	1"	60000 LBS	30000 LBS
(STD) MAX (MIN) 5/8"	2"	1"	60000 LBS	30000 LBS
(STD) MAX (MIN) 5/8"	2 1/2"	1"	60000 LBS	30000 LBS
(STD) MAX (MIN) 5/8"	3"	1"	60000 LBS	30000 LBS

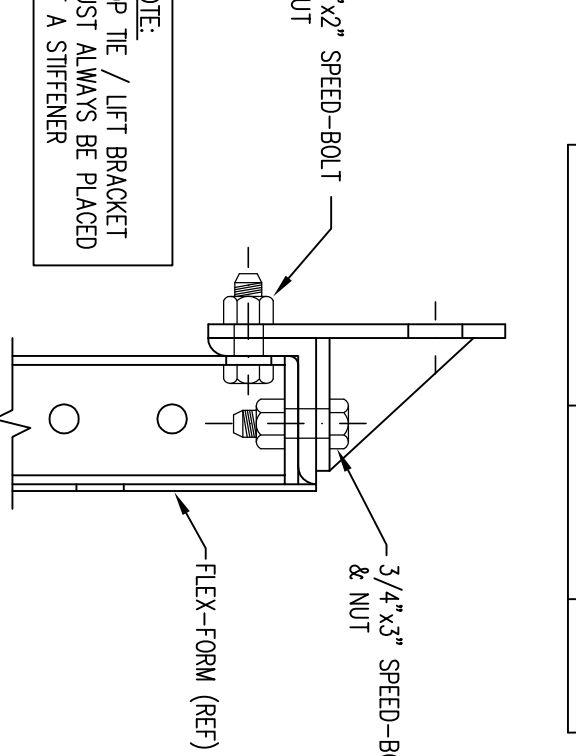
## SPECIFIC TIE NOTES

A) WHEN USING TAPER TIES, IT IS VERY IMPORTANT THAT THE TIE NUTS ARE CONSISTENTLY FITTED SNUG. ANY TIGHTENING OF THE TIE NUTS BY THE CONTRACTOR WILL CAUSE A LOOSENING OF WALL SPREADERS. IT IS RECOMMENDED TO AID IN MAINTAINING FORM SPACING BOTH DURING ERECTION AND POUR PROGRESS. B) TAPER TIES MUST BE ADEQUATELY LIBERATED TO AID IN STRIPPING.

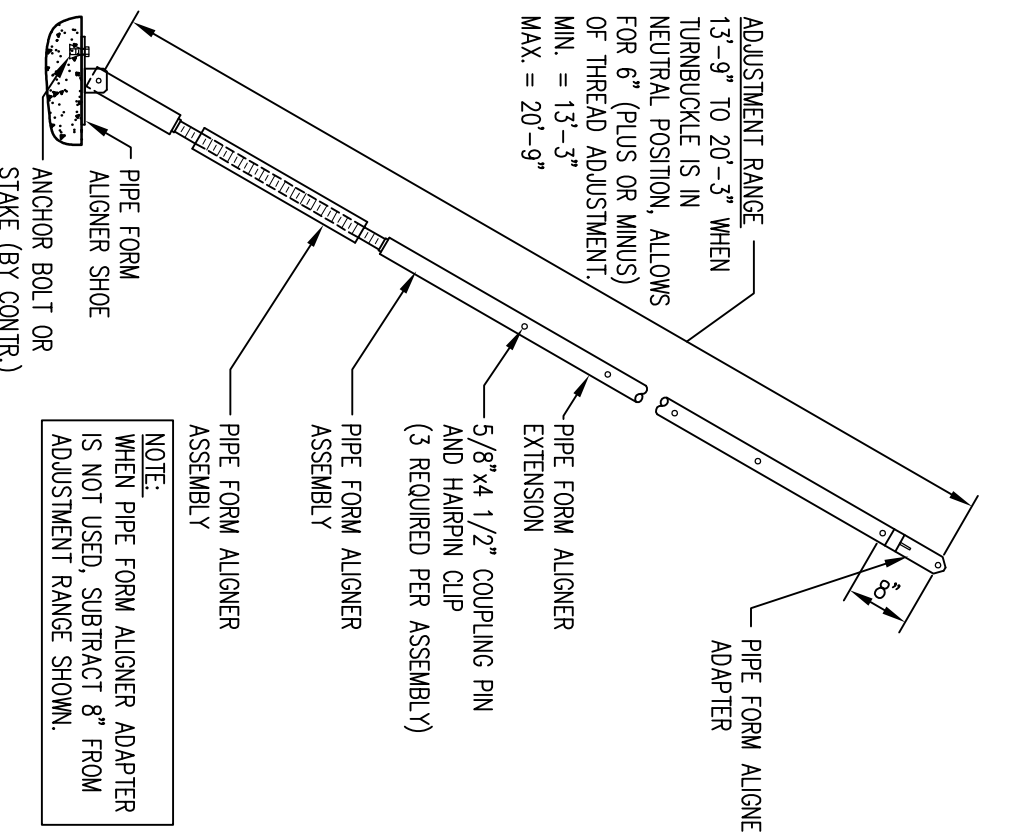
## LIFTING



FUNCTION	SAFE WORKING LOAD	SAFETY FACTOR
USED AS LIFT BRACKET (LOAD VERTICAL)	4000 LBS	5 TO 1
USED AS TOP TIE (LOAD HORIZONTAL)	6000 LBS	2 TO 1



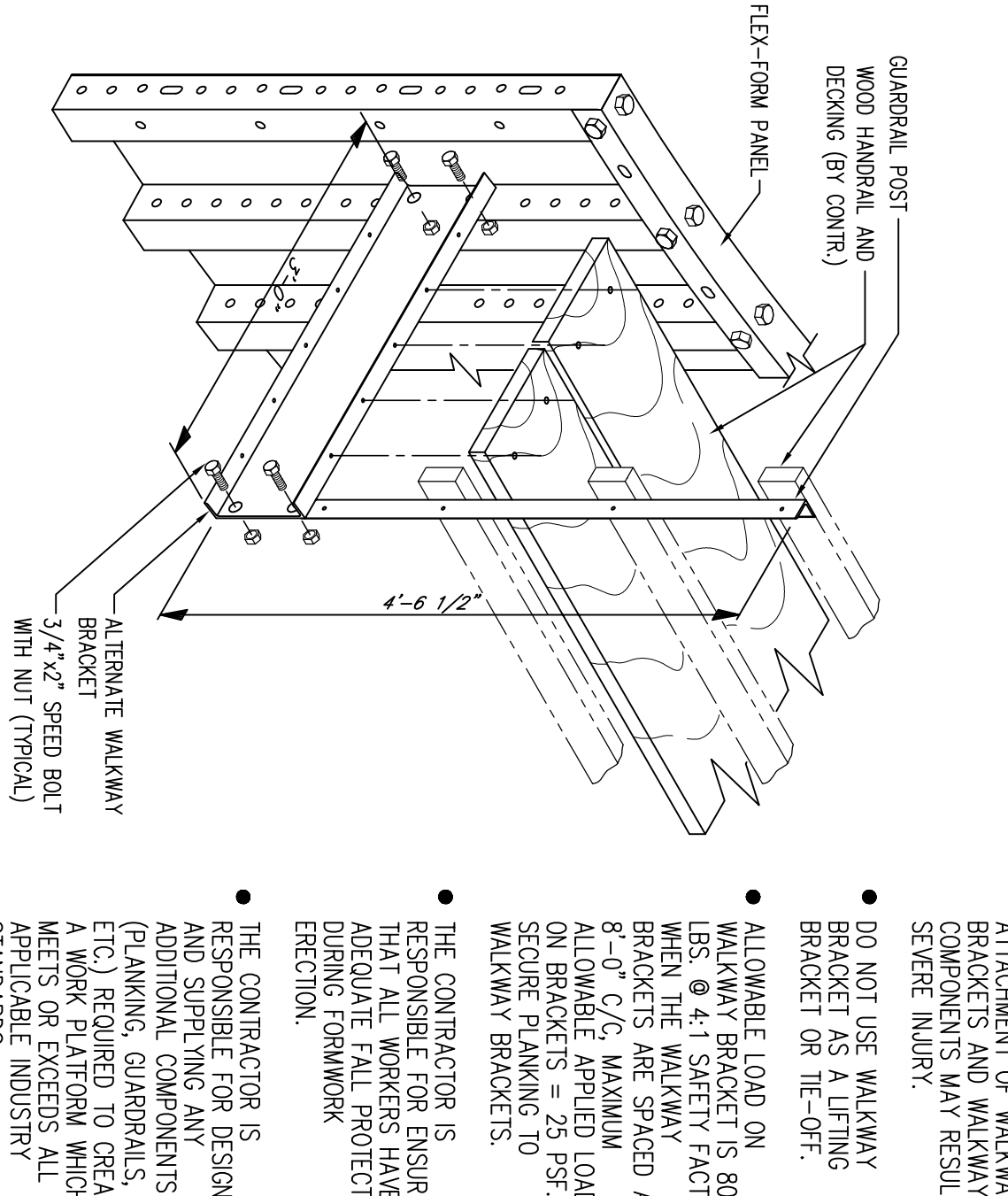
## PLYWOOD EXTENSION APPLICATION



## PIPE FORM ALIGNER

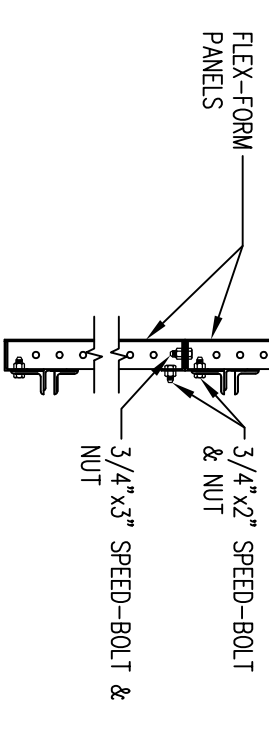
TO BE USED FOR THE ALIGNMENT OF WALL FORMS ONLY

## WALKWAY BRACKETS



- WARNING - UNPROPER USE OF WALKWAY BRACKETS AND WALKWAY COMPONENTS MAY RESULT IN SEVERE INJURY.
- DO NOT USE WALKWAY BRACKET AS A LIFTING BRACKET OR THE OFF.
- ALLOWABLE LOAD ON WALKWAY BRACKET IS 800 LBS @ 4:1 SAFETY FACTOR. WHEN THE WALKWAY BRACKETS ARE SPACED AT 8'-0\"/>
- THE CONTRACTOR IS RESPONSIBLE FOR ENSURING THAT ALL WORKERS HAVE ADEQUATE FALL PROTECTION DURING FORMWORK ERECTION.
- THE CONTRACTOR IS RESPONSIBLE FOR DESIGNING AND SUPPLYING ANY ADDITIONAL COMPONENTS (PLANING, GUARDRAILS, ETC.) REQUIRED TO CREATE A WORK PLATFORM WHICH MEETS ALL APPLICABLE INDUSTRY STANDARDS.

## LIFTING WITH TOP TE/LIFT BRACKET



**NOTE:** WHEN LIFTING GANGED SECTIONS FROM A SINGLE POSITION, EXTERNAL WATER ARE REQUIRED TO CARRY THE BENDING MOMENT ON 20'-0\"/>

2400 ARTHUR AVENUE  
ELK GROVE VILLAGE, IL 60007  
PHONE (800) 800-1952  
Website: www.DaytonSuperior.com

## FLEX-FORM SAFETY APPLICATIONS

FOR	JOB	LOCATION	DRAWING NO.	SHEET NO.
DATE				
REF.				

**IMPORTANT:** SEE SYMONS APPLICATION DRAWINGS, APPLICATION GUIDES AND SAFETY SHEETS FOR ADDITIONAL IMPORTANT INFORMATION, INCLUDING GENERAL NOTES AND LOCAL BRANCH CONTACT INFORMATION.

Copyright 2008, Symons Corporation  
FlexForm Safety Sheets Rev. 10-14-14