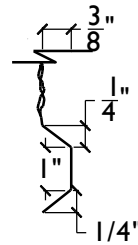
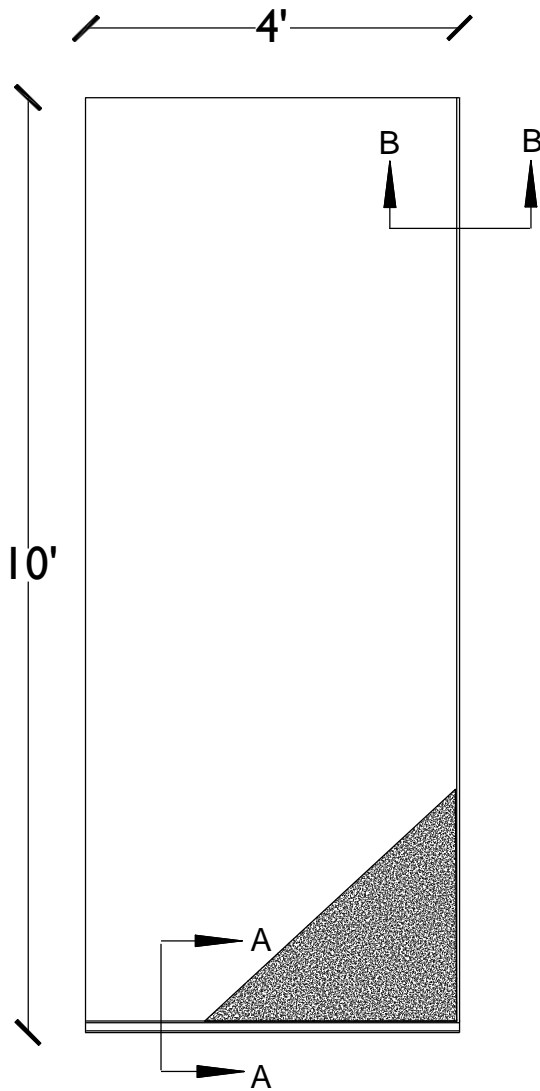
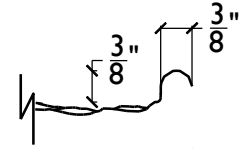


SKIP TROWEL STUCCO



SECTION A - A



SECTION B - B

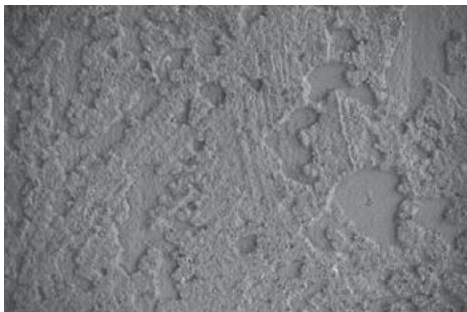
General Information:

The Styrene and ABS form liners are an economical solution for providing architectural pattern reproductions. The Styrene plastic formliner is a perfect alternative for single use applications which costs less than other liners. The ABS plastic formliner exhibits good impact resistance and excellent overall performance. Its reuse factor is 10, subject to pattern configuration, proper handling and jobsite configurations.

Care and Handling:

To protect from thermal deformation, form liners should not be exposed to temperatures above 140°F (60°C). To avoid discoloration from sunlight exposure, form liners should be covered with a tarpaulin when not in use. This helps prolong the life of the material and keeps the material clean.

Form Liners are subject to thermal expansion and contraction +/- 1/8" @ 70°F. Keep away from steam, acids, and certain fuels.



Styrene	ABS
Product Code #	Product Code #
F70392	F70356
Uses	Uses
1	Up to 10
Material Thickness	Material Thickness
.070	.070
Standard Dimensions	Standard Dimensions
4' x 10'	4' x 10'
Color	Color
White	Gray