



**Rental Rework, Inspection, Maintenance, and Repair Procedure for Universal Swift-Lifting
Eye Hardware (P-50)**

1.0 Scope

- 1.1 This document defines the procedure for plant inspection and maintenance for products returning from rental



2.0 Purpose

- 2.1 To receive and inspect all new and returning product to ensure that all units entering the Dayton Superior rental fleet inventory meet design specifications and are functional.
- 2.2 To check for worn or damaged parts
- 2.3 To establish preventive maintenance control and maintain historical records for maintenance activity.

3.0 Procedure

- 3.1 Inspect all lifting eyes after each return from field.
- 3.2 Check for evidence of heat applications. If evidence of heat application is present, scrap unit.
- 3.3 The upper limit of Dimension "H" and the lower limit of Dimensions "M", "B", and "DIA" are shown above. If either of these dimensions are exceeded, the unit must be removed from service and destroyed.
- 3.4 Check for bent or twisted bails. The bail must be allowed to rotate freely in all directions. Do not attempt to straighten. Discard units with bent or twisted bails.
- 3.5 Inspect bail for cracks and welds for cracks.
- 3.6 No repairs to SL Lifting Body or Arm are permitted



**DAYTON
SUPERIOR**

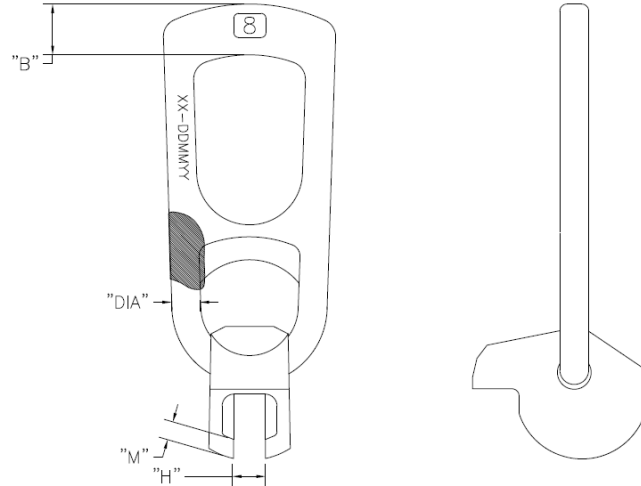
Quality Control Document

No. **QS-P50 Rental**

Revision:
E

Issue Date:
June 16, 2000

Rev. Date:
April 11, 2018



Rated Load Tons	Load Range Tons	"H" Maximum Width	"M" Minimum Thickness	"B" Minimum Thickness	"DIA" Minimum Diameter
1	1-1.3	0.562	0.217	.673	.448
2	1.5-2.5	0.759	0.236	.885	.523
4	3-5	1.034	0.315	1.311	.725
8	6-10	1.310	0.472	1.772	1.046
20	12-20	1.861	0.709	2.205	1.417

4.0 Proof Load Testing and Serialization:

- 4.1 All units must be proof loaded and serialized.
- 4.2 Any pre-existing units that have not been serialized will be recovered, load tested, inspected, and serialized.
- 4.3 If the unit has been previously serialized, review records upon return from customer to determine the date of the last load test and post load test inspection. If the test was performed more than 2 years prior, return the unit to an authorized facility for load test and inspection.
- 4.4 Stamp Hardware or attach proof load tag to show when unit was tested.
- 4.5 Document proof load test and inspection into log/database/etc.
- 4.6 Return unit to service.

5.0 Documentation

- 5.1 Locate Serial Number (XX-XXXX-XXX) on part. Log with repairs and/or comments on the Lift/Accessory Rental Repair Log.



**DAYTON
SUPERIOR**

Quality Control Document

No. **QS-P50 Rental**

Revision:
E

Issue Date:
June 16, 2000

Rev. Date:
April 11, 2018

6.0 References

6.1 Dayton Superior Precast Handbook

6.2 Product Drawing P-P50-01 P50 Universal Lifting Eye for SL Anchor

6.3 See DSC Website for latest revision.

7.0 Revision History

Rev	Rev Date	Reason	ECR#
A	10/31/09	Initial Issue in new format	R2788
B	9/30/12	Added Loop and Bail Checks	R3916
C	9/13/13	Added Proof Load and Serialization Requirements	R4658
D	5/6/15	Added Photo, changed wording for clarity. Updated allowable wear table for H Dimension	R5837
E	4/11/18	Added dimensions for 20 Ton Units to Chart	R7476