



## COST SAVINGS AND JOB SOLUTIONS WITH SYMONS MAX-A-FORM® STS

*Symons Forming continues to bring the Power of Red to self-spanning applications on bridge caps throughout North America with the Max-A-Form STS system.*

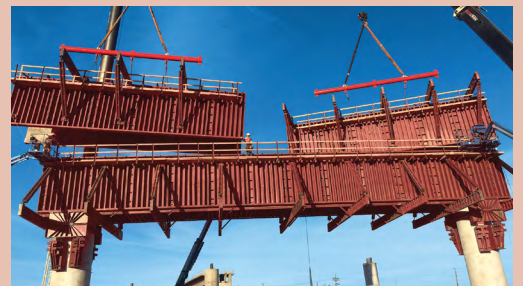
In addition, the STS panels are engineered to allow for tieless column pours up to 12' x 12' square!

This same innovative technology provides contractors with an efficient and cost-effective solution for vertical wall applications.

- Standard panels up to 96sf each are easily assembled using 3/4" Speed Bolts and Nuts.
- The combination of holes and slots in both the top and side rails allow for easy alignment and quick gang assembly regardless of panel orientation.



- When MAF STS is assembled in large gangs, cycling time is optimized and crane time can be kept to a minimum.
- The 2,000 psf pour pressure rating along with the 64,000 SWL of the Super Taper Tie allows for faster wall pours.
- Labor and finishing costs are reduced with tie spacing up to 48 sf/tie and superior concrete finishes from the 1/4" steel face-sheet.



**Contact your Symons rep today to find how *THE POWER OF RED™* can offer YOU solutions and savings!**



## SYMONS SQUAD: MEET YOUR TEAM



**Michelle Rivas** is a Customer Service Representative for the South Region's Forming division, working out of our Houston, TX facility. She has over 4 years of experience and is focused on delivery of excellent customer service to our dealers and customers. Michelle is willing to roll up her sleeves and assist wherever help is needed. Her favorite expression is "I have a question."

In her free time, she enjoys cycling, watching movies or just hanging out at home with her adorable dog, Marley.

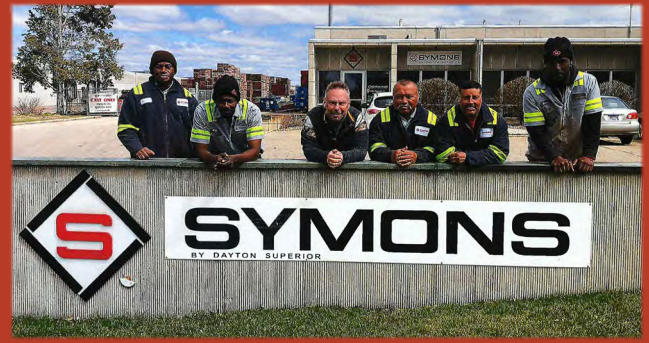
# OVER 60 YEARS (AND COUNTING) OF HAPPY CUSTOMERS IN BLOOMINGTON

The Symons Bloomington, MN rental yard has been providing concrete forming equipment sales and solutions to contractors of all sizes from the same location for over 60 years.

Over the years we have provided equipment to contractors in the Midwest for all types of construction projects - from bridges and stadiums to high rise apartment buildings and water treatment plants.

Our customer base has remained loyal over the years because of our continued efforts to make certain the service and equipment provided to them is top notch. Often plans change, and the Bloomington yard takes pride in being able to react quickly to satisfy those urgent needs.

While our core business is Steel-Ply® and Sym-Ply® forming equipment, this spring we are expanding our selection of chemicals and accessories in order to be able to more quickly and effectively supply our surrounding customer base.



*Our Minnesota team consists of Ron Listner (Branch Operations Manager), Terri Labandz (Customer Service Representative), Tom Schmidt (Forming Sales & Engineering), Jim Heidtke (Forming Sales & Engineering), and Taylor Blankenship (Chemical & Accessories Sales).*

*Our dedicated Yard Operations team includes Hafz Mohamedsalih, Kevin Mouri, Ignatius Nji, Hector Hernandez and Isaias Espinal.*

*You can reach the Symons Bloomington Facility by calling 952-888-7725.*

## IMPORTANT SAFETY REMINDERS FOR EXTENSION LADDERS



Extension ladders are frequently used for access on jobsites and in many households. Typically, the ladder manufacturer provides important safety instructions and labels on the ladder. While, this is a good place to start, it is also worth reviewing OSHA's simple, yet important guidelines for extension ladder use:

- All workers should review the safety instructions of the extension ladder and be familiar with OSHA's 'Do's and Do Not's' related to the use of portable extension ladders.
- Make sure both feet of your portable extension ladder are set on a stable surface that is not slippery. When that is not possible, the ladder must be secured or stabilized to prevent accidental displacement.
- A temporary barricade should be placed around the ladder when setting up in locations such as passageways, doorways, or driveways where they can be displaced by moving equipment or traffic.
- Ensure the extension ladder is placed so both side rails are soundly supported against the wall or other supporting surface, unless the ladder is equipped with a single support attachment.
- Set the extension ladder up at an angle so the bottom is placed one-fourth of the working length of the ladder from the wall or other vertical surface.
- When used to gain access to an upper landing surface, the side rails should extend at least three feet above the landing surface.
- Keep the ladder, your body, tools and any materials at least ten feet away from live electrical conductors (or further for higher voltages exceeding 50kv).
- A good guide for maintaining balance on the ladder is keeping your belt-buckle between the two side rails. Taking the time to reposition the ladder is always safer than over-reaching!



Remember, just ONE moment can make the difference between safety and injury. Stay safe!



WWW.SYMONS.COM  
888-977-9600