

FORMATIONS

THE
POWER
OF
RED™

Follow us under: Dayton Superior



SYMONS
BY DAYTON SUPERIOR

SPRING
2 0 2 0



SPECIAL
STEEL-PLY®
EDITION



SHOWN ABOVE: BETTING IT ALL ON RED AND WINNING! SYMONS STEEL-PLY ON A LAS VEGAS JOBSITE.

INSIDE THIS ISSUE:

HISTORY OF STEEL-PLY - P2

STEEL-PLY MANUFACTURING - P3

STEEL-PLY DEMAND &
ADVANTAGES - P2

ONLINE TRAINING - P4

AVAILABLE INVENTORY - P3

CRITICAL SAFETY DURING
COVID-19 - P4



SYMONS® STEEL-PLY® - THE HISTORY OF A LEGEND

Symons Steel-Ply forming system is the world's most recognized, trusted and utilized forming system in the world.

Introduced in 1955, Steel-Ply's revolutionary design allowed the system to be used in handset or gangform applications. Its strength, versatility, durability and labor savings features made it the go-to system within the concrete construction industry and 65 years later it remains the industry's forming system of choice.

Originally manufactured as a custom concrete forming system, it now boasts numerous panels, corners and related accessories that can be found on construction sites across the globe.

The Steel-Ply reputation is built on a solid foundation of tried and true performance that concrete construction contractors have trusted for decades.



STEEL-PLY INVENTORY MEETS DEMANDS

To keep pace with the current market, Dayton Superior is transitioning the production of Steel-Ply from a made-to-order system to an on demand, inventoried system.

Steel-Ply will be dispersed through three hub locations across the U.S., with availability in Symons forming yards and select distribution centers. To support this transition, Steel-Ply production operations have moved to a facility with more than 25 years of experience in the manufacture of high-quality forming systems.

One notable modification in the production of Steel-Ply is the use of birch plywood. Birch plywood is a widely accepted forming face that has proven effective over time. While darker than the plywood previously used, the birch plywood has undergone field testing of our own for six months and has continuously outperformed our expectations.

What hasn't changed since Steel-Ply was first introduced to the industry is the engineered specification to which the system is manufactured, along with Dayton Superior's strict quality controls set in place to ensure Steel-Ply continues to meet the high expectations of our customers.

To discuss your Steel-Ply needs and to learn more about consignment programs and direct shipment of custom size and quantity container loads, please contact your Symons by Dayton Superior [Sales Representative](#). You can also call 1-800-800-7966.



STEEL-PLY IS THE POWER OF RED™

- Steel frame with a special designed birch plywood face
- Multiple width and length panels
- Widths from 24" to 6" in 2" increments
- Lengths from 10' to 3' in 1' increments



ADVANTAGES

- Saves contractor time and costs in the field over job-built plywood formwork
- Reusable
- Only tool needed to setup and strip down is a hammer
- Reusable up to 200 times
- Plywood can be replaced and frame can be repaired
- Versatility

Available for rent or for purchase - contact your Symons Sales Rep today!



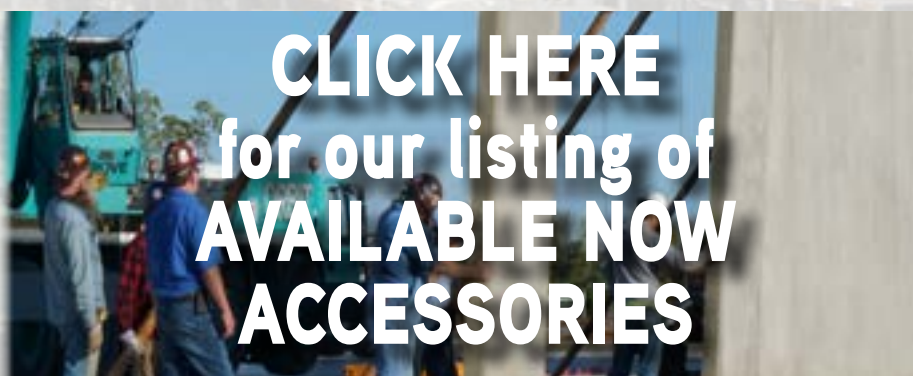
THE SYMONS BY DAYTON SUPERIOR ADVANTAGE - INVENTORY IS IN STOCK AND READY TO SHIP

The construction industry is facing an unprecedented challenge in the U.S. market and across the globe. Symons by Dayton Superior is committed to keeping our customers fully stocked with product during these uncertain circumstances to assist our essential workers, still out on the job. While many companies are struggling with shipping delays, we have Steel-Ply in stock and ready to ship today! In addition, Dayton Superior has inventory, available now, on a full range of accessory and chemical products to meet your needs, eliminating wait times and delayed arrivals.

- **We have Steel-Ply inventory on the ground in the U.S., ready to ship to customers TODAY!**
- *The industry leading provider of domestic-made concrete accessories and chemical products*
- *Offers the most domestic-made product options for the import products our competitors struggle to provide*
- *Service levels for accessories is averaging 95.6%*
- *Service levels for chemicals is averaging 95.75%*

Dayton Superior offers the best and most available inventory of the products our customers need, when they need them.

THAT IS THE SYMONS BY DAYTON SUPERIOR ADVANTAGE!



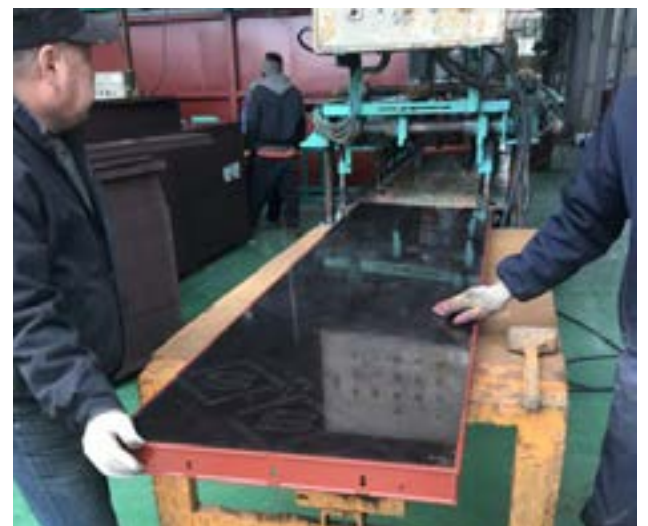
STEEL-PLY MANUFACTURING: BUILDING A LEGEND

When you are building the best, you need the best. The best engineered design, the best quality, the best facility and the best equipment. And Steel-Ply has it. We've shifted production to a new vendor partner, one who has more than 25 years of experience manufacturing forming systems, even providing Steel-Ply rail in the past.

The fit and function of Steel-Ply, long-trusted by contractors remains unchanged and fully compatible with the current Symons customer-owned and rental fleets.

What has changed? We now have a brand new, dedicated production facility for Steel-Ply that includes multiple welding lines and assembly lines, as well as a number of new presses. The facility is also capable of manufacturing metric panels in addition to Imperial panels to our exact production specifications.

The new facility and production process follow a strict, company-led quality control plan. In addition to precise production protocols, the quality control plan includes random engineering audits, regular site checks by Symons leadership and Symons-led on-site training to ensure the Symons' high standards for production.



STEEL-PLY INNOVATION: TAKING THE BEST AND MAKING IT EVEN BETTER

With change, comes the opportunity to innovate. We've listened to our customers and have added even more power to The Power of Red. Some new Steel-Ply features include:

- Larger Crossmember
From 1 1/2" x 2" x 1/8" to 2" x 2" x 1/8"
- Birch Plywood
Specifically Engineered for Steel-Ply
7-Ply Birch 200/200 Phenolic Surface Film vs current 5-Ply 100/30 HDO
- Product weighs now **even less**



ONLINE TRAINING AVAILABLE

With the current CORONA-19 situation, we have available online training videos. From light forming to chemicals and even splicing, we are proud to offer these to our valued customers to view at their convenience.

TRAINING VIDEOS AVAILABLE:

- Forming Basics
- Splicing Basics
- D303 Taper-Lock® Machine
- Light Forming Systems
- Grout Selection and Use
- Bridge Forming and Accessories
- Tilt-Up Construction
- And More

[Training Videos: Click Here](#)



CHECK OUT OUR YOUTUBE VIDEOS ON:

- Max-A-Form® STS
- Sleeve-Lock®
- Bar Lock® Couplers
- Testing Capabilities - Chemical Testing
- Testing Capabilities - Mechanical Testing
- Tilt-Up Insulated Wall Panel featuring Delta Tie
- Top-Cast® - Chemical
- DSC Innovation Center
- Online Training - Light Forming
- Online Training - Grout Selection and Use
- Tilt-Up Wall Construction and Paving

[YouTube Search: Dayton Superior](#)

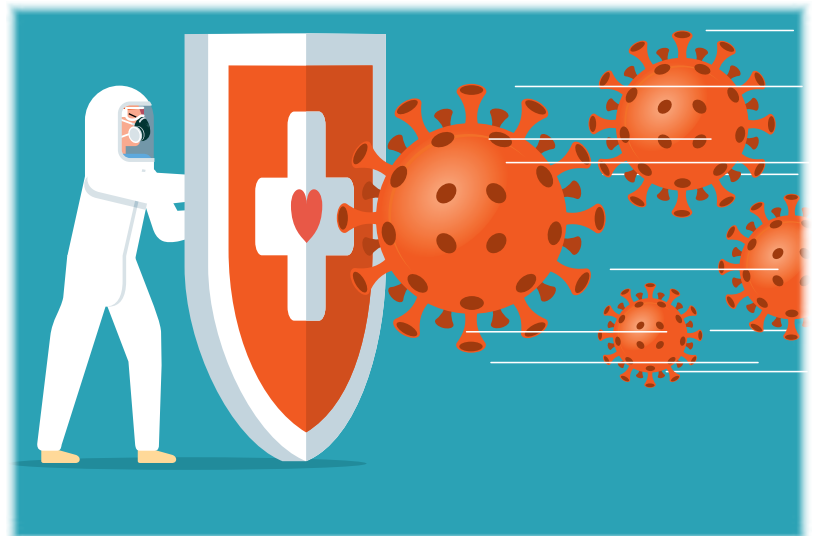


SAFETY IS CRITICAL IN THESE CHALLENGING TIMES

The COVID-19 pandemic has created a challenging environment for the construction industry. While a number of states have or are considering mandated closures of non-essential businesses, many have designated businesses in the construction sector, and those businesses supporting construction, as essential. Jobsites across the U.S. remain open and active, breathing some life into a struggling economy despite the unusual conditions under which we all are now working.

These unusual conditions are likely to continue creating challenges for contractors and construction workers over the coming weeks.

One challenge critical to the industry is employing enhanced safety measures on the jobsite to protect workers from exposure to the virus.



The construction industry has always made worker safety the highest priority. The use of personal protection equipment, such as hard hats, gloves and eye protection and other strict safety protocols are standard in protecting workers from the known dangers of a jobsite. But, in the current construction landscape, there is an unfamiliar threat to jobsite safety.

The uncertainties that accompany the pandemic present a host of complications for contractors, but there are some simple, easily deployed actions that can be taken to enhance any jobsite's exposure prevention plan:

- Use safety meetings to educate jobsite worker on prevention measures and symptoms of COVID-19
- Apply strict limits to jobsite access and prescreen any visitor for COVID-19 symptoms
- Limit the number of workers in confined spaces
- Clean shared surfaces such as inside jobsite trailers, handrails and machine controls, regularly
- Don't allow workers to share tools
- Request workers wear gloves and eye protection at all times, even for tasks that may not require it

In this unusual time, it is critical for the construction industry to set an even higher bar for safety. With each measure put in place and each step taken to stop the spread, the construction industry and all those who support it, including Dayton Superior, will continue to be healthy, safe and strong. It is essential.

