

FORMATIONS

ISSUE 17

PUBLICATION DATE: AUGUST 2023

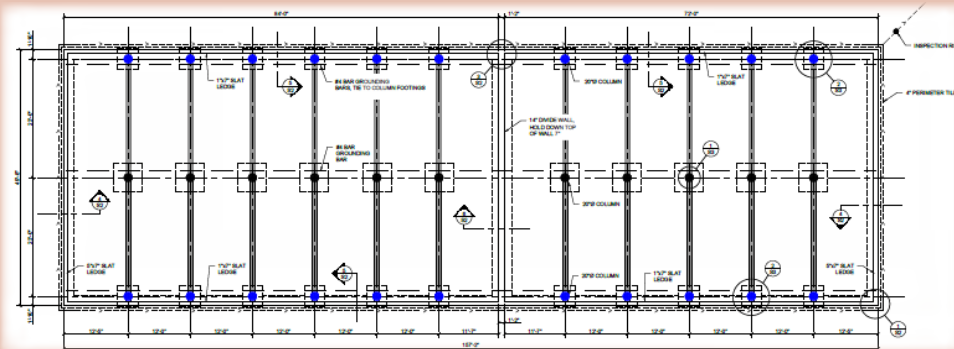
SPEEDY CATTLE BARN FOUNDATIONS - "MOO"VING RIGHT ALONG

Redfield Construction was hired to construct two foundations for the Kronlokken Cattle Barn in Sacred Heart, MN. One of the foundations was a standalone building and the second foundation was an addition to an existing structure. Redfield Construction has a great working relationship with Duinick Concrete Supply in nearby Willmar, a dealer of Symons® by Dayton Superior®.



Symons partnered with Duinick Concrete with a 'Rent to Re-Rent' forming system arrangement for this project. The customer was looking for a Gang Forming System that would allow them to construct the foundation in the quickest time possible.

Symons Sym-Ply® Gang Forms were used by Redfield to meet their quick deadline. **They constructed 20 – 12ft. tall x 15ft. wide gang forms in an 8-hour day with a team of ten.** Once the gang forms were assembled, they were able to pour 150 linear feet of wall every other day. *Redfield Construction was able to build both foundations in less than one month.*



Redfield's crew were very happy with the Sym-Ply system and the speed of how fast the system went together. They were pleased how **FAST AND SIMPLE** it was to move from wall pour to wall pour.



Let Symons improve your speed and productivity on YOUR next project!



REDFIELD
CONSTRUCTION
FACEBOOK

Contact your Symons rep today to find how **THE POWER OF RED™** can offer you **SOLUTIONS** and **SAVINGS!**

Find your regional rep here. --->



MEET JON, YOUR 'NORTH CENTRAL' CONNECTION

We are pleased to announce that Jon Bradford has accepted the position of Dealer Sales Manager for our North Central Symons Division. Having spent 10 years on our customer service team, Jon is well versed in all areas of forming. Based out of our Kansas City location, he will oversee forming sales, service and training for our Iowa, Nebraska, Kansas, and Missouri regions.

Jon and Sarah (his wife of 20+ years) are part of a die-hard KC Chiefs family, along with their four kids. As a huge MLB baseball fan as well, Jon's goal is to visit all 30 stadiums eventually. Fun fact: he was a radio AND club DJ for over 15 years. (We know who to invite to our next party!)

Jon can be reached at jonbradford@daytonsuperior.com or 913.279.0264.



WISCONSIN EXPANDS (THE POPULAR) POPLAR CREEK TOWN CENTER

In Brookfield, WI, the intersection of Bluemound and Barker Roads immediately north of Interstate 94 has been known as Goerke's Corners since the 1870's. It was named after blacksmith, wagon maker and innkeeper Frederick Goerke, who operated there.



Today, this bustling transportation hub is the new home of Poplar Creek Town Center, a \$120 million mixed-use development project. Winner Communities is currently building a 25-acre development there that will be anchored by the Marriott Center - both a Courtyard and Residence Inn by Marriott.

On the residential side, Poplar Creek currently offers a pair of four-story buildings that total 130 apartments. Five residential buildings are being added to the housing area and Superior Masonry (out of Butler, WI) was awarded the concrete bid. With wall heights range from 14' high to 22' high, each building will also offer an underground parking lot as well. Concrete Superintendent Matt Wenzler utilized Sym-Ply® Forming System for this project due to its strength, durability and versatility.

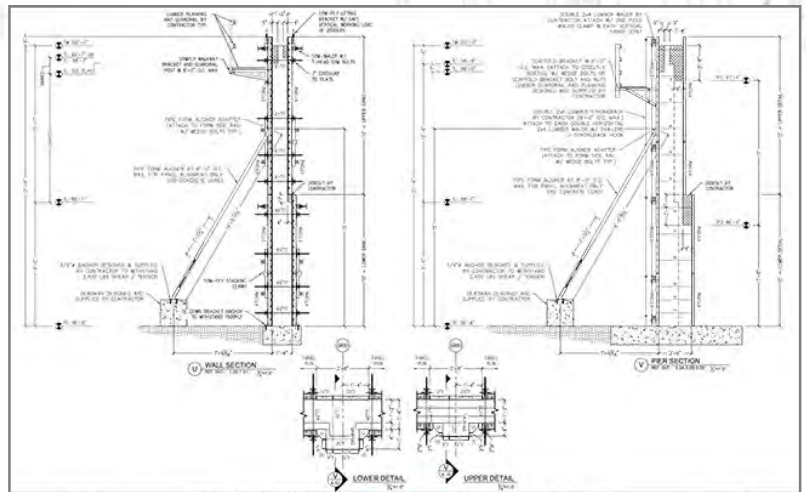
The project, which began in November 2022, is starting its last building this month.



**SUPERIOR
MASONRY
WEBSITE**



**POPLAR CREEK
TOWN CENTER**



WWW.SYMONS.COM
888-977-9600

