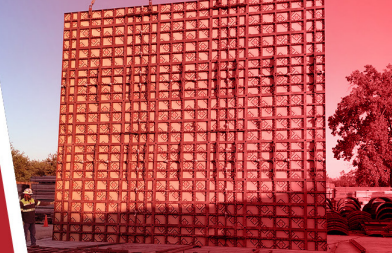




**SYMONS**<sup>®</sup>  
BY DAYTON SUPERIOR  
**THE POWER OF RED**<sup>™</sup>



# FORMATIONS

## Adaptable Formwork Drives Project Efficiency

Spring  
2026



When bridge builder RPM xConstruction (RPMX) was awarded the Park Boulevard extension in Wylie, Texas, they turned to the team at **Symons** to help form and support the columns and caps on the project. Beyond the geometry of the multi-bent bridge's substructure, the project features unique elements, including crossing three railroad tracks and providing unobstructed right-of-way access to the local National Guard armory throughout

the duration of the project. **Symons Steel Form Products** were an excellent fit for the large-diameter columns and oversized caps, thanks to their strength and adaptability to the client's schedule and budget.

Symons provided their **rentable Tower-Max<sup>®</sup> circular column forms** for the project's round columns. The Tower-Max system features the main diameters (18" through 96") and four standard form heights (8ft, 4ft, 2ft, and 1ft).





Each form has incorporated lifting points, a multitude of attachment areas for walkways and bracing, and a 2ft on-center vertical bolting pattern, reducing the labor required to strip and reset the forms compared to legacy circular column form products. **The versatility of the Tower-Max form system allowed RPMX to efficiently cycle through the project's columns with a minimal form set.**

The dual-phased Inverted Tee caps on the project required the use of the **Symons Max-A-Form® STS system** due to its favorable self-spanning properties, industry-leading strength, and ability to be reconfigured for the variety of cap lengths and right-of-way conditions throughout the project.

The cap support was created by a dancefloor using Max-A-Form STS 8-foot-wide main beams and aluminum joists for decking. The Inverted Tee section profile was achieved with the aid of the rentable Inverted Tee Support Frame and Riser Bracket, which were bolted directly to the form panels. Where required, the dancefloor could be mounted alongside the inverted tee formwork, allowing vertical access over the right-of-way. The workhorse of the cap form design was the rentable 300 Kip Support Bracket with Sand Jack, which allowed the forms to be 100% column hung, even when the phased cap extended to what would typically require shoring.

This project highlighted the strength of the rentable Max-A-Form STS and Tower-Max systems on a high profile bridge with several unique design constraints. The same products can be used on bridge projects of all sizes due to the versatility built into the systems and the techniques practiced by Symons engineers.

***Reach out to your local Symons sales representative for help forming and supporting your next bridge project.***





# West Engineering

If there's a structure type, forming or shoring system, or a challenging concept out there, chances are the engineering team in Rubidoux has tackled it.

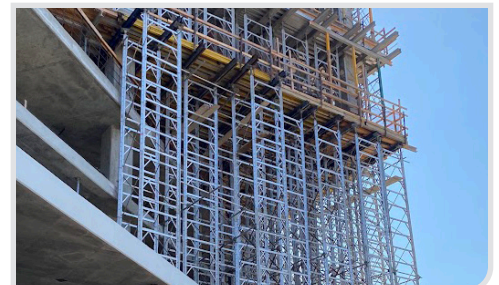
Led by Mikayel Nalbandyan, P.E., our West Region has successfully managed the most diverse and robust backlog in our forming business over the past five years. Based at our Rubidoux, California facility, the team brings an impressive average tenure of nearly 18 years in the forming and shoring industry. That depth of experience matters because virtually every forming and shoring system in the Symons portfolio passes through this group.

This includes parking structures utilizing our Garage Beam System (GBS), a specialty of the West Region, which serves as the engineering and applications hub for all GBS projects. Many western projects also require on-site equipment reviews, and whenever possible, a member of the engineering team travels directly to the jobsite. These visits not only ensure accuracy and safety but also strengthen customer relationships and expand our team's hands-on expertise.



Our West Region engineering team includes Mikayel Nalbandyan, P.E., Florence Acido, Tahj Davis, Michael Edmondson, Marc Lipka, Tim Mannion, Coreen Palomares, and Ronoel Romero.

***Entrust your next project to a team defined by experience, professionalism, and a customer focused approach. Their work will set your project up for success and establish a strong, enduring partnership.***





# SPOTLIGHT

## JANEL STEWART

### Customer Service

RUBIDOUX



**Janel Stewart** joined the Rubidoux Customer Service Team in August 2024 and quickly became an essential part of the department. Cross trained in all customer service functions, she has found her niche in returns processing, where her attention to detail and ability to master new procedures stand out.

Janel brings a strong understanding of inventory accuracy and isn't afraid to ask the right questions to keep processes running smoothly. In addition to returns, she helps reduce run on rent credits and manages damage and shortage billing. Her proactive approach and willingness to face any challenge make her a reliable and valued teammate.

**Outside the workplace, Janel is grounded by her family.** She and her husband, David, have been married for 13 years and are proud parents to two sons, Nate (12) and Lorenzo (10). Her dedication at work and at home reflects the same steady commitment and positive energy she brings to the Rubidoux team every day.