

FLOORING

ACCESSORIES

G27 Round Nail Stake

Manufactured from high-quality steel with a sharp point to minimize rock deflection.

WTW Premium Tie Wire

Tie wire used in wall forming applications available in plain and PVC-coated.

D42 Bag Ties

Tie bags are 16 gauge, annealed loop-ended wire ties used for tying rebar and other non-construction applications, such as bags and carpet rolls.

A100 Speed Step® Bracket

A reusable forming bracket designed to simplify layout, set-up and stripping of concrete stair forming.

Individual High Chair (HC)

Supports reinforcing bar or wire mesh during concrete placement in flat slab and elevated slab applications to maintain proper concrete coverage. Available dipped.

Slab Bolster (SB)

Dipped, continuous reinforcing bar support available in 1", 1.5" and 2" sizes.

CHEMICALS

Casica Alpha 1

One-component, non-sag polyether hybrid sealant designed for maximum adhesion between a variety of surfaces. A paintable, weather resistant seal with 25% joint movement capability for the ultimate long-term, durable seal or bond.

AggreGloss™ J25

25% methacrylate copolymers in an aromatic solvent. This clear sealer will not yellow under exposure to sunlight

Tuf Seal™ J35

Clear, non-yellowing, methyl methacrylate polymer-based sealer. Dries to a durable, high gloss finish and provides excellent resistance to oils, greases and weathering.

Ultra Seal EF

A water based, Earth Friendly, low odor VOC compliant acrylic concrete sealer.

Green Bean Clean®

An industrial strength bio-based gel stripper made from renewable resources.

Casica Rapid Bond

One-component, polyether hybrid quick-grabbing bonding adhesive with rapid strength gain. Bonds quickly to wet substrates and provides excellent green strength with no need for braces or fasteners.

Level Primer J42RTU

Ready to use re-emulsifiable primer and works as both a sealer to help prevent pinholes in floor leveling materials and as a bonding agent to ensure good adhesion.

Casica Construction Adhesive

One-component, polyether hybrid construction adhesive for creating strong bonds between common building substrates. 100% solids formulation offers VOC compliance and an eco-friendly adhesive option.



Pro-Poxy™ 100

100% solids, high modulus, moisture tolerant, low viscosity epoxy adhesive for gravity feed or pressure injection of cracks in concrete.

Pro-Poxy™ 300 Fast

A two component, 100% solids, moisture tolerant, high modulus epoxy gel adhesive that meets ASTM C-881 and AASHTO M-235.

Pro-Poxy™ 400

A two component 100% solids, moisture tolerant, all weather epoxy acrylate hybrid anchoring gel formulated. Sets up at room temperature and down to temps of 15° F (-9° C).

Sure Finish

Ready to use re-emulsifiable primer and works as both a sealer to help prevent pinholes in floor leveling materials and as a bonding agent to ensure good adhesion.

Recrete™ 20 Minute

General purpose cement-based concrete repair and patching material. Provides a fast setting repair mortar with excellent workability. Used for repair and patching of vertical, overhead and horizontal areas.

Thin Resurfacer

A multi-purpose repair and resurfacing product for use in thicknesses ranging from feather edge up to ½ in. (1.3 cm).

Casica Concrete Repair

A concrete crack filler and sealer for repairs to vertical and horizontal concrete, masonry, stone and stucco. Interior and exterior use.

ProFill™ SL

This superior-grade, one-component MS hybrid self-leveling sealant creates waterproof joints in horizontal concrete substrates. Ideal for filling cracks or gaps on driveways, sidewalks, patios, steps, and garage floors.



RESIDENTIAL CONCRETE SOLUTIONS

ACCESSORIES | CHEMICALS | FORMING SYSTEMS

INSIDE THE HOME

FOUNDATION

BASEMENT

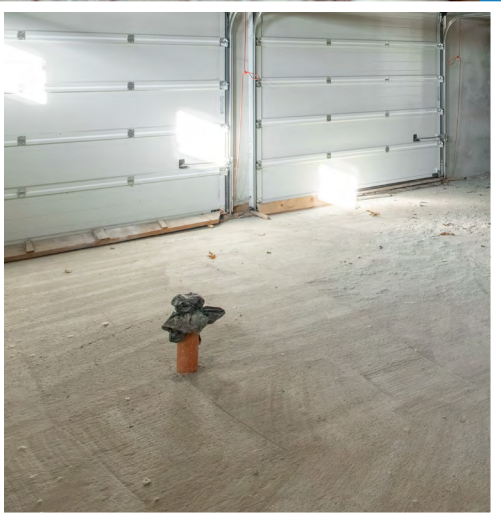
GARAGE

FLOORING

Backed by Dayton Superior's long history of excellence in the construction industry, residential brand Casica brings the same trusted selection, quality and performance to the residential market.

Casica offers a versatile and vast portfolio of accessory, chemical and forming products for new construction, repair, restoration and renovation in and around the home.

Casica is your **SINGLE-SOURCE** provider for comprehensive solutions to make your next build or home-based project a success.



contact@casica.com

sales@casica.com

03/23

Casica™ is a trademark of Dayton Superior Corporation.
© 2023 Dayton Superior Corporation



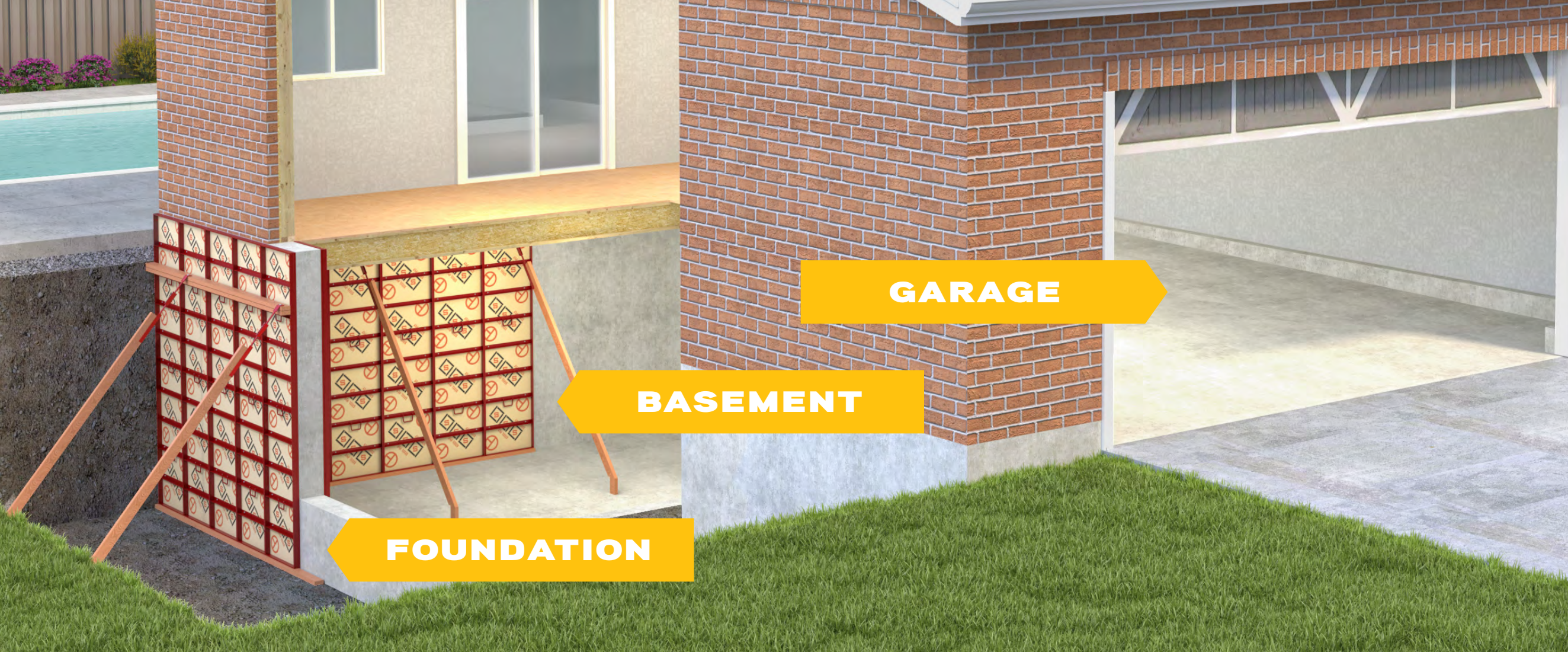
Customer Service: 888.977.9600
Technical Assistance: 877.266.7732



Casica.com



Corporate Address:
1125 Byers Road, Miamisburg, OH 45342



FOUNDATION & BASEMENT

CHEMICALS

General Use Repair

Recrete™ 20 Minute

General purpose cement based concrete repair and patching material. Provides a fast setting repair mortar with excellent workability. Used for repair and patching of vertical, overhead and horizontal areas.

Casica Concrete Repair

A concrete crack filler and sealer for repairs to vertical and horizontal concrete, masonry, stone and stucco. Interior and exterior use.

Joint Fillers/Sealants

Casica Alpha 1

One-component, non-sag polyether hybrid sealant designed for maximum adhesion between a variety of surfaces. A paintable, weather resistant seal with 25% joint movement capability for the ultimate longterm, durable seal or bond.

ProFill™ SL

This superior-grade, one-component MS hybrid self-leveling sealant creates waterproof joints in horizontal concrete substrates. Ideal for filling cracks or gaps on driveways, sidewalks, patios, steps, and garage floors.

ProFill™ AW

Two-component polyurea joint filler designed for heavy duty traffic. Solvent free, flexible, and self-leveling, used to fill tooled interior/exterior control joints or new construction saw joints.

Crack Injection

Pro-Poxy™ 100

A 100% solids, high modulus, moisture tolerant, low viscosity epoxy adhesive for gravity feed or pressure injection of cracks in concrete.

Anchoring Gels

Pro-Poxy™ 300 Fast

A two component, 100% solids, moisture tolerant, high modulus epoxy gel adhesive that meets ASTM C-881 and AASHTO M-235.

Specialty Repairs

Sure Finish

Polymer-modified, cement-based rapid setting underlayment. Repair for damaged interior or exterior concrete wall surfaces that will be coated. No priming required.

Bonding Agent

Casica Rapid Bond

One-component, polyether hybrid quick-grabbing bonding adhesive with rapid strength gain. Bonds quickly to wet substrates and provides excellent green strength with no need for braces or fasteners.

Cleaners/Strippers

Green Bean Clean®

An industrial strength bio-based gel stripper made from renewable resources.

ACCESSORIES

(when wood form systems are used)

A4H Sure-Snap Hex Head Tie

A16 Omni Wedge

A high strength snap tie wedge.

A100 Speed Step® Bracket

A reusable forming bracket designed to simplify layout, set-up and stripping of concrete stair forming.

A43 Footing Tie

Used to form footers or grade beams up to 48" wide, provides economic way to support concrete forms from bowing or collapsing while concrete is being poured.

G27 Round Stake

Manufactured from high-quality steel with a sharp point to minimize rock deflection.

CR200 Wedge Anchor

A zinc-coated post-installed anchor for use wherever fixtures need safely secured into concrete.

CR400 Plastic Foundation Chairs

Offered in 2 or 3 bar configurations, rebar sizes up to #5 simply snap into place with these plastic chairs.

CR400 Rod Chairs

The Rod Chair accommodates any size rebar while providing a sturdy, metal base for 2 or 3 bar configurations.

CR600 Metal Lath Sheet

These galvanized sheets help stucco adhere to walls and ceilings. Compatible with both steel and wood framing.

CR700 Aluminum Form Tie

Used to hold aluminum forms in place to achieve the desired wall thickness. They break off easily and hold suspended rebar in place. Available in both full and nominal sizes.

GARAGE

CHEMICALS

Sealers

Tuf Seal™ J35

A scientifically formulated clear, non-yellowing sealer comprised of methyl methacrylate polymers. Dries to a durable, high gloss finish that not only protects, but also beautifies floors. Designed to provide protection from oil and gasoline and excellent resistance to oils, greases and weathering.

Ultra Seal EF

An Earth Friendly, non-yellowing, low-odor concrete sealer with exceptional chemical resistance.

Joint Fillers/Sealants

Casica Alpha 1

One-component, non-sag polyether hybrid sealant designed for maximum adhesion between a variety of surfaces. A paintable, weather resistant seal with 25% joint movement capability for the ultimate long-term, durable seal or bond.

ProFill™ SL

This superior-grade, one-component MS hybrid self-leveling sealant creates waterproof joints in horizontal concrete substrates. Ideal for filling cracks or gaps on driveways, sidewalks, patios, steps, and garage floors.

ProFill™ AW

Two-component polyurea joint filler for heavy duty traffic areas. Solvent free, flexible, and self-leveling, used for tooled interior/exterior control joints or new construction saw joints.

Latex Bonding Agent/Additive

Level Primer J42RTU

Ready to use re-emulsifiable primer and works as both a sealer to help prevent pinholes in floor leveling materials and as a bonding agent to ensure good adhesion.

ACCESSORIES

D42 Tie Bags

Tie bags are 16 gauge, annealed loop-ended wire ties used for tying rebar and other non-construction applications, such as bags and carpet rolls.

G27 Round Stake

Manufactured from high-quality steel with a sharp point to minimize rock deflection.

CR200 Wedge Anchor

A zinc-coated post-installed anchor for use wherever fixtures need safely secured into concrete.

CR600 Metal Lath Sheet

These galvanized sheets help stucco adhere to walls and ceilings. Compatible with both steel and wood framing.