

# THE POWER OF RED™

**HIGHWAY MEDIAN BARRIERS  
AND BRIDGE PARAPETS**

**CONCRETE  
CONSTRUCTION  
SOLUTIONS**

**BROCHURE**



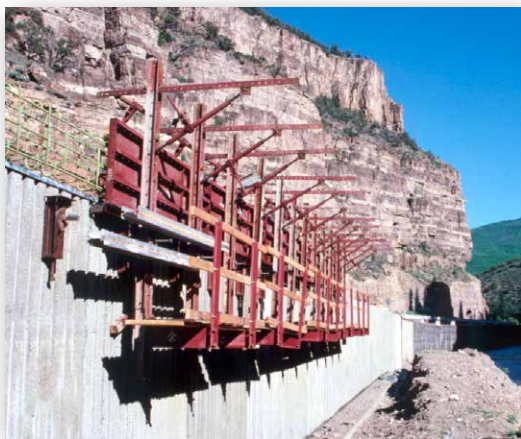
**SYMONS®**  
BY DAYTON SUPERIOR

## All-Steel Forming System

Symons cast-in-place Median Barrier and Parapet forms are designed to conform to the “Jersey style” contour.

Available in 5' or 10' standard lengths, all-steel units can be furnished as an assembly or in component parts depending on your specific requirements.

Symons offers adjustable top ties for standard forming operations or an adjustable yoke with tieless design and single-unit-striping. Both options have a range of top widths from 6" to 14" in 1" increments, providing versatility for almost every median barrier project.



## Forming Versatility

Symons standard cast-in-place forms can also be used for precasting median barriers or parapets.

Choose an Adjustable Yoke or an Adjustable Top Tie to provide top widths from 6" to 14" in 1" increments. The Adjustable Yoke allows a tieless design and self-stripping capability. Remove a few bolts, lift from the yoke, and both sides strip and fly.



[www.youtube.com/watch?v=x3pP5ZUtsjg](http://www.youtube.com/watch?v=x3pP5ZUtsjg)



## Precast Median Barrier Forms

Symons can provide formwork for a variety of methods for precasting median barriers. An all-steel design withstands the demands of repetitive casting operations, producing a smooth and accurate shape every time.

Standard precast forms are furnished in 10' or 12' lengths and may be bolted end-to-end for long line applications. Anchor to a casting bed for conventional precasting, or use the Adjustable Trunnion Bulkhead for rollover duty.



## Rollover Median Barrier Forms

The rollover method is accomplished by attaching Symons unique Adjustable Trunnion Bulkhead. Standard 10' or 12' lengths conforming to the "Jersey style" contour can be bolted end-to-end for barriers up to 36' long. This highly productive method

allows casting more product with standard formwork and minimal labor.

Standard flat bulkheads are available for conventional inverted casting, while an adjustable trunnion bulkhead is utilized for productive rollover operations.

## Rentable Modular Steel Form Systems

In addition to standard and custom formwork, we have a complete line of accessories available, including:

- Steel chamfer strips of 1/2", 3/4" or 1" size
- Magnetic chamfers
- PVC chamfers of 3/4" and 1" size with a 3" tail for attachment
- Rolled walers, channels and angles



## Custom Precast Forms

Custom forms are available:

- Symons ability to design and manufacture custom steel formwork provides concrete contractors and precasters with a reliable source for unique formwork needs.
- Form Liner — Custom or standard patterns provide architectural finishes



**SYMONS**<sup>®</sup>

BY DAYTON SUPERIOR

1125 Byers Road  
Miamisburg, OH 45342  
937-866-0711  
888-977-9600  
WWW.SYMONS.COM

**THE  
POWER  
OF RED**<sup>™</sup>

SYM103  
06/16

Copyright © 2016 Dayton Superior Corporation, All Rights Reserved.