



**MAX-A-FORM® STS  
TOWER-MAX® CCF  
ALL-STEEL FORMING SYSTEM**

**CONCRETE  
CONSTRUCTION  
SOLUTIONS**

**BROCHURE**

**THE  
POWER  
OF RED™**



**SYMONS®**  
BY DAYTON SUPERIOR



**SYMONS**  
BY DAYTON SUPERIOR

## Max-A-Form® STS Means Superior Strength



The Max-A-Form STS forming system is the Industry leader in rentable, self-spanning, steel formwork. Its superior pour pressure and moment capacities result in labor and material savings for the end user. The all-steel, welded frame make it the ideal choice for gang forming tall structural walls, pouring tieless columns, or for supporting concrete over long spans without shoring or custom equipment. The proprietary design and manufacturing process result in a superior finish, pour after pour.

### Panel Design

Max-A-Form STS panels are constructed with a 1/4" steel face plate, heavy duty crossmembers, and a continuous back-up flat that supports higher pour rates. Panels up to 8' wide by 20' long are rated at 2000 psf; 9' wide panels are rated for 1,700 psf, 10' wide panels are rated at 1600 psf, and 12' wide panels are rated at 1300 psf. The design of the STS panel results in a "no pillow" concrete surface at rated loads. In addition, the rigidity of these panels virtually eliminates waler or strongback requirements, and reduces the number of ties required.

### Max-a-Form STS Compatibility

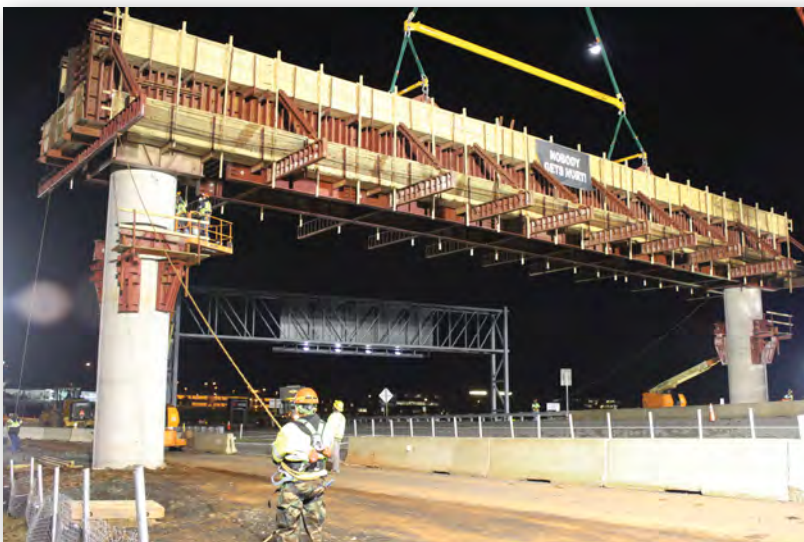
STS panels are designed to allow the use of existing Max-A-Form accessories, including: Combination Rigid Corners, Inside Stripping Corners, Walkway Brackets, Wind Beams, Top and Bottom Ties, Anchor Brackets, Swivel Screw Jacks, and many other standard products.



### Self-Spanning

The strong frame design with 1/4" steel face result in superior moment (self-spanning) capacities. Max-A-Form STS provides moment capacities 30% higher than previous Max-A-Form. This means little or no shoring or custom equipment that slow cycling times.

Stability Beams and Pier Cap Braces, Spreader Beams, Top Tie/Lift Brackets, Bottom Ties with Swivel Screw Jacks, Walkway Brackets and other accessories are available for self-spanning applications.



## Productivity

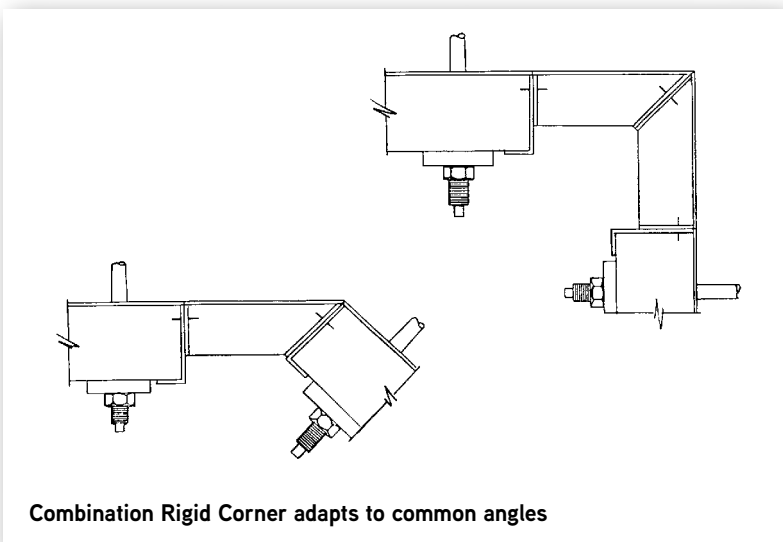
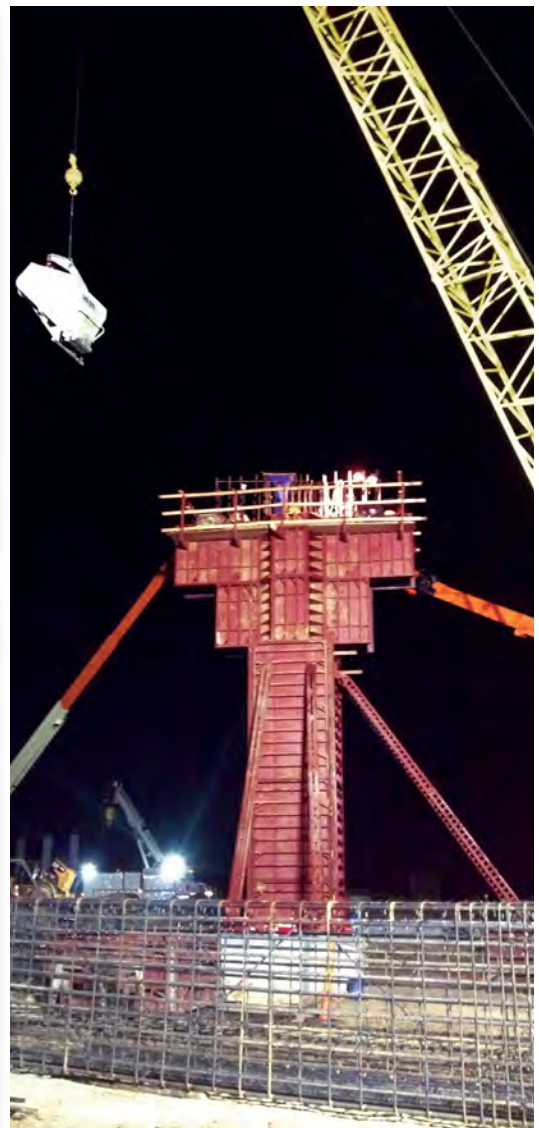
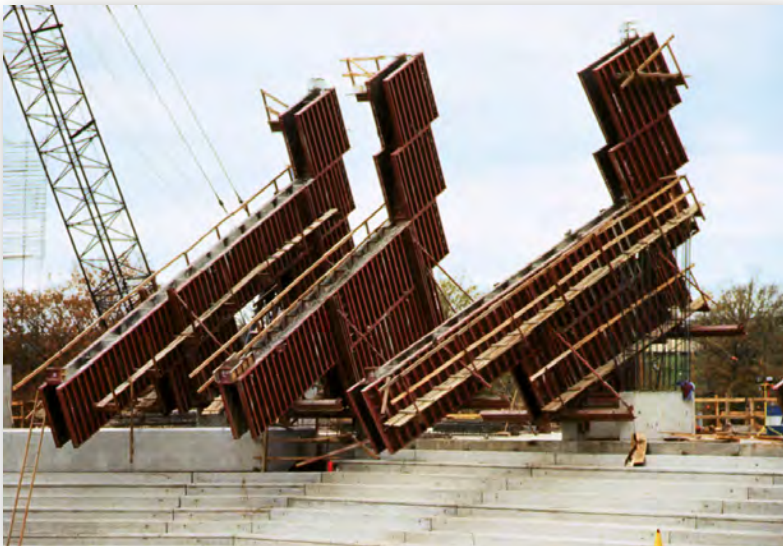
When assembled in large gangs, Max-A-Form STS becomes even more productive. Cycling time is optimized on repetitious forming applications, and the modular design allows quick modifications to meet changing wall forming requirements. With large gangs and easy-to-use support equipment like the Max-A-Form Anchor Clamps, crane time is kept to a minimum.

Productivity is further enhanced during setting and stripping because crane time is reduced by picking caps as a single unit or in large assemblies.

## Columns and Piers

Pour larger and taller columns with confidence utilizing Max-A-Form STS panels. The increased pour pressure capacity of the STS panels results in columns up to 12' square without ties, poured faster, and with a smooth finish. Columns can be gangformed with Max-A-Form hinges to allow the entire form to be stripped in one piece.





### Corner Options

Double-Duty, Combination Rigid Corner halves bolt up to produce straight, 90 degree corners that are easy to strip or provide a 45 degree filler when used as a single form.

Inside Stripping Corners allow easy stripping of gangs adjacent to corners or pilasters.

## Simple Wall Forming

Forms are assembled easily using a 3/4" Speed Bolt and Nut. Panels are punched with a combination of holes and slots in both the top and the side framing to allow easy alignment and quick assembly regardless of forming panel orientation.

Panels are available in more than 100 sizes, from 2' wide x 1' long to 10' wide x 20' long. The 12' wide panels are furnished in a maximum of 8' lengths. The large number of fillers allows more gang and detail flexibility. Large, 200 sq.ft. panels mean fewer pieces, fewer panel joints and less labor to assemble.

## Tie Systems

Symons by Dayton Superior offers a variety of tie systems with capacities and configurations to maximize cost effectiveness for almost any concrete forming application.

The reusable Super Taper Tie is designed specifically to handle the higher loads from the Max-A-Form STS system. These ties are tapered from 1 1/4" to 1 1/2", are rated at a Safe Working Load (SWL) of 64,000 lbs., and are supplied with 2 1/2" threads per inch for rapid installation and stripping. Since the threads are the same diameter on either end, this tie system utilizes the same, one-piece swivel wing nut on either end. This assembly can handle battered walls up to 10° without the use of special washers.

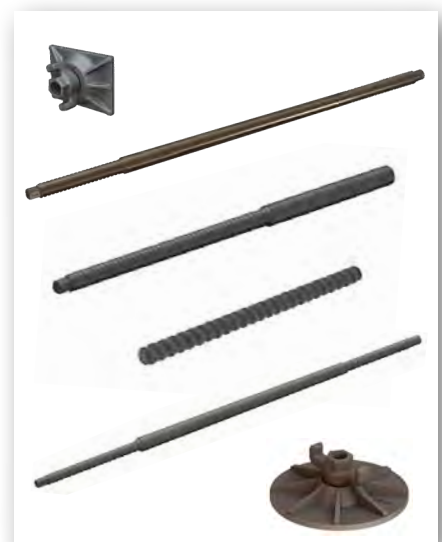
The reusable Super She-Bolt is designed specifically to handle the higher loads from the Max-A-Form STS System. It features a 1.5" outside diameter with 32mm D/R outside thread and 26mm D/R inside thread, is rated at a SWL of 64,000 lbs, and uses the same one-piece swivel wing nut accessory as Super Taper Tie. Two types of 26mm inside rods are available: rated at a SWL of 56,000 lbs and 64,000 lbs.

65K Taper Ties are tapered from 1 1/4" to 1", are rated at a Safe Working Load (SWL) of 32,500 lbs, and are supplied with 2 1/2" threads per inch for rapid installation and stripping. Since the threads are the same diameter on either end, this taper tie system utilizes the same, one-piece swivel wing nut on either end. This assembly can handle battered walls up to 10 degree without the use of special washers.

She-Bolt features a 1.25" outside diameter with 20mm D/R outside and inside threads, is rated at a SWL of 39,200 lbs, and uses the same one-piece swivel wing nuts accessory as 65K Taper Tie. B12A 20mm inside rods are rated at a SWL of 32,000 lbs.

Taper Ties and She-Bolts are available with Plate Washers or Cast Bearing Washers and nuts for efficient flat and battered wall applications. SWLs for these ties are 25,000 lbs or 48,000 lbs and She-Bolts are 25,000 lbs. or 42,500 lbs.

External top and bottom ties are available in lengths and adjustment ranges to accommodate wall thicknesses and special concrete form applications.





### **Friction Collars**

Max-A-Form Friction Collars provide high capacity, anchorless support without the high cost and labor needed to place or finish embedded anchors or thru-rods. Round Friction Collars support 96 Kips for columns up to 36" in diameter; a little less for larger diameters. Adjustable Rectangular Friction Collars support 20 Kips on columns 12" to 24" on each side.

### **Anchor Brackets**

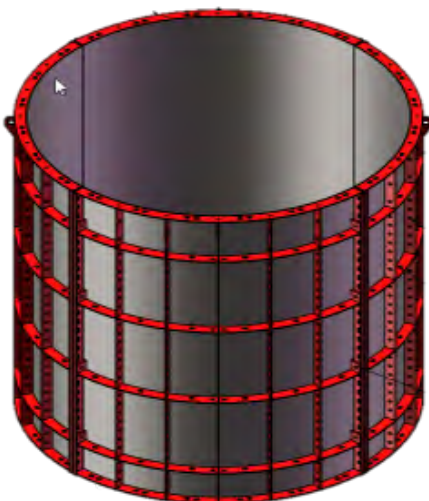
Anchor Brackets are available in several configurations to meet specific concrete forming requirements.

Anchor Brackets, in 12, 25, 40, 70, 140 and 300 Kip capacities, provide heavy duty capability for concentrated loading applications. High capacity screw jacks allow height adjustments. Multiple-hole positioning provides support for overhanging pier caps.



### **Tower-Max® CCF and Bullnose Forming**

Tower Max is an all-steel, Circular Column Form System rated at 3,000 psf to allow maximum pour rates up to 60" diameters. Forms 61" and up have a 2,000 lbs. pour pressure rating. The Tower Max CCF is available in 13 standard diameter sizes ranging from 18 inches to 96 inches. Custom sizes can also be manufactured.





### Custom Capability

Symons by Dayton Superior can manufacture custom components to meet almost any design requirement. Contact your Symons representative for more information.

### Architectural Finishes

Chamfers, Formliners, and Rustication Strips can be attached to the form face to provide unique architectural details.

The all-steel form face provides an excellent finish, reducing finishing requirements.

For more information on Symons forming systems, visit [WWW.SYMONS.COM](http://WWW.SYMONS.COM) or call 800-800-7966.





**SYMONS**<sup>®</sup>

BY DAYTON SUPERIOR

1125 Byers Road  
Miamisburg, OH 45342  
937-866-0711  
800-800-7966  
[WWW.SYMONS.COM](http://WWW.SYMONS.COM)

**THE  
POWER  
OF RED**<sup>™</sup>

REV. 10/23

Copyright © 2016 Dayton Superior Corporation, All Rights Reserved.