



**FLEX-FORM®
STEEL FORMING SYSTEM**

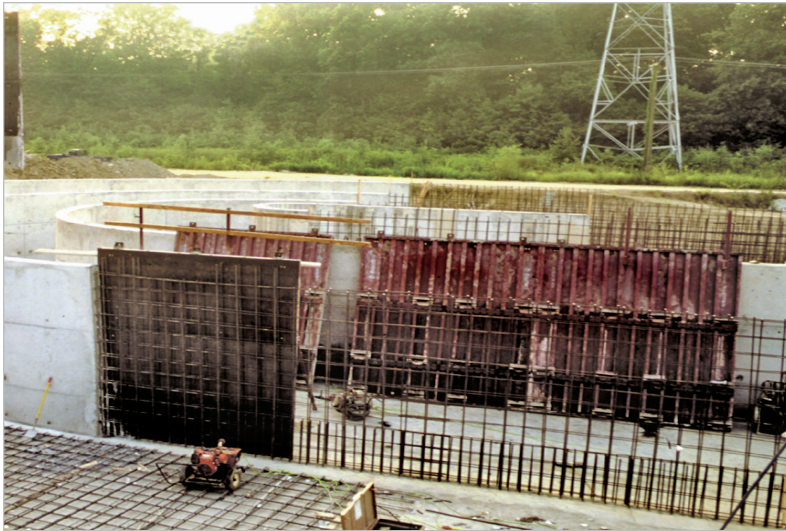
**CONCRETE
CONSTRUCTION
SOLUTIONS**

BROCHURE

**THE
POWER
OF RED™**



SYMONS®
BY DAYTON SUPERIOR



System Features

The all-steel Flex-Form system gives you all the strength and versatility you expect from Symons. Flex-Form has integral 4" deep vertical stiffeners with $\frac{3}{16}$ " steel skin plate to provide up to a 1,200 psf system that adapts to any radius 5' and over.

Factory-rolled steel ribs set the radius and bolt to the top and bottom of flexible panels to shape and securely hold the form in the required radius. Panels conform accurately to the radius of the ribs — this design assures the correct radius every time. By substituting a straight rib, you can use the Flex-Form system for straight walls when needed.



Excellent Concrete Finish

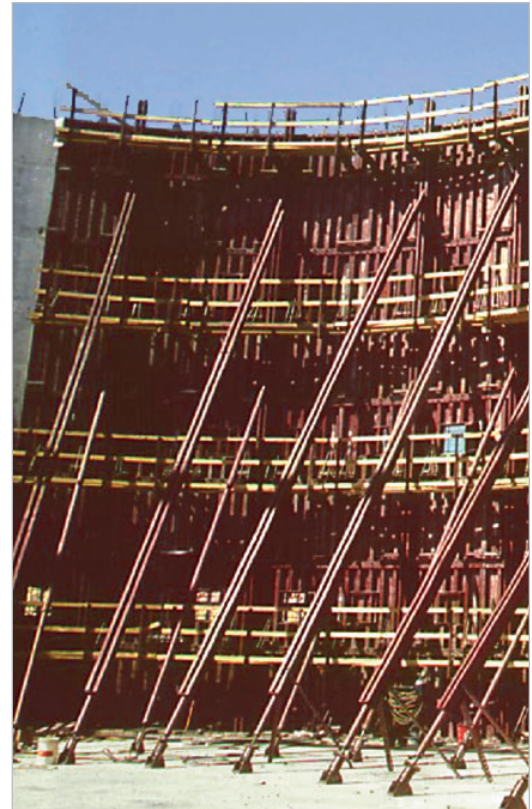
Because the steel skin plate flexes to form the desired arc, there's no "chording" effect evident in the poured concrete surface. Conventional panel systems produce form joint marks that require grinding and rubbing, but the Flex-Form system produces smooth concrete surfaces that require practically no finishing labor.

Fast and Simple Erection

Panels are typically delivered to the jobsite pre-assembled to the required radius. There are no expensive templates to build, no floppy panels to handle and no bolts to torque. You can start building the Flex-Form gang immediately.

If the job requires more than one radius, simply order extra rolled ribs for use with the same forms. Changeover is simple, done quickly by the forming crew on the site. The new rolled ribs set the forms to the new radius, speeding the gang assembly and further increasing productivity.





Stacking Panels

Panels can be stacked by bolting the top and bottom ribs of the adjacent forms with the 3/4" Speed Bolts and Nuts.

Void Panels

Rebar, pipe and other common form penetrations can be handled effectively with the interchangeable plywood-faced Void Panels.

Pour Door Panel

Concrete placement in large gangs can be controlled and consolidated by using the standard Pour Door Panel.

Walkway Brackets

Steel Walkway Brackets may also be bolted to the vertical stiffeners to provide workers safe access to the top of the forms.

Pipe Form Aligners

To provide vertical alignment, Pipe Form Aligners bolt directly to vertical stiffeners. Pipe Form Aligner have integral turnbuckles and telescoping extensions for lengths from 11'-1" to 20'-1".

Symons Soldier Beams

Available in 1'-6", 2', 3', 4', 8' and 12' lengths, Symons Soldier Beams can be used for alignment and bracing of Flex-Form gangs.

5" Steel Walers

Available in 4', 6', 8', 10', 12' and 16' lengths for vertical alignment and stability on extra high gangs.

65K She-Bolts or Taper Ties

High Capacity ties with a SWL of 32,500 lbs provide maximum tie spacing to reduce gang setting and stripping time. This system uses one-piece swivel wing nut that handle battered walls up to 10 degree without the use of special washers.

112K Super She-Bolts or 128K Super Taper Ties

Super She-Bolts are rated to 56,000 pounds. SWL at a 2:1 Factor of Safety or 112,000 lbs. ultimate load rating. The 128K Super Taper Ties are rated to a 64,000 lbs. safe working load or 128,000 lbs. ultimate load.

No Purchase Commitment

Every component in the Flex-Form forming system is rentable, including the fixed-radius ribs, ties and panels.



SYMONS[®]
BY DAYTON SUPERIOR

1125 Byers Road
Miamisburg, OH 45342
937-866-0711
888-977-9600
www.symons.com

THE POWER OF RED™

WF_1186000 / SYM99676
REV. 04/26

Copyright © 2026 Dayton Superior Corporation, All Rights Reserved.