



**THE
POWER
OF RED™**



**HI-LITE
12K ALUMINUM
SHORING FRAMES**

**CONCRETE
CONSTRUCTION
SOLUTIONS**





12K Aluminum Shoring Frames



The Hi-Lite 12k aluminum shoring frame system has a capacity of up to 53.4Kn (12,000lb) per leg using a safety factor of 2.5. The 1.8m x 1.2m (6' by 4') frame weighs 14.2Kg (31lb).

Hi-Lite 12K Aluminum Shoring System comes with an easy-to-handle design to go with the light weight. That means one worker might be able to do work that would require two or more if the material were steel or wood. Setting the frame with a crane or hand setting it are both available options.

High Durability

Aluminum frames resist damage. They are reusable and, despite being assembled and reassembled many times, they experience less on-site damage as workers find them easy to handle.

Highly Versatile

The Hi-Lite aluminum shoring frame will adapt to slopes or steps, whether they are at the top or bottom – or both at the same time. Swivel head screw jacks eliminate wedging. Almost any condition can be mastered using combinations of screw jacks, base plates and extension tubes. The adjustability of the system is the contractor's assurance that the project will proceed on schedule.

Low Maintenance and Handling Costs

Hi-Lite aluminum shoring frames are almost maintenance free. They do not rust and never require painting. Damage resistance increases their service life. Lower weight means less inventory and that leads to lower storage, transportation, and handling costs.

Product Highlights

- No more than 1/3 the weight of the comparable load bearing steel frame
- Capacity tested to safe working loads of up to 106.8 kN (24,000 lb) per frame with a safety factor of 2.5:1
- Designed to replace traditional 20K steel frame shoring and other modular systems
- Inter-bracing helps maintains full load capacity in high towers
- Snap-on Jet Locks make erection and dismantling fast, easy and safe
- Ledgers in one direction only, allow for efficient spacing of frames using cost effective cross bracing



Contact us for load capacities, strength-to-weight ratio, specifications, etc.



Hi-Lite 12K shoring frames are easily adjusted and attach safely and seamlessly to beams and stringers.





Project Highlights



**Cinéma Gaumont Disneyland
Paris, France**

PROJECT STATISTICS:

Slab Thickness: 0.46m (18"),
Slab Height: 10m-20m (32'-64')

PROJECT DESCRIPTION:

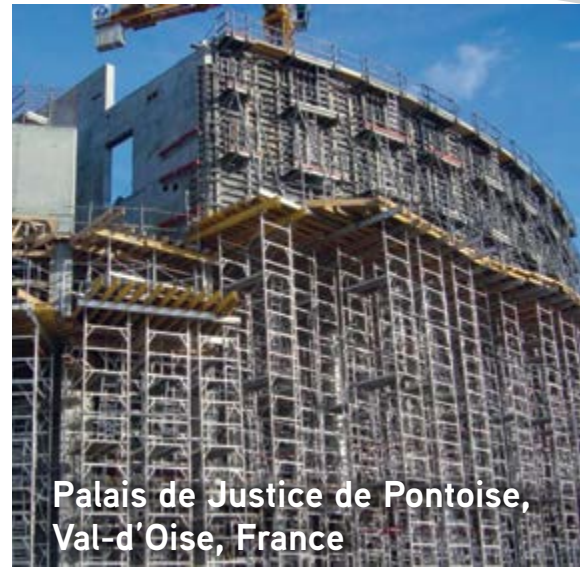
North American products in prestigious European projects

PROJECT CHALLENGES:

Heavy slabs, high in the air.

PROJECT RESULTS:

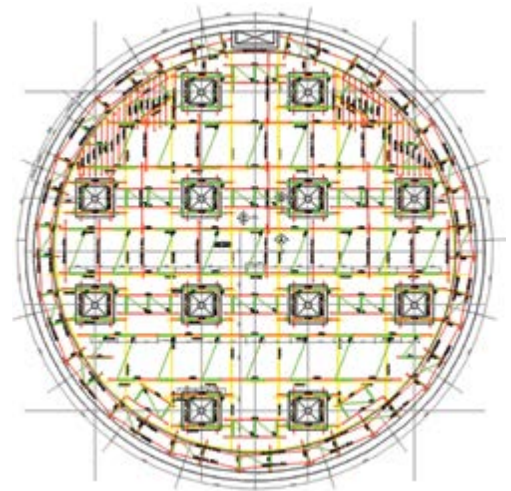
With the 12K system, frames were easily erected and dismantled by hand. Frames were easily climbed for fine adjustments under slab.



**Palais de Justice de Pontoise,
Val-d'Oise, France**



**Riverhead Digester,
Newfoundland, Canada**



PROJECT STATISTICS:

Slab Thickness: 0.3m-0.46m (12"-18"),
Slab Height: 12m (40'),
Slab Area: 730 sq m (7860 sq ft)

PROJECT DESCRIPTION:

12m (40') high ceiling height and 11m (36') high wall form

PROJECT CHALLENGES:

To support circular tank with sloping roof and sloping bottom and resist high lateral force while supporting 11m (36') high concrete wall.

PROJECT RESULTS:

With the 12K system, frames were easily erected and dismantled by hand. Frames were easily climbed for fine adjustment under slab.