



BUILDING STRENGTH™

**D/R HEAVY FORMING
SYSTEM**

**CONCRETE
CONSTRUCTION
SOLUTIONS**

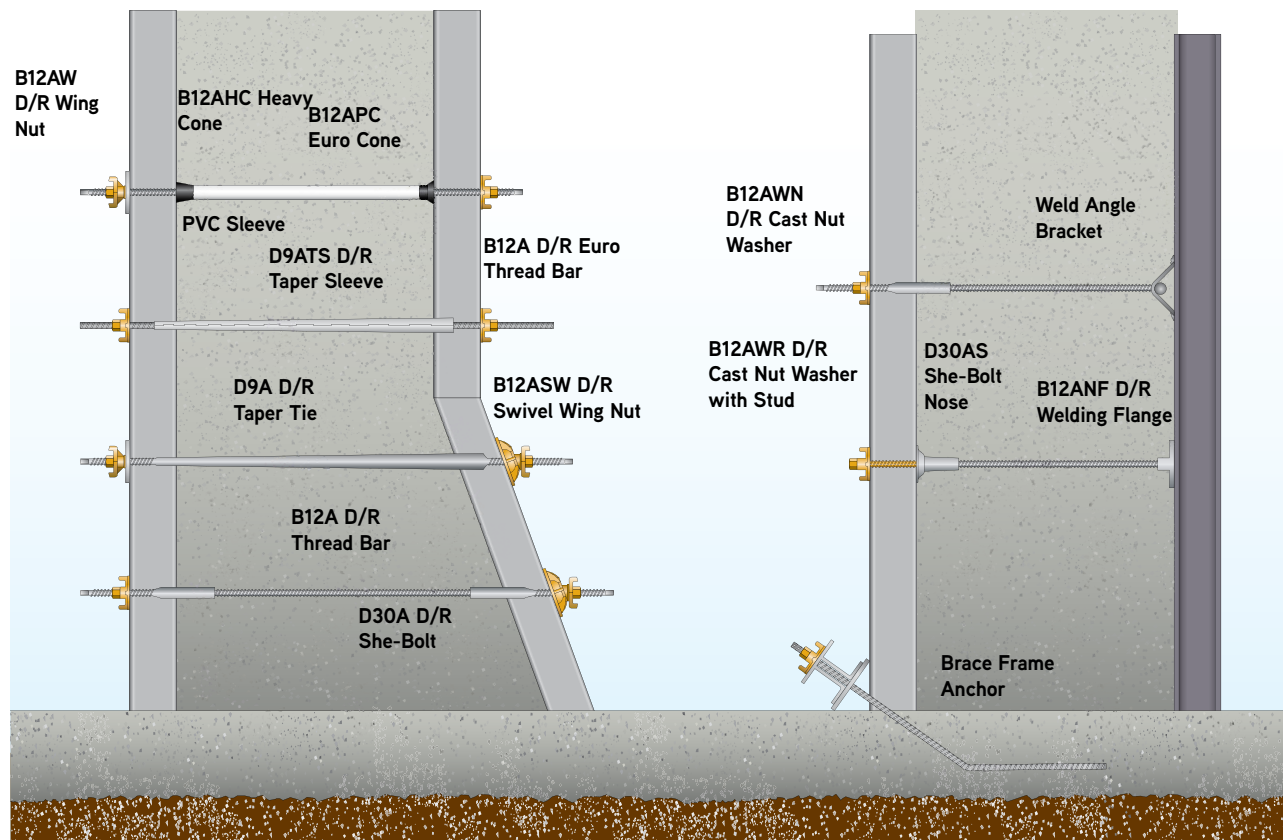
BROCHURE



DAYTON®
SUPERIOR

D/R Heavy Forming System products were developed to accommodate the heavy-duty requirements of the innovative European forming systems. Commonly called “Clamp Systems,” they require hardware and accessories that fit predetermined tie hole sizes and have the capacity to develop the higher form pressures required.

At the heart of the D/R Heavy Forming System is the D/R Thread. At 2½ threads per inch, it is fast, self-cleaning and durable. All products featured in this publication utilize this thread pattern to meet the required higher strengths.



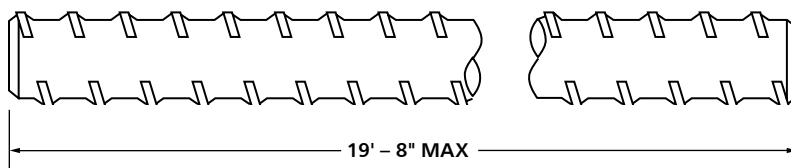
Brace Frame Anchor

The Brace Frame Anchor is designed for one-sided forming applications utilizing an embedded anchor. It is made from threaded D/R Euro Bar, providing the ability to develop the full load of the bar when properly embedded.



B12AD D/R Euro Thread Bar

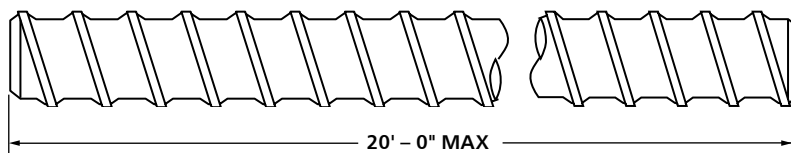
The Euro Thread Bar is a hot-rolled high strength steel with two flat sides in the thread pattern. This bar has been used in Europe on all types of projects for years. The flat sides provide self-cleaning and allow a gripping surface for turning the bar. Euro Thread Bar is available in 15mm ($\frac{5}{8}$ ") and 20mm ($\frac{7}{8}$ ") diameters and in standard in 19'-1" lengths. Euro Thread Bar is bendable.



TYPE	PRODUCT CODE	THREAD SIZE	LENGTH	SWL	WEIGHT LBS/FT ³
B12AD	127204	15mm ($\frac{5}{8}$ ")	19'-1"	21,300 lbs.	32.47
B12AD	127210	20mm ($\frac{7}{8}$ ")	19'-1"	38,800 lbs.	33.66

B12A D/R Thread Bar

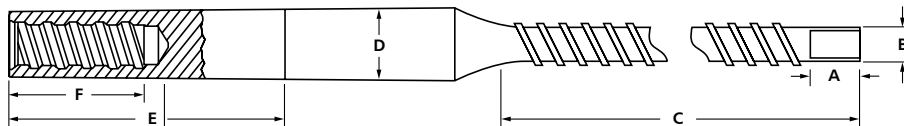
The D/R Thread Bar is a high strength, fast-acting, cold-rolled contour thread which provides interchangeability with other high strength bar systems. The threads are manufactured at $2\frac{1}{2}$ threads per inch which allow greater efficiency on the job site when installing and stripping. D/R Thread Bar is available in 15mm ($\frac{5}{8}$ "), 20mm ($\frac{7}{8}$ ") and 26mm (1") diameters. D/R Thread Bar can be field cut using a Carborundum blade.



TYPE	PRODUCT CODE	THREAD SIZE	LENGTH	SWL	WEIGHT LBS/FT ³
B12A	121715	15mm ($\frac{5}{8}$ ")	20'-0"	20,000 lbs.	1.00
B12A	121710	20mm ($\frac{7}{8}$ ")	20'-0"	32,000 lbs.	1.60
B12A	145430	26mm (1")	12'-0"	56,000 lbs.	2.67
B12A	145429	26mm (1")	5'-0"	64,000 lbs.	2.67

D30A D/R She-Bolt

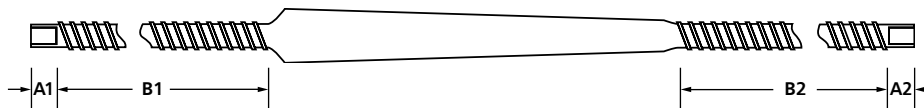
Dayton Superior's D/R Thread She-Bolt is manufactured from high strength steel. The nose section is tapered to ensure a quick release when stripping. The threaded turned down end has the same diameter threads as the inside tie rod. D/R She-Bolts are designed to fit European forming systems, but can also be used in conventional forming applications. The D/R thread (2½ threads per inch) is fast-acting thread, and interchangeable with other high strength bar systems. D30A D/R She-Bolts should be used with B12A D/R Thread Bar.



TYPE	PRODUCT CODE	SWL	INSIDE TIE ROD	EXTERNAL THREADS	LENGTH	A	B	C	D	E	F
D30A	123075	22,400 lbs.	15mm (5/8") D/R	15mm (5/8") D/R	18"	3/4"	19 32"	9 1/2"	1"	4"	2"
D30A	123077	22,400 lbs.	15mm (5/8") D/R	15mm (5/8") D/R	24"	3/4"	19 32"	15 1/2"	1"	4"	2"
D30A	123504	39,200 lbs.	20mm (7/8") D/R	20mm (7/8") D/R	18"	3/4"	25 32"	9 1/2"	1 1/4"	4"	3"
D30A	123506	39,200 lbs.	20mm (7/8") D/R	20mm (7/8") D/R	24"	3/4"	25 32"	15 1/2"	1 1/4"	4"	3"
D30A	145402	64,000 lbs	26mm (1") D/R	32mm (1 1/4") D/R	30"	1"	25 32"	18 1/2"	1 1/2"	5"	27/8"

D9A D/R Taper Tie

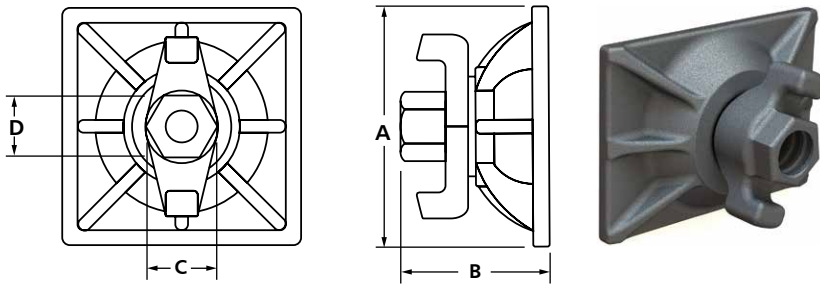
Dayton Superior's D/R Thread Taper Tie is manufactured from high strength steel. The Taper Tie system is extremely durable, and completely reusable — no expensive parts are left behind in the wall. Feed through installation permits both forms to be in place before the taper tie installation. The external threads on the large end are turned down, allowing the same diameter hardware to be used on both ends of the tie. The D/R thread (2½ threads per inch) is fast-acting thread, and interchangeable with other high strength bar systems.



THREAD	PRODUCT CODE	SWL	TAPER LENGTH	TAPER	OVERALL	A1	A2	B1	B2	WEIGHT LBS. EACH
15mm (5/8")	123765	18,750 lbs	1 3/16" to 5/8"	16"	41"	1/2"	1 1/2"	11 1/2"	11 1/2"	4.5
15mm (5/8")	123766	18,750 lbs	1 3/16" to 5/8"	24"	49"	1/2"	1 1/2"	11 1/2"	11 1/2"	5.2
15mm (5/8")	123953	18,750 lbs	1 3/16" to 5/8"	40"	65"	1/2"	1 1/2"	11 1/2"	11 1/2"	6.9
15mm (5/8")	125090	18,750 lbs	1" to 5/8"	16"	41"	1/2"	1 1/2"	11 1/2"	11 1/2"	4.8
15mm (5/8")	123510	18,750 lbs	1" to 5/8"	24"	49"	1/2"	1 1/2"	11 1/2"	11 1/2"	5.7
15mm (5/8")	123511	18,750 lbs	1" to 5/8"	32"	57"	1/2"	1 1/2"	11 1/2"	11 1/2"	6.6
20mm (7/8")	123512	32,000 lbs	1 1/4" to 7/8"	16"	42"	1"	1"	11 1/2"	11 1/2"	5.6
20mm (7/8")	123513	32,000 lbs	1 1/4" to 7/8"	24"	50"	1"	1"	11 1/2"	11 1/2"	9.4
20mm (7/8")	123514	32,000 lbs	1 1/4" to 7/8"	32"	58"	1"	1"	11 1/2"	11 1/2"	12.0
20mm (7/8")	145555	32,500 lbs	1 1/4" to 1"	19.5"	37"	1"	1"	9"	6 1/2"	8.15
20mm (7/8")	145556	32,500 lbs	1 1/4" to 1"	29.5"	47"	1"	1"	9"	6 1/2"	11
20mm (7/8")	145557	32,500 lbs	1 1/4" to 1"	39.5"	57"	1"	1"	9"	6 1/2"	13.85
20mm (7/8")	145558	32,500 lbs	1 1/4" to 1"	49.5"	67"	1"	1"	9"	6 1/2"	15.8
32mm (1 1/4")	145248	64,000 lbs	1 1/2" to 1 1/4"	25"	44"	1"	1"	8"	8"	15.7
32mm (1 1/4")	125249	64,000 lbs	1 1/2" to 1 1/4"	35"	54"	1"	1"	8"	8"	19.8
32mm (1 1/4")	145250	64,000 lbs	1 1/2" to 1 1/4"	45"	64"	1"	1"	8"	8"	24.0
32mm (1 1/4")	145251	64,000 lbs	1 1/2" to 1 1/4"	55"	74"	1"	1"	8"	8"	28.1
32mm (1 1/4")	145252	64,000 lbs	1 1/2" to 1 1/4"	65"	74"	1"	1"	8"	8"	32.1

B12ASW D/R Swivel Wing Nut

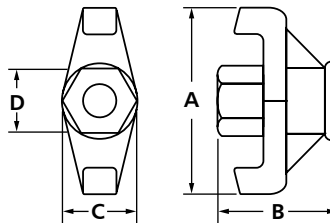
The Swivel Wing Nut is made from high strength malleable iron with 2½ threads per inch for use with the Euro and D/R Thread Bar. For added versatility, the it features a heavy duty, ribbed washer base in one assembly — reducing the number of working parts. The Swivel Wing Nut is made with electro galvanized finish per ASTM B633 SC1 Type II.



TYPE	PRODUCT CODE	THREAD SIZE	WASHER TYPE	A	B	C	D	SWL	WEIGHT LBS/EA
B12ASW	122021	15mm (5/8")	Square	4 1/16"	23/8"	13/8"	13/16"	21,900 lbs	2.80
B12ASW	F722110	15mm (5/8")	Rectangular	4" x 6"	25/8"	13/8"	13/16"	21,900 lbs	2.79
B12ASW	123606	20mm (7/8")	Square	4 1/16"	23/8"	15/8"	17/16"	39,200 lbs	2.95
B12ASW	145554	20mm (7/8")	Round	7"	2.47"	15/8"	1.24"	32,500 lbs	5.94
B12ASW	145181	32mm (1¼")	Rectangular	5" x 7"	3.25"	—	—	64,000 lbs	7.09

B12AW D/R Wing Nut

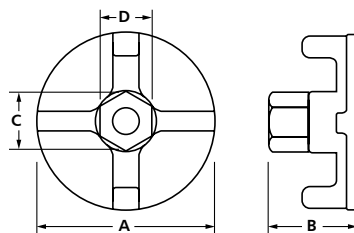
The Wing Nut is a high strength malleable iron nut with 2½ threads per inch for use with the Euro and D/R Thread Bar. This wing nut can be used with a flat plate or battered washer. The Wing Nut is made with electro galvanized finish per ASTM B633 SC1 Type II.



TYPE	PRODUCT CODE	THREAD SIZE	A	B	C	D	SWL	WEIGHT LBS/EA
B12AW	122020	15mm (5/8")	39/16"	23/8"	13/8"	13/16"	21,900 lbs.	0.91
B12AW	123605	20mm (7/8")	39/16"	23/8"	15/8"	17/16"	39,200 lbs.	1.51

B12AWN D/R Cast Nut Washer

The Cast Nut Washer is made of malleable iron and threaded with 2½ threads per inch for use with the Euro and D/R Thread Bar. It is designed to distribute the applied loads over the form members, combining the advantages of a washer and nut into one piece. The Cast Nut is made with electro galvanized finish per ASTM B633 SC1 Type II.



TYPE	PRODUCT CODE	THREAD SIZE	A	B	C	D	SWL	WEIGHT LBS/EA
B12AWN	127205	15mm (5/8")	4"	2"	1 5/8"	1 3/8"	21,900 lbs.	1.64
B12AWN	127211	20mm (7/8")	4"	2"	1 5/8"	1 3/8"	39,200 lbs.	1.94

B12ANF D/R Welding Flange

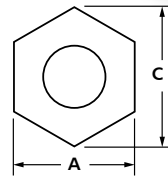
Dayton Superior's Welding Flange can be used with both the Euro and D/R Thread Bar. It is designed to be used in one-sided forming applications by welding it to a soldier beam, or piling to attach the form tie.

Product Code: 127207 (15mm only)



B12ASN D/R Thread Steel Hex Nut

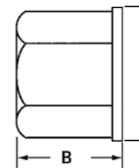
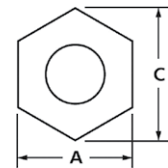
High strength steel, fast-acting contour thread accessories used with the Euro Bar, D/R Thread Bar, D9A D/R Thread Taper Tie or D30A D/R Thread She-Bolts for securing and spacing clamp type forms.



TYPE	PRODUCT CODE	THREAD SIZE	A	B	C	SWL	WEIGHT LBS/EA
B12ASN	122018	15mm (5/8")	1 1/16"	1"	1 3/8"	20,130 lbs.	0.24
B12ASN	123604	20mm (7/8")	1 1/16"	1 3/8"	1 5/8"	26,380 lbs.	0.25

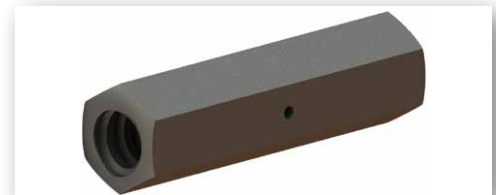
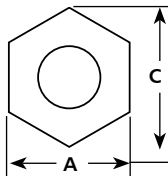
B12ACN D/R Thread Cast Hex Nut

High strength steel, fast-acting contour thread accessories used with the Euro Bar, D/R Thread Bar, D9A D/R Thread Taper Tie or D30A D/R Thread She-Bolts for securing and spacing clamp type forms.



TYPE	PRODUCT CODE	THREAD SIZE	A	B	C	D	SWL	WEIGHT LBS/EA
B12ACN	122017	15mm (5/8")	1 1/16"	2"	1 3/8"	1 1/2"	21,900 lbs.	0.23
B12ACN	123603	20mm (7/8")	1 1/16"	2 5/8"	1 5/8"	1 3/4"	39,200 lbs.	0.86

B12AC D/R Thread Hex Coupler



TYPE	PRODUCT CODE	THREAD SIZE	A	B	C	SWL	WEIGHT LBS/EA
B12AC	122019	15mm (5/8")	1 1/16"	3 3/16"	1 3/8"	21,900 lbs.	0.89
B12AC	123607	20mm (7/8")	1 1/16"	5 1/2"	1 5/8"	38,700 lbs.	1.80

Other Accessories

B12AHC Heavy Cones

Product Code (HD): 127596 (15mm), 127597 (20mm)

Euro Cone (Formerly B12APC)

Product Code: F722001 (15mm)

D30AS Setting She Bolt Cone

Product Code: 124339 (15mm)

Weld Angle Bracket

B12AB D/R Bolt

Product Code: 127623 (15mm)

PVC Sleeves

Use Schedule 40 Nominal size 3/4" for 5/8" B12AHC Cones, and Schedule 40 Nominal size 1" for 7/8" for B12AHC Cone.

Product Code: 145408 — 3/4" Nominal size Schedule 40 sleeve 10' long.





INNOVATION CENTER

REAL-WORLD SOLUTIONS INSPIRED BY YOUR VISION

Your vision is to take concrete construction to new heights. We turn that vision into real-world solutions through precision research and development, testing and technology.

Together we are redefining what is possible in the concrete construction industry. Our Innovation Center is comprised of:

- A state of the art chemical lab
- A full-featured mechanical test facility
- Product demonstration areas
- Contemporary training and meeting areas

Bring us your ideas and we will deliver your solution.

Call today: **888-977-9600**

View the YouTube video to
learn more about Dayton Superior.





DAYTON[®] **SUPERIOR**

1125 Byers Road
Miamisburg, OH 45342
937-866-0711
888-977-9600
WWW.DAYTONSUPERIOR.COM



BUILDING STRENGTH™

DS# #
01/16

Copyright © 2016 Dayton Superior Corporation. All Rights Reserved.