



# THE POWER OF RED™

**DROP HEAD**

**CONCRETE  
SHORING  
SYSTEM**

**BROCHURE**



**SYMONS®**  
BY DAYTON SUPERIOR



**The Drop Head System's versatility and efficiency is designed around contractors' needs. The decking system is the most cost effective solution in today's marketplace.**

During development of our system, leading contractors expressed their forming needs and the need for improving labor productivity. Information gathered during this process was vital in designing a simple system that can handle all phases of the contractors' forming needs in a cost effective manner.

Our unique relationship with our contractors ensures a continual feedback loop which improves both the efficiency of our product and quality of our service.

Dayton Superior's engineering department has years of experience in designing and detailing Commercial, Industrial and Heavy construction projects. We generate high quality drawings that are to scale, detailed with special conditions, complete with color coded plan views and sections.

**The posts used with the Drop Head System has the widest height range in the industry.**

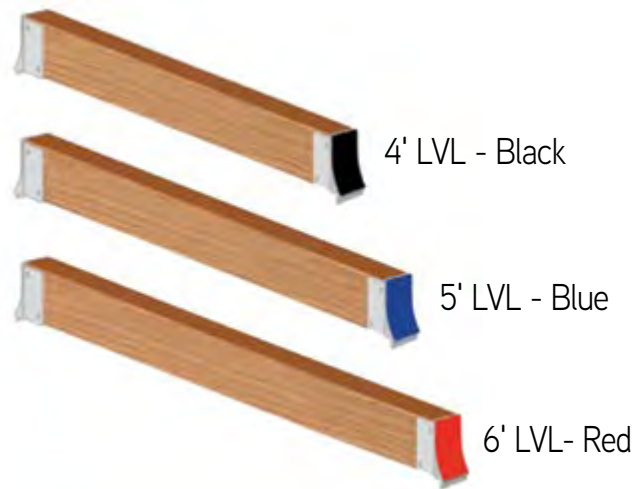
## COMPONENT SUMMARY

Drop Head's modular deck system uses color coding for easy identification during assembly and stripping.

### Ledger Color Codes

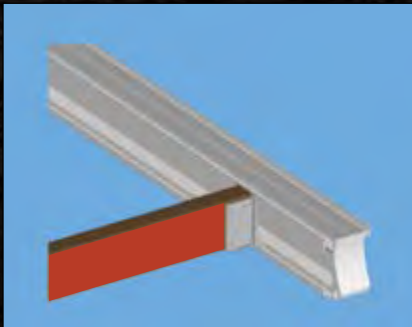


### LVL Color Codes

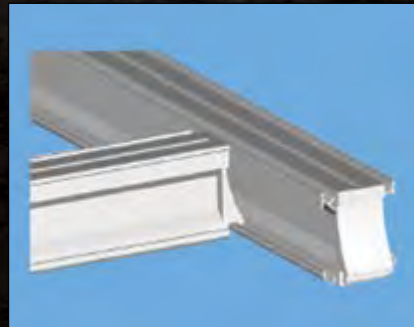


## *Ease of use*

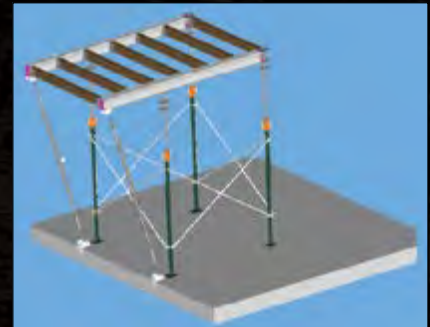
Our lightweight components are designed with ease of use in mind.



6' LVL - 10' Ledger Connection



Ledger- Ledger Connection



Posts can be X-braced with standard steel cross-braces for stability and stand-alone towers with cantilevers utilizing diagonal safety struts.



Single posts allow clean unbraced areas for material movement and easy access.



Symons ShorFast™ can be utilized in high-bay applications over 12'-8" in height.



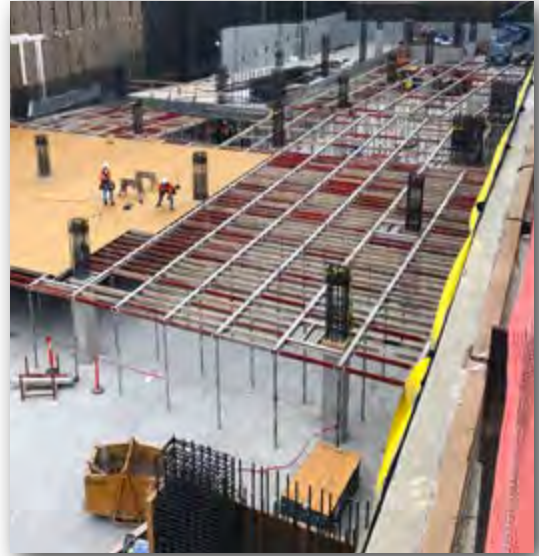
Standard flatbed with 6,000 sq. ft. of shoring.



- Post heights range from 6'-8" to 12'-8"
- Posts have a 3.0 : 1 Safety Factor
- System can support concrete slabs up to 18" thick

Drop Head equipment is shipped in storage carts which can be moved throughout the jobsite without the use of a crane.

Descriptions	Quantity Per Pack	Weight	Weight Per Rack
Dayton Prime Post	50	73lb	3733lb
#3 Drop Head Post	60	58lb	2983lb
10' Ledgers	33	67lb	2311lb
8' Ledgers	33	54lb	1865lb
6' Ledgers	33	41lb	1436lb
4' LVL Joist	68	14.5lb	1069lb
5' LVL Joist	68	15.5lb	1137lb
6' LVL Joist	68	18.5lb	1341lb



1. 6'-8" to 12'-8" single post capability
2. Round wedged drop heads allow ledgers and joists to be stripped while leaving undisturbed reshores in place. 70% Material recovery 1 day after pouring possible - only vertical posts stay in place as reshores
3. Slabs with slopes up to 12% can be shored and safely braced to resist lateral loads
4. 8' x 6' post grid (48 sq. ft.) requires 25% fewer posts than European 2m x 2m (approx. 36 sq. ft.) post grids
5. Up to 18" slabs can be supported with standard equipment
6. Fully braced 4' wide cantilevers allow for 3' wide walkways beyond slab edge
7. All parts are color coded to match Dayton Superior provided erection drawings
8. 5000 to 6000 sq. ft. of equipment can be loaded on a standard flatbed - lower freight costs
9. All posts have attached Jet-Loks so standard steel cross braces can be utilized to stabilize the posts into 4-legged towers for safety during erection of our system — no tripods or wood bracing required
10. Field service technicians available to assist in initial erection and stripping of equipment
11. "Field Friendly" detailed delivery list with line item inventory, part description and color photographs
12. Standard components can be integrated with Symons standard ShorFast™ to construct high bay conditions, eliminating the need to employ an additional forming system





1125 Byers Road  
Miamisburg, OH 45342  
937-866-0711  
888-977-9600

# THE POWER OF RED™

REV. 03/24  
SYM200-1

Copyright © 2024 Dayton Superior Corporation, All Rights Reserved.