



INTRODUCTION

Symons® Max-A-Form STS forming system is the Industry leader in rentable, self-spanning, steel formwork. Its superior pour pressure and moment capacities result in labor and material savings for the end user. The all-steel, welded frame make it the ideal choice for gang forming tall structural walls, pouring tieless columns, or for supporting concrete over long spans without shoring or custom equipment. The proprietary design and manufacturing process result in a superior finish, pour after pour.

STOCK PANEL OFFERING (WIDTHS – FT.):

12', 10', 9', 8', 7', 6', 5', 4', 3.5', 3', 2.5', & 2'

STOCK PANEL OFFERING (LENGTHS – FT.):

1', 2', 3', 4', 5', 6', 7', 8', 10', 12'

***NOTE: height and width options vary by width and vary within our new sale vs. rental fleet offering*

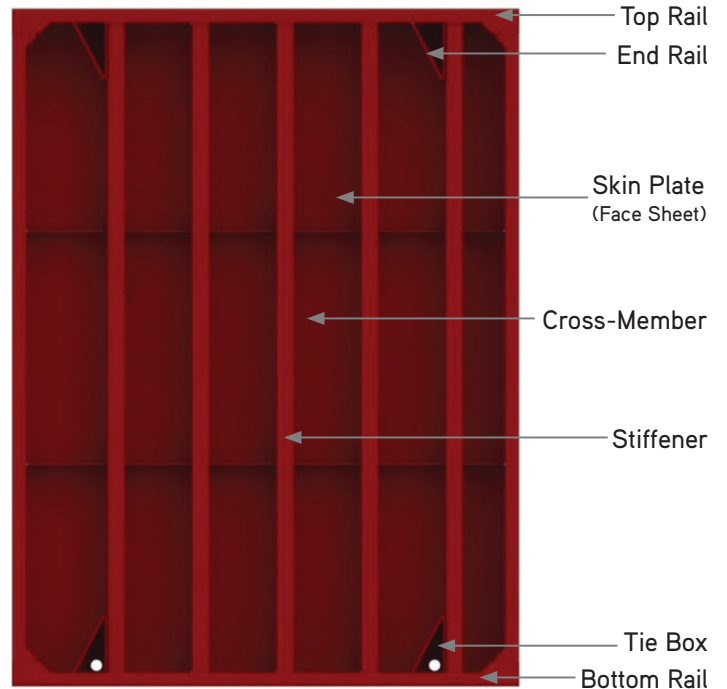
PANEL CONCRETE POOR PRESSURE RATINGS:

2 Ft. – 8 Ft. = 2,000 lbs.

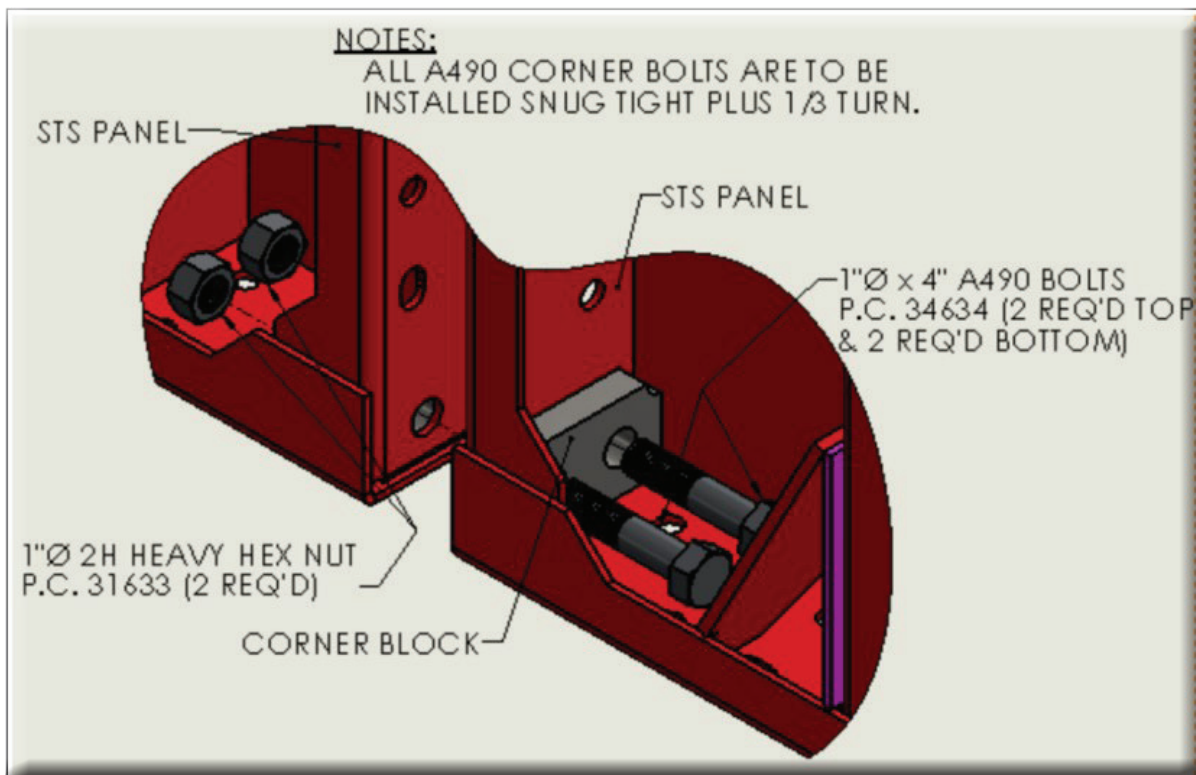
9 Ft. Panels = 1,700 lbs. ; 10 Ft. Panels = 1,600 lbs.;

12 ft. Panels = 1,300 lbs.

PANEL NOMENCLATURE



PANEL TO PANEL CONNECTION DIAGRAM



WF_1186000

KEY SYSTEM HARDWARE

STS Outside Corner Angle



A490 1" x 4" Speed Bolt
Part# 34364

- Secures two STS Panels together



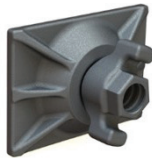
2H Heavy Hex Nut
Part# 31633

- Secures A490 Bolt that connects two panels



D9A Super Taper Tie

- 32 MM Thread
- 128,000 lbs. Ultimate Load
- 2:1 F.O.S.



5" x 7" Tie Plate
- Secures D9A Taper Tie to the STS Panels

CONCRETE POUR PRESSURE CHART

RATE OF PLACEMENT R, FT. PER HR.	90°F		80°F		70°F		60°F		50°F		40°F	
	WALLS	COLUMNS	WALLS	COLUMNS	WALLS	COLUMNS	WALLS	COLUMNS	WALLS	COLUMNS	WALLS	COLUMNS
	1	66.3	250	728	263	810	279	920	300	1074	330	1305
2	694	350	763	375	850	407	967	450	1130	510	1375	600
3	726	450	798	488	890	536	1013	600	1186	690	1445	825
4	757	550	833	600	930	664	1060	750	1242	870	1515	1050
5	788	650	868	713	970	793	1107	900	1298	1050	1585	1275
6	816	750	903	825	1010	921	1153	1050	1354	1230	1655	1500
7	850	850	938	938	1050	1050	1200	1200	1410	1410	1725	1725
8	881	950	973	1050	1090	1179	1247	1350	1466	1590	1795	1950
9	912	1050	1008	1163	1130	1307	1293	1500	1522	1770	1865	2175
10	943	1150	1043	1275	1170	1436	1340	1650	1578	1950	1935	2400
11	974	1250	1078	1388	1210	1564	1387	1800	1634	2130	—	2625
12	1006	1350	1113	1500	1250	1693	1433	1950	1690	2310	—	2850
13	1037	1450	1148	1613	1290	1821	1480	2100	1746	2490	—	—
14	1068	1550	1183	1725	1330	1950	1527	2250	1802	2670	—	—
15	1099	1650	1218	1838	1370	2079	1573	2400	1858	2850	—	—

- NOTES:
- DATA PROVIDED IN THIS TABLE IS FOR INFORMATIONAL PURPOSES ONLY. FINAL DESIGN SHALL BE BASED ON ACI 347R-14.
 - INDICATED CONCRETE PRESSURE VALUES MUST BE MULTIPLIED BY APPROPRIATE UNIT WEIGHT (Cw) AND CHEMISTRY (Cc) COEFFICIENTS AS DEFINED IN TABLES 2 AND 3 BELOW.
 - THIS TABLE IS ONLY VALID FOR CONCRETE WITH A SLUMP LESS THAN OR EQUAL TO 7" MEASURED AFTER THE ADDITION OF ALL ADMIXTURES.
 - INTERNAL VIBRATION SHALL BE LIMITED TO A DEPTH OF NO MORE THAN 4', NO OTHER MEANS OF VIBRATION ARE PERMITTED.
 - WALLS ARE DEFINED AS VERTICAL ELEMENTS WITH AT LEAST ONE PLAN DIMENSION EXCEEDING 6'-6".
 - MAXIMUM PRESSURE FOR WALLS LESS THAN 14' IN HEIGHT WITH A POUR RATE LESS THAN 7 FT/HR MAY BE CONSIDERED COLUMNS.
 - COLUMNS ARE DEFINED AS VERTICAL ELEMENTS WITH NO PLAN DIMENSION EXCEEDING 6'-6".
 - RE-VIBRATION OF SETTING CONCRETE WILL CAUSE THE CONCRETE TO REVERT BACK TO A LIQUID STATE. IF RE-VIBRATION IS REQUIRED, THE LATERAL PRESSURE MUST BE CALCULATED AS FULL LIQUID HEAD TO THE DEPTH OF THE RE-VIBRATION.

TIE LOAD RATINGS

Part Code #	Description	Taper Length	Taper Size	Overall Length	Thread Size	Ultimate Load	Safety Factor	Safe Working Load
145248	44" Super Taper Tie 1.5" to 1.25"	25"	1.5" to 1.25"	44"	32 MM	128,000 lbs.	2 to 1	64,000 lbs
145249	54" Super Taper Tie 1.5" to 1.25"	35"	1.5" to 1.25"	54"	32 MM	128,000 lbs.	2 to 1	64,000 lbs
145250	64" Super Taper Tie 1.5" to 1.25"	45"	1.5" to 1.25"	64"	32 MM	128,000 lbs.	2 to 1	64,000 lbs
145251	74" Super Taper Tie 1.5" to 1.25"	55"	1.5" to 1.25"	74"	32 MM	128,000 lbs.	2 to 1	64,000 lbs
145252	84" Super Taper Tie 1.5" to 1.25"	65"	1.5" to 1.25"	84"	32 MM	128,000 lbs.	2 to 1	64,000 lbs



Part Code #	Description	Taper Length	Taper Size	Overall Length	Thread Size	Ultimate Load	Safety Factor	Safe Working Load
145555	37" 20 MM Taper Tie 1"-1 1/4" (D9A)	19.5	1" to 1.25"	37"	20 MM (.787")	65,000 lbs.	2 to 1	32,500 lbs.
145556	47" 20 MM Taper Tie 1"-1 1/4" (D9A)	29.5	1" to 1.25"	47"	20 MM (.787")	65,000 lbs.	2 to 1	32,500 lbs.
145557	57" 20 MM Taper Tie 1"-1 1/4" (D9A)	39.5	1" to 1.25"	57"	20 MM (.787")	65,000 lbs.	2 to 1	32,500 lbs.
145558	67" 20 MM Taper Tie 1"-1 1/4" (D9A)	49.5	1" to 1.25"	67"	20 MM (.787")	65,000 lbs.	2 to 1	32,500 lbs.
145554	20MM Swivel Wing Nut w/ 7" DIA Tie Plate	N/A	N/A			65000 lbs.	2 to 1	32500 lbs.

Part Code #	Description	Taper Length	Taper Size	Overall Length	Thread Size	Ultimate Load	Safety Factor	Safe Working Load
123504	18" 20 MM She Bolt	N/A	N/A	18"	7/8" or .875"	78,400 lbs.	2 to 1	39,200 lbs.
123506	24" 20 MM She Bolt	N/A	N/A	24"	7/8" or .875"	78,400 lbs.	2 to 1	39,200 lbs.
145402	112K 32 MM She Bolt	N/A	N/A	30"	32 MM	112,000 lbs.	2 to 1	56,000 lbs.