

TECHNICAL DATA SHEET

DESCRIPTION

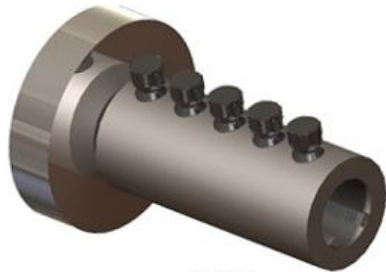
The D251L and D252L Bar Lock End Anchor is used to provide reinforcing steel anchorage in concrete. It consists of a thick walled tube, specially designed lock shear bolts, serrated grip rails and a welded, headed disc. The D251L and D252L are made from USA melted and rolled steel.

APPLICATION

The D251L and D252L Bar Lock End Anchors are used to provide embedment anchorage.

PRODUCT SPECIFICATION

- Rebar sizes #4 (13mm) through #18 (57mm)
- Available in plain, epoxy coated, or galvanized finish



D251L



D252L

FEATURES

- Quick and easy installation
- No bar end preparation
- Installation at the job site
- Net bearing area of 4Ab

BENEFITS

- Saves time and money
- No fabrication required
- One product for all applications

HOW TO SPECIFY

Specific:

Mechanical connections shall be Bar Lock® Rebar Splices as manufactured by Dayton Superior Corp.

Generic:

The mechanical connection shall meet building code requirements of developing in tension and compression as required by _____ (insert name here). The mechanical connection shall be made from lock shear bolt couplers with serrated gripping rails manufactured from high quality steel. All couplers shall be installed per the manufacturer's approved procedures.

TECHNICAL DATA

D251L Bar Lock® L-Series End Anchor Technical Data Chart				
Size	Outside Dia. (barrel) in.	Outside Dia. (anchor) in.	Length (in.)	Bolt Qty.
#4 [13mm]	1.315	1.750	3.585	3
#5 [16mm]	1.661	2.000	4.025	3
#6 [19mm]	1.902	2.375	4.954	4
#7 [22mm]	1.900	2.875	5.882	5
#8 [25mm]	2.244	3.250	7.392	5
#9 [29mm]	2.898	3.625	7.188	4
#10 [32mm]	2.898	4.250	8.510	5
#11 [36mm]	3.118	4.500	9.830	6
#14 [43mm]	3.500	5.375	11.528	7
#18 [57mm]	4.290	7.250	17.875	12

D252L Bar Lock® L-Series End Anchor Technical Data Chart				
Size	Outside Dia. (barrel) in.	Outside Dia. (anchor) in.	Length (in.)	Bolt Qty.
#4 [13mm]	1.315	3.000	4.318	3
#5 [16mm]	1.661	3.750	4.838	3
#6 [19mm]	1.902	4.250	5.829	4
#7 [22mm]	1.900	4.250	6.882	5
#8 [25mm]	2.244	5.250	8.205	5
#9 [29mm]	2.898	6.500	7.936	4
#10 [32mm]	2.898	6.500	9.383	5
#11 [36mm]	3.118	7.000	10.768	6
#14 [43mm]	3.500	8.000	12.341	7
#18 [57mm]	4.290	10.000	19.479	12

APPROVALS / COMPLIANCE

- ASTM A970 Class A
- ACI 318
- State Departments of Transportation
- AASHTO
- International Building Code (IBC)
- IAPMO UES Listed ER-345 (#4-#11, #14)

TECHNICAL DATA SHEET

INSTALLATION

1. Insert the end of the rebar into the coupler until it bottoms against face of anchor.
2. Holding the rebar in place, tighten all the bolts until they are hand tight against the rebar.
3. In a random, alternating pattern, tighten all bolts to approximately 50% of the specified bolt torque value.
4. In a random, alternating pattern, tighten all bolts to approximately 75% of the specified bolt torque value.
5. In a random, alternating pattern, tighten all bolts until all the heads of the bolts shear off.

Note:

A. Prior to bolt tightening, the serrated rails MUST remain aligned in the same position as they were manufactured. If they are damaged or knocked out of alignment while positioning, installation MUST cease and a new coupler used.

B. Bolt tightening MUST be done in a random alternating pattern similar to tightening the lug nuts on an automobile wheel.

C. A high-quality, 1" - pneumatic drive, impact wrench with at least 100 psig air flow and 185 CFM of delivered air through a no less than 0.75" hose MUST be used for installation.

RELATED PRODUCTS

- D250SCA Bar Lock® Couplers

ORDERING INFORMATION

BAR LOCK® 251 L-SERIES END ANCHORS - BLACK

Product Code	Description	Weight
400440	#4 [13MM]	2.00 LB
400441	#5 [16MM]	2.20 LB
400442	#6 [19MM]	3.40 LB
400443	#7 [22MM]	4.90 LB
400444	#8 [25MM]	7.40 LB
400445	#9 [29MM]	10.50 LB
400446	#10 [32MM]	13.50 LB
400447	#11 [36MM]	16.75 LB
400448	#14 [43MM]	27.00 LB
400449	#18 [57MM]	57.00 LB

BAR LOCK® 252 L-SERIES END ANCHORS - BLACK

Product Code	Description	Weight
145790	#4 [13MM]	2.07 LB
145791	#5 [16MM]	3.76 LB
145792	#6 [19MM]	5.65 LB
145793	#7 [22MM]	6.71 LB
145794	#8 [25MM]	10.70 LB
145795	#9 [29MM]	19.09 LB
145796	#10 [32MM]	22.13 LB
145797	#11 [36MM]	27.93 LB
145798	#14 [43MM]	40.46 LB
145799	#18 [57MM]	86.451 LB

MANUFACTURER

Dayton Superior Corporation
 1125 Byers Road
 Miamisburg, OH 45342
 Customer Service: 888-977-9600
 Technical Services: 877-266-7732
 Website: www.daytonsuperior.com

WARRANTY (ACCESSORIES)

Limited Warranty. Dayton warrants, for a period of 60 days from the date of shipment (three years from the date of shipment in the case of formwork, excluding any consumable Products included with such formwork), that Products and any associated application drawings and engineering services provided by Dayton ("Ancillary Services") will be free from defects in material and workmanship and, in the case of custom designed formwork, that the formwork will meet the specifications set forth in the design drawings approved by Dayton and Customer. Any claim under this warranty must be made in writing within such warranty period. If any Product and/or Ancillary Service covered by a timely claim are found to be defective, Dayton will, within a reasonable time, make any necessary repairs or corrections or, at Dayton's option, replace the Product. Unless pre-authorized by Dayton in writing, Dayton will not accept any charges for correcting defects or accept the return of any Product. This warranty will not apply to any Products that have been subjected to misuse, neglect, storage damage, misapplication, accident or any other damage caused by any person other than Dayton, or that have not been maintained in accordance with Dayton's specifications. THIS LIMITED WARRANTY IS IN LIEU OF ALL OTHER WARRANTIES AS TO THE PRODUCTS AND ANCILLARY SERVICES. DAYTON MAKES NO OTHER WARRANTIES OR GUARANTEES, EXPRESS OR IMPLIED, INCLUDING ANY WARRANTY OF MERCHANTABILITY, FITNESS FOR A PARTICULAR PURPOSE OR OTHERWISE. THE REMEDIES SET FORTH IN THIS SECTION ARE CUSTOMER'S EXCLUSIVE REMEDY FOR BREACH OF WARRANTY.