



**PERFORM  
WITH  
PRECISION™**

**MAGNETIC PRODUCTS  
FOR PRECASTING**

CONCRETE  
CONSTRUCTION  
SOLUTIONS

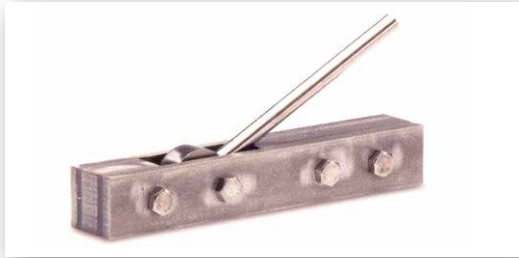
**BROCHURE**

 **DAYTON<sup>®</sup>  
SUPERIOR**



## ON/OFF MAGNETS

- Strong adhesion and shear capacity -650# to 2500# adhesion
- Easy to turn on or off using 5/8" wrench with 900, 1/4 turn of end rotor
- Magnet attraction only on bottom of magnet
- Accepts standard top adapters or specialty adapters provided by Dayton Superior



## CAM MAGNETS

- Magnet is always on but easy to release from steel using built-in cam release arm
- Magnet attraction along sides and bottom
- Available in different styles: Flat, Floating, Hole-Former, Notch
- Strong adhesion and shear capacity for small magnet up to 1000# adhesion



## BUTTON MAGNETS

- 1 Ton and 2.5 Ton Standard Adhesion Capacities in stock — other sizes available
- Easy push down button engages magnet and easy release from steel using button and release tool
- Can fabricate special attachment mechanisms to forms
- Release tool available to reduce labor



## LOAF MAGNETS

- Standard sizes 3", 5", and 11" — special sizes available
- Magnet is always on but can be released from steel using separate release arm
- Used in many applications including inside steel rails and securing wood forms in place
- Can fabricate special attachment mechanisms



## STEEL RAILS

- Typical 2" tall and 4" height steel rails, 2.3" width
- 11 gauge material to withstand concrete pressure
- Standard 8' sections — easy to cut in plant
- Recommended 3 magnets per piece — both ends and midpoint



## FORM ACCESSORIES

- Steel Forms 4", 6", 8" 10" height and 10' lengths
- Attachment brackets for magnet to form
- Custom brackets to your form and /or wood forms
- "Window" forms for prestress strands



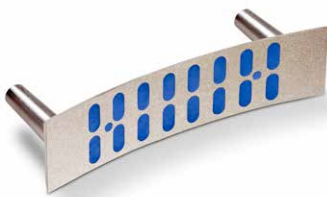
### STEEL CHAMFER

- Chamfer Strip stock sizes = 1/2", 3/4", 1" fillet
- Strong pull and shear capacity due to magnet installation methods — magnets available one face or two face
- Sold in 10 lengths
- Shipped and stored in PVC tubing, 2 magnet strips (20') per tube

### STEEL REVEAL

- Reveal strip stock sizes = 1/2", 3/4", 1" fillet — custom sizes available
- Strong pull and shear capacity due to magnet installation methods
- Sold in 10' lengths
- Shipped and stored in PVC tubing, 2 magnet strips (20') per tube

## Manhole Step Magnets



### FLAT WALL

- Sizes available for flat walls for 12", 16", and 24" steps
- Step pins available for all step manufacturer's different size products
- Separate tool used to remove step pin assembly from concrete
- Eliminates need to drill holes in core for step pins

### RADIUS WALL

- Sizes available for all different diameter manholes
- Step pins available for all step manufacturer's different size products
- Separate tool used to remove step pin assembly from concrete
- Eliminates need to drill holes in core for step pins



### COIL INSERTS

- 1/2", 3/4", 1", 1-1/4", and 1-1/2" sizes available for coil thread
- 1 piece or 2 piece design
- Socket end for easy removal



### FERRULE INSERT MAGNETS

- 1/4" TO 1-1/4" diameters available NC thread
- 1 piece or 2 piece design
- Socket end for easy removal



### DBSAE DOWEL BAR MAGNETS

- 1/4" to 1-1/4" diameters available NC thread
- 1 piece or 2 piece design
- Socket end for easy removal

## Utility Pipe Magnets



### HOLE FORMERS & DUCK MAGNETS

- Sizes available to fit into any size block-out, hole former or mandrel
- Different magnetic holding strengths available
- Eliminates the need to drill opening in concrete after it has been cast, which is a timely and expensive operation



### BOOT GASKETS

- Included is magnet with Cam Release Arm
- Special fabricated attachment mechanisms available
- Available for any size boot gasket
- Available in hinged model for 90 degree attachment





### P014S SWIFT LIFT® MAGNETS

- Enclosed in urethane one piece void former for 2 Ton, 4 Ton, and 8 Ton Swift Lift Anchors
- Magnet circuits have tapped holes for bolting and use with wood side rails
- Stronger and more durable
- Steel Magnetic Plates available to fit into all P56PL Urethane Recess Plugs



### P104F FLEET-LIFT™ MAGNETS

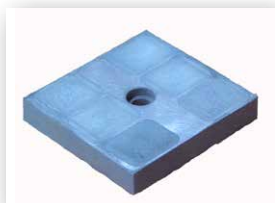
- Enclosed in urethane one piece void former for 2 Ton, 4 Ton, and 8 Ton Fleet Lift Anchors
- Magnet circuits have tapped holes for bolting and use with wood side rails
- Stronger and more durable
- Steel Magnetic Plates available to fit into all P89 Urethane Recess Plugs



### P104U UTILITY ANCHOR MAGNETS

- Enclosed in urethane one piece void former for .444 and .671 Utility Anchors
- Magnet circuits have tapped holes for bolting with wood side rails
- Stronger and more durable
- Steel Magnetic Plates available to fit into all P76 Urethane Recess Plug

## Specialty Magnets



### WOOD ATTACHMENT MAGNET

- Recess magnet into wood reveal or boxout
- Easy attachment to wood with common wood screws
- Secured wood piece to steel bed
- Cost and labor savings



### PVC PIPE ATTACHMENT MAGNET

- Pipe Holding Magnets — Light Duty Urethane
- Pipe Holding Magnets — Heavy Duty Steel

### OTHER MAGNET APPLICATIONS

- Styrofoam Holding Magnets
- Grout Sleeve Magnets
- Flange Connector Magnets
- Custom for your applications



**DAYTON**<sup>®</sup>  
**SUPERIOR**

1125 Byers Road  
Miamisburg, OH 45342  
937-866-0711  
888-977-9600

**PERFORM  
WITH  
PRECISION™**

DS7  
06/16

Copyright © 2016 Dayton Superior Corporation, All Rights Reserved.