



## Symons Forming and Shoring Systems

## BUILDING STRENGTH



- Adjustable Column
- Aluminum Beam Gang
- DeckFast™
- Flex-Form®
- Form Liner
- FormRight™
- FrameFast™
- Garage Beam
- Max-A-Form®
- Median Barrier
- One-Sided Forming
- Rapid Clamp™
- Resi-Ply™
- ShorFast™
- Space-Lift™
- Steel-Ply®
- Street Smart™
- Sym-Ply®
- Symons Soldier
- Versiform®

 **DAYTON™**  
SUPERIOR

 **SYMONS®**  
BY DAYTON SUPERIOR



**Leadership**

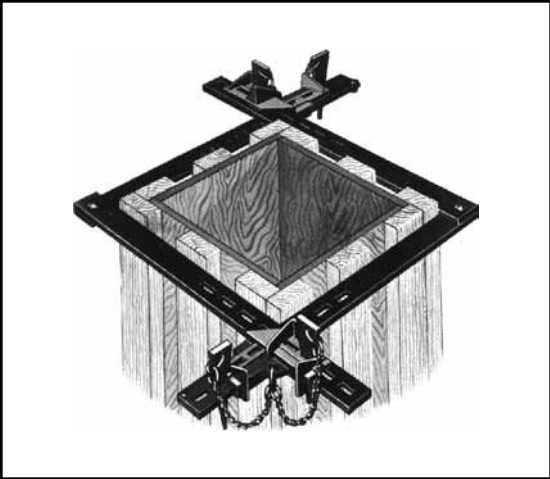
Since 1901, Symons has been a vital part of the construction industry and the leader in concrete forming. By providing the highest quality forming systems and the best forming solutions, contractors benefit from some of the most significant labor-savings available.

**Innovation**

The innovation that started with the invention of the column clamp has never stopped. Symons has developed hundreds of product improvements, always with the goal of forming concrete faster and easier. Because forming with job-built forms is so tedious and time-consuming, concrete contractors rely on these innovations for labor-savings in their forming operations.

**Productivity**

With labor-saving features designed into every forming system, contractors always have the best system and best solution for even the most challenging concrete forming projects. These Symons forming systems often pay for themselves in a matter of months, yet provide productivity and savings for years.



Adjustable Columns .....	4
Aluminum Beam Gang .....	5
DeckFast™ .....	6
Flex-Form® .....	7
Form Liner .....	8
FormRight™ .....	9
FrameFast™ .....	10
Garage Beam .....	11
Max-A-Form® .....	12
Median Barrier and Parapet .....	13
One-Sided Forming .....	14
Rapid Clamp™ .....	15
Resi-Ply™ .....	16
ShorFast™ .....	17
Space-Lift™ .....	18
Steel-Ply® .....	19
Street Smart™ .....	20
Sym-Ply™ .....	21
Symons Soldier .....	22
Versiform® .....	23

# Adjustable Columns

---



**Form almost any civil or commercial concrete column with this adjustable, all-steel form system.**

The Adjustable Column concrete forming system is designed for square and rectangular columns up to 48" wide. Forming a variety of column dimensions using identical panels minimizes equipment, provides versatility and improves productivity.

### **Heavy-Duty design**

The strong  $\frac{3}{16}$ " steel-faced system is built to stand up to the daily punishment of any commercial forming project. A design rating of 2000 pounds per square foot means faster pour rates and quicker changes .



### **Column versatility**

An extraordinary 295 column configurations are possible with 24", 36" and 48" widths and 1', 2', 4', 8' and 12' heights. The ability to form 10" to 48" square columns with a minimum of panels is a real equipment savings. Add the versatility to form rectangular configurations in 1" and 2" increments, and you have a truly efficient column forming system.

### **Excellent finish**

Unlike other column systems, Symons uses  $\frac{3}{16}$ " steel plate for the forming surface. The heavier plate allows faster pour rates with less deflection, and produces a consistently excellent concrete finish. With no internal ties, flush-fit hole plugs, and the built-in  $\frac{3}{4}$ " chamfer, finishing operations are reduced significantly.



# Aluminum Beam Gang

## **A strong, lightweight concrete forming system for repetitive gangform applications.**

### **Lightweight design**

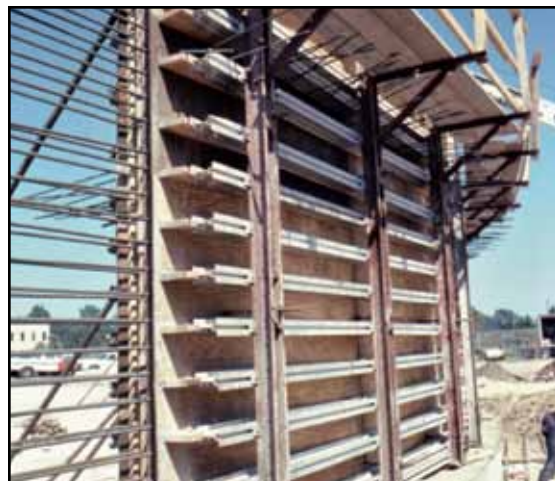
Symons Aluminum Beam Gang offers an extremely high strength-to-weight forming system. The unique beam attachment clips, sturdy aluminum beams and steel walers combine to create a rigid, compact, and lightweight gangform system. The system is easy for crews to assemble, position and align.

### **Application versatility**

The Aluminum Beam Gang system can be used for virtually any concrete forming application. Unlike competitive aluminum gang form products that may suffice for simple straight walls, you can form corners, pilasters, core walls, curved walls, and other configurations with a complete line of accessories and transitions.

### **Easy transitions**

Transitions to other standard Symons forming systems make special forming conditions easy to complete. Contour-threaded hardware, available for use with the Aluminum Beam Gang, eliminates concrete buildup on important hardware items. These components are all designed to eliminate mishaps, reduce waste and maximize forming productivity.





## As simple as erecting two components to support a ready-to-pour deck surface!

### Slab form productivity

DeckFast is the most efficient flat slab formwork system available. Just two basic components means superior labor savings and forming productivity.

### Super-sized panels

The large DeckFast panel, 180cm x 180cm (nominal 6'x6'), accelerates set-up speed and overall labor savings of the system. The aluminum frame and high-capacity galvanized post shore with drop-pin, provides exceptional on-site productivity. Compared to the DeckFast system, conventional shoring methods seem antiquated.

### Lower plywood costs

The DeckFast panels are supplied with installed HDO plywood. You receive the benefits of an excellent finish and nearly eliminate post pour defects. Typical plywood costs for conventional decking and related disposal costs are virtually eliminated.

### Fewer accessories

The system features just a few accessories to eliminate those costly in-fill areas. Adjustable panels have built-in nailer strips to fill in odd dimensions.



## A flexible forming system designed for round concrete tanks and curved walls.

### All-steel design

The all-steel Flex-Form system gives you all the strength and versatility of integral 4" deep vertical stiffeners with  $\frac{3}{16}$ " steel skin plate in a rated 1000 psf system. Panels are available in 2', 3', 4', 5' and 6' widths, and 4', 8' and 12' lengths. The large number of sizes allows more forming flexibility. The right combination of panels mean fewer pieces, fewer panel joints and less labor to assemble.

### Pre-rolled ribs

Pre-rolled, factory-installed top and bottom steel ribs bolt to flexible panel sections to shape and hold the form to the radius. Panels always conform to the radius of the ribs — this design assures that you will get the correct radius every time. By installing a straight rib, you can even produce a straight form and wall when needed. Panels are shipped to the jobsite with factory-installed ribs so forming operations can begin almost immediately.

### Excellent finish

Because the steel skin plate flexes to form the desired arc, there's no "chording" appearance in the poured concrete surface. Conventional panel systems produce form joint marks that require grinding and rubbing, while the Flex-Form system produces smooth concrete surfaces that require practically no finishing.



# Form Liner

---



## Enhance concrete appearance with form liner textures in four optional materials.

Architectural concrete can save time, labor and materials by providing both the structure and finished appearance. This combination speeds the entire construction process and minimizes costs.

Symons provides the widest selection of form liners in the concrete construction industry. Choose from hundreds of patterns, in four different liner materials, to create an attractive concrete appearance.



### **SPS plastic**

A polystyrene form liner that provides contractors with an inexpensive alternative for single-use applications.

### **ABS plastic**

An ABS form liner that provides durability and performance suitable for projects requiring material with 5-10 reuses.

### **Dura-Tex® Lite urethane**

A medium-range, 40 reuse, urethane liner material that can reproduce complex designs and patterns.

### **Elasto-Tex® urethane**

A pure urethane form liner that provides an exceptional cost advantage for projects with 100 or more reuses.



### **Archi-Foam**

An EPS foam product in a wide variety of custom sizes, shapes and patterns for boxouts. A coating can be applied to provide multiple reuses.

## The modular FormRight design is suitable for both gangform and handset applications.

### Modular versatility

Panels come in 27 sizes and can be combined vertically or horizontally to create almost any wall dimension. Simple accessories and hardware makes configuring gangs and setting details quick.

FormRight Rapid Clamps eliminate the need for walers, even when moving large gangs. Other clamps make connections for corners and common details as fast and easy as standard panel connections.

### System durability

FormRight panels are manufactured with steel frames. The form face is a 14 mm (nominal ½") plywood with a phenolic resin overlay on both sides to provide a high quality concrete finish and extended panel life.

Panels, clamps and ties create a strong system designed for 1250 psf (60 kN/m<sup>2</sup>) of concrete pressure.

### Panel sizes

Standard FormRight panels come in heights from 300 cm to 150 cm (9'-10" to 4'-11" nominal) and widths from 90 cm to 30 cm (36" to 12"). There is even a large 240 cm wide and 270 cm high (7'-10" x 8'-10") size panel option to further boost gangform productivity!





## Shoring and deck support systems for strength and application versatility.

### Aluminum beams and joists

The 7¼" beams and 6½" joists combine light weight, high strength, and cost-saving design features for joist and stringer applications. Aluminum Beams and Joists are available in standard lengths and incorporate wide flanges for stability.

### Shoring frames

For exceptional strength and durability, all Symons shoring frames are constructed of welded structural steel tubing. A typical load capacity is 12,000 lbs./leg (2.5:1 safety factor) up to three tiers high. Six FrameFast sizes are available in 4', 5' and 6' heights and 2' and 4' widths.



### Post shores

Heavy duty post shores, in three models, provide adjustable shoring heights from 5'-7" to 16'-0". Each of these Post Shores has a load rating up to 10,000 lbs. (3:1 safety factor). With this higher load rating, Post Shores can often be spaced further apart, reducing equipment needs and providing labor-savings.



## A complete system for the poured-in-place beam and slab parking garages.

The Garage Beam System is a comprehensive design and equipment plan for post-tensioned concrete beam and slab parking structures. The system consists of long beam form assemblies, high-capacity leg supports, column and capital forms, and reusable deck panels. All Garage Beam components are handled and moved with forklifts and dollies for maximum forming productivity.

### Beam forms

The beam forms feature long (up to 60') assemblies faced with  $\frac{3}{16}$ " steel skin plate for strength, durability and excellent concrete finish. Shoring frames are integral to the beam design, so no tie system or added beam bracing is required.

### Capital forms

All-steel capital forms are designed for typical exterior and "pass-through" interior locations. Forms are steel-faced for smooth concrete finish and include steel chamfer. Provisions for post-tension cable penetrations are also included in the capital form design.

### Deck panels

Deck panels are field-fabricated using wood "I" joists and HDO plywood that allow spans up to 22'-0" without center shoring. The reusable deck panels produce a consistently smooth concrete finish and provide maximum reuse.





## The labor-saving benefits of modular forms with the strength of an all-steel design.

### Panel design

Max-A-Form panels are constructed with a  $\frac{3}{16}$ " steel face plate and heavy duty crossmembers to support higher pour rates. Panels up to 8' wide by 20' long are rated at 1500 psf; 9' and 10' wide panels are rated at 1200 psf and 12' wide panels are rated at 1000 psf. The rigidity of these panels virtually eliminates the need for waler or strongback requirements and reduces the number of ties required.



### Panel sizes

Panels are available in more than 100 sizes, from 2' wide by 1' long to 10' wide by 20' long. The number of sizes provides more options when designing gangs, columns and pier caps. The large size means fewer pieces, fewer panel joints, fewer ties and less assembly labor.

### Labor-saving

The Max-A-Form forming system is ideal for gang forming heavy structural walls and columns where repetition, multiple lifts and a smooth finish are required. The structurally welded frame and steel face also can support concrete loads over long spans without the need for shoring.



# Median Barrier and Parapet

## Cast-in-place, inverted or precast forms for median barriers or parapets.

### Symons cast-in-place design

Symons cast-in-place Median Barrier and Parapet forms are designed to conform to the standard 32" high "Jersey style" contour.

Available in 5' or 10' standard lengths, these all-steel units can be furnished as an assembly or in component parts, depending on your specific requirements.

Adjustable top ties for standard forming operations or an adjustable yoke with tieless design and single-unit-stripping, have a range of top widths from 6" to 14" in 1" increments, providing versatility for almost every median barrier project.

### Inverted design

Symons also provides Median Barrier forms for conventional inverted casting or very productive rollover casting. The all-steel design withstands the demands of repetitive casting operations, producing a smooth and accurate shape every time.

Standard flat bulkheads are available for conventional inverted casting, while an adjustable trunnion bulkhead is utilized for more productive rollover operations.

### Precast design

Precast barrier forms conform to the standard 32" high "Jersey style" contour and are available in standard 10' or 12' lengths. Units may be bolted together to create even longer barriers and lateral span rails may be added to support blockouts.

Whether your application is standard or special, Symons can furnish a system suited to your precast concrete operations.



# One-Sided Forming



**Tight site conditions often require one-sided forming support frames.**

### **Wall Forming Frame Option**

The Backbone frame is strong, flexible and allows concrete pressure up to 60 kN/m<sup>2</sup> (1,250psf). The distance between Support Frames is determined by the height of the wall and the anticipated concrete pressure. The form is plumbed using jacks at the base.

The Backbone Support Frames transfer forces through the anchors embedded in the concrete at the foot of the frame and through rear pressure jacks on the bracket.



### **Versiform® Waler Option**

These one-sided wall forming components are designed to fit the 5" or 8" Versiform® walers used with most Symons forming systems. However, some of the systems require the use of a sill (1½") to position and connect walers to formwork as an assembly.

If the waler assembly and the forms are lifted separately, a waler connection (positive connection) is not necessary.



### **Symons Soldier Option**

Symons standard form systems, such as Steel-Ply®, Alispoly™, Rapid Clamp™, Sym-Ply™, Versiform or Max-A-Form®, can be combined with Symons Soldiers to create a tieless concrete forming scheme for one-sided wall forming, offering substantial savings in time and labor costs.

Hardware and accessories, including One-Sided Brackets and Jack Brackets, simplify assembly and adjustments for one-sided wall forming applications.

## **A quickly configured system for fast-paced concrete gangforming even with changing dimensions.**

This metric dimension, modular forming system consists of a steel frame and a specially coated 15 mm (5/8") plywood face. It provides the strength, durability, versatility and concrete finish needed for most gangforming applications.

### **Panels and fillers**

Available in a variety of widths from 25 cm to 200 cm, and heights of 1 meter or 3 meters, this wide range of panel and filler sizes means you'll be able to form almost any wall dimension. When combined with corners and accessories, even pilasters, bulkheads and columns can be formed with standard equipment.

### **Horizontal or vertical**

Rapid Clamp forms can be used horizontally or vertically, even within the same gang, without compromising strength. This forming system has the strength required for the large contact areas and fast pour rates common in large foundations. With a design pressure of 6000 kg/m<sup>2</sup> (1250 psf), only two ties are needed for 3 meter panel heights.

### **Simple connections**

The Rapid Clamp concrete forming system features simple clamp connections that eliminate the need for tools and alignment bars. Setting up or changing the configuration of gangs is fast and simple with these innovative attachment clamps, reducing assembly confusion, increasing productivity and simplifying gangforming operations.



# Resi-Ply



## The economical 1 $\frac{1}{8}$ " plywood system alternative to typical job-built forms.

### Residential forming

The Resi-Ply forming system is designed for residential foundations and low industrial concrete walls. It can be assembled quickly using attached hardware that secures the ties and subsequent form in a single operation. Waler brackets slide over hex head bolts on the back of the form to hold standard lumber and bring the formwork into alignment.

### Interchangeable design

Resi-Ply panels, fillers, corners and ties are generally interchangeable with other commonly available 1 $\frac{1}{8}$ " plywood forming systems. There is no need to obsolete your current equipment in order to switch to the Resi-Ply forming system.

### Forming productivity

The durable, 1 $\frac{1}{8}$ " HDO plywood face conforms to PS 1-09 for strength and quality. The attached locking hardware eliminates the extra costs associated with lost parts and speeds setting. A variety of form heights from 2' to 10' with 4-bar, 5-bar and 6-bar configurations provide versatility and compatibility. The relatively flat panel design takes up less space on the truck and leaves more room to transport other materials.



## Lightweight legs, jacks and frames provide high-strength shoring support.

### Leg assembly

The leg assembly is extruded with four large keyways for the frame attachment and provides a positive rigid connection. The top and bottom plates are aluminum castings that can be bolted together with a larger center hole to accept the jack.

Size		Weight	
m	ft-in	kg	lbs
0.5	1'-7"	4.0	8.8
1.5	4'-11"	10.0	22.0
2.0	6'-6"	13.0	28.6
2.5	8'-2"	17.0	37.4
4.0	13'-2"	26.0	57.2

### Jack assembly

The jack collar has a self-cleaning thread that allows smooth adjustment to the required height. The base casting has location holes to connect Trigger Braces to the ShorFast Frames when needed.

Size		Weight		Range
m	in	kg	lbs	in
1.1	43"	8.0	17.6	5"-32"
1.6	63"	11.7	25.7	7"-52"

### Frame design

The three frame sizes are extruded with a location key that fits neatly into the leg providing a rigid and secure connection. They are attached to the leg using four "T" bolts and hand tightened with a large cast collar. The top strut is a special-shape extrusion to support the access walks and edge beams.

Size		Weight	
m	ft-in	kg	lbs
1.0	3'-3"	9.0	19.8
2.0	6'-7"	13.0	28.6
3.0	9'-10"	15.5	34.1





## Productive jump form system for structures with core walls and shear walls.

The Space-Lift™ system is a fully-engineered jump form system intended for concrete shear wall applications. The system consists of frame components and a carriage assembly that supports the forming equipment and crew.

The Space-Lift assembly is suspended from Jump shoes that are bolted to inserts in the concrete wall. The entire assembly remains anchored to the wall during the forming operation. Work platforms provide safe access during setting, placing, stripping and finishing activities. Rollback carriages allow the gang form to be retracted from the wall without being removed. All these activities, of course, proceed without using valuable crane time.

### Highlights

- ◆ Standard Space-Lift frame heights of up to 16' for higher walls in lobby and atrium areas
- ◆ Space-Lift frame spacing up to 10' o.c. adapts to structure and gang form requirements
- ◆ Rollback form access ranges from 35" with Steel-Ply to 29" with Aluminum Beam Gangs
- ◆ Trailing platform makes operations such as removing Jump Shoes, patching and welding easy and safe
- ◆ The unique Curved Wall Bracket provides angled adjustment for Space-Lift frames on tank applications with a minimum 11' radius.
- ◆ Work platform provides ample room for crews to set, strip and clean forms

## The most productive, pre-engineered, factory-built, reusable concrete forming system in use today.

The Steel-Ply forming system may be used in handset or gang form applications, for commercial or residential structures, to form walls of almost any shape or size.

### Forming productivity

The Steel-Ply system is more productive and economical than job-built lumber and plywood formwork. No measuring, sawing, drilling, or nailing is required. Minimal training is needed, so workers are quickly up to maximum efficiency with only a hammer needed for setup and stripping.

### Application flexibility

Unlike job-built formwork, which must be tailored for each specific pour, the Steel-Ply forming system comes in a variety of standard sizes which can be combined to form virtually any dimension. Steel-Ply panels and fillers are made of specially laminated plywood mounted to rugged steel frames. With proper care, Steel-Ply forms can be used up to 200 times before being reconditioned.

### Consistent results

No matter what the forming application, the same basic components and methods are used. Labor performance becomes consistent and predictable, saving time and money on concrete forming operations.





## Reusable steel forms for residential curbing, industrial slabs and commercial paving.

### Versatile use

The Street Smart Forming System is ideally suited for applications that include sidewalks, driveways, curb and gutters, pavements, footings and industrial slabs. Standard forms are available in 10' lengths, with heights ranging from 4" to 24", for almost any straight edge forming condition.

### Durable design

This forming system features durable steel components, with added reinforcement, for maximum service life. These components are precision welded to provide a system that lasts far longer than conventional lumber edge forms. Each form has reinforced stake pockets on the back for the 3/4" Steel Stakes that position and support the form during concrete placement.

### Reduced cost

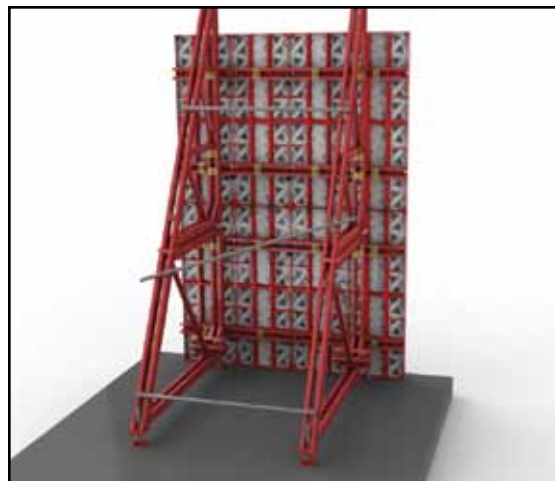
The productivity advantages of this equipment are obvious. The system adapts to different project conditions, reducing applied forming costs. A crew sets the system quickly and consistently, reducing related labor costs. The steel design eliminates lumber replacement costs, maximizing system reuse.



**Symons all new Sym-Ply concrete forming system has been designed and manufactured to the demanding requirements of today's construction projects.**

**Features**

- 1,500psf allowable pressure
- 80ksi steel for strength and durability
- Pins directly to Steel-Ply panels, fillers, corners, hinges and pilaster forms
- Built-in Tie-Off Bars meet OSHA requirements for fall protection
- Only 8 pounds per square foot
- 5/8" 100/30 HDO standard plywood face
- Profiled side rail allows pry bar access for adjusting gangs to the chalk line
- Clamp or bolt together for maximum versatility
- 17/16" diameter tie hole accommodates 50kip or 15mm taper ties and she-bolts
- Plywood protector sleeve plate is buttressed by the tie box for extended sleeve life
- Up to 10 degree batter with 50K ties
- Only 4" deep means more forms per truck
- Manufactured in the U.S.A.
- Manufactured by union workers
- Manufactured by Symons



# Symons Soldier

---



## A versatile steel construction beam system for forming and shoring applications.

### Multiple use

A unique hole pattern makes the Symons Soldier adaptable to virtually any concrete forming or shoring application. When combined with the standard hardware and accessories, the Symons Soldier can be configured as a shore, brace, strongback, waler, truss or one of many other typical concrete forming system components.

### Design strength

Soldiers are fabricated with high-strength steel to provide high load capability, yet they are surprisingly lightweight, resulting in reduced crane capacity requirements. End plates are built square to the beam, enabling full moment connection with four  $\frac{3}{4}$ " Speed Bolts and Nuts. By bolting end-to-end as a continuous beam, the connection develops the full design strength.

### Simple connections

The ability to quickly bolt to the flanges on any side adds to the efficiency of the Soldier. This feature allows the Soldier system to complement other standard Symons concrete forming systems for special applications.



## A steel frame, ¾" plywood face gang system for commercial construction.

Versiform gangs with high-capacity ties make concrete forming extremely productive. Large crane-handled gangs minimize forming labor costs and provide an excellent concrete finish.

### System durability

This standard modular system, consisting of an all-steel frame and ¾" thick high density overlay (HDO) plywood face, provides the durability and reusability needed when high production gang forming is required. The Versiform system is ideal for forming wastewater treatment plants, bridges, piers and large commercial concrete structures.

### Forming details

Versiform isn't just for wall forming either. Complemented by an extensive line of accessories, this system can improve overall forming productivity. The wide range of panel sizes and accessories means that you'll be able to form pilasters, bulkheads, core walls, "Y" walls or battered walls easily. These complex forming details are typically overlooked by other gang systems.

### Panel strength

The Versiform forming system is manufactured with a consistent strength factor for job site safety. The panel design combines 3" channel crossmembers, special HDO plywood, integral bracing, and load-bearing intercostals to provide the strength required for large contact areas.





**REBAR SUPPORTS**

- Concrete Dobies
- Continuous Plastic and Steel Bar Supports
- Individual Plastic and Steel Bar Supports
- Mesh Chairs
- Paving Chairs
- Side Form Spacers

**PRODUCTS FOR BRIDGE DECK FORMING**

- Adjustable Joist Hangers
- Bridge Overhang Brackets
- Haunch and Fillet Forming
- Pres-Steel, Coil Rod and Con-Beam Hangers
- Screed Supports

**CHEMICAL PRODUCTS**

- Bond Breakers
- Cleaners / Strippers
- Concrete Repair/Restoration
- Curing Compounds / Sealers
- Epoxies
- Floor Levelers
- Form Release Agents
- Grout
- Hardeners / Industrial Toppings
- Liquid Densifiers
- Surface Retarders

**FORMING & SHORING PRODUCTS**

- Aluminum Shoring
- Ganged Formwork
- Garage Beam System
- Handset Formwork
- Highway Forms
- Jump Forms
- Modular Deck Shoring
- One Sided Frames
- Self Spanning Forms
- Steel Frame Shoring

**CONCRETE PAVING PRODUCTS**

- Dowel Bar Expansion Caps
- Dowel Bar Retrofit System
- Elastomeric and Hot Pour Joint Seal
- Metal Keyway Form Systems
- Tie Bar Assemblies
- Transverse Bar Assemblies
- Welded Dowel Assemblies
- Wire Baskets w/o Dowels

**PRODUCTS FOR PRECAST CONSTRUCTION**

- Anchors & Lift Systems
- Coil / Ferrule Inserts
- Core Plugs
- Magnets
- Precast Forms
- Rustications/Chamfers
- Sandwich Panel Connector
- Shear Connectors
- Slotted Inserts

**FORMLINER PRODUCTS**

- ABS Plastic
- Polystyrene Plastic
- Precision Cut Foam
- Solid Urethane
- Urethane-Skinned Foam

**GEOTECHNICAL PRODUCTS**

- Ground Anchors
- Wind Turbine Foundation Anchors

**REBAR SPLICING PRODUCTS**

- Forged Dowel Bar Couplers
- Lockshear Bolt Couplers
- Shear Resistance Products
- Straight Thread Couplers
- Taper Thread Couplers

**TIES AND ACCESSORIES**

- Modular Form Ties
- Single Waler System
- Ties and Accessories

**PRODUCTS FOR TILT-UP CONSTRUCTION**

- Braces and Brace Anchors
- Helical Ground Anchors
- Setting Plugs
- Strongback System
- Tilt-Up Anchors & Lifting Systems

**DAYTON SUPERIOR BRANDS**

**CONCRETE ACCESSORIES**

- Accubrace®
- Aztec®
- Bar Lock®
- Corewall®
- Fleet-Lift™
- Swift Lift®
- Taper-Lock®

**CONSTRUCTION CHEMICALS**

- Conspec®
- Earth Friendly®
- Edoco®
- Unitex®

**FORMING PRODUCTS**

- Max-A-Form®
- Steel-Ply®
- Sym-Ply®
- Symons®

**DAYTON SUPERIOR  
CORPORATE HEADQUARTERS**  
1125 Byers Road  
Miamisburg, OH 45342  
937-866-0711

**ACCESSORIES AND CHEMICALS  
CUSTOMER SERVICE  
TECHNICAL ASSISTANCE**  
888-977-9600

**FORMING PRODUCTS  
CUSTOMER SERVICE  
TECHNICAL ASSISTANCE**  
800-800-SYMONS



With products proudly made in America and a wide breadth of recognized brands, Dayton Superior is the most comprehensive, single-source provider for all your concrete construction needs.